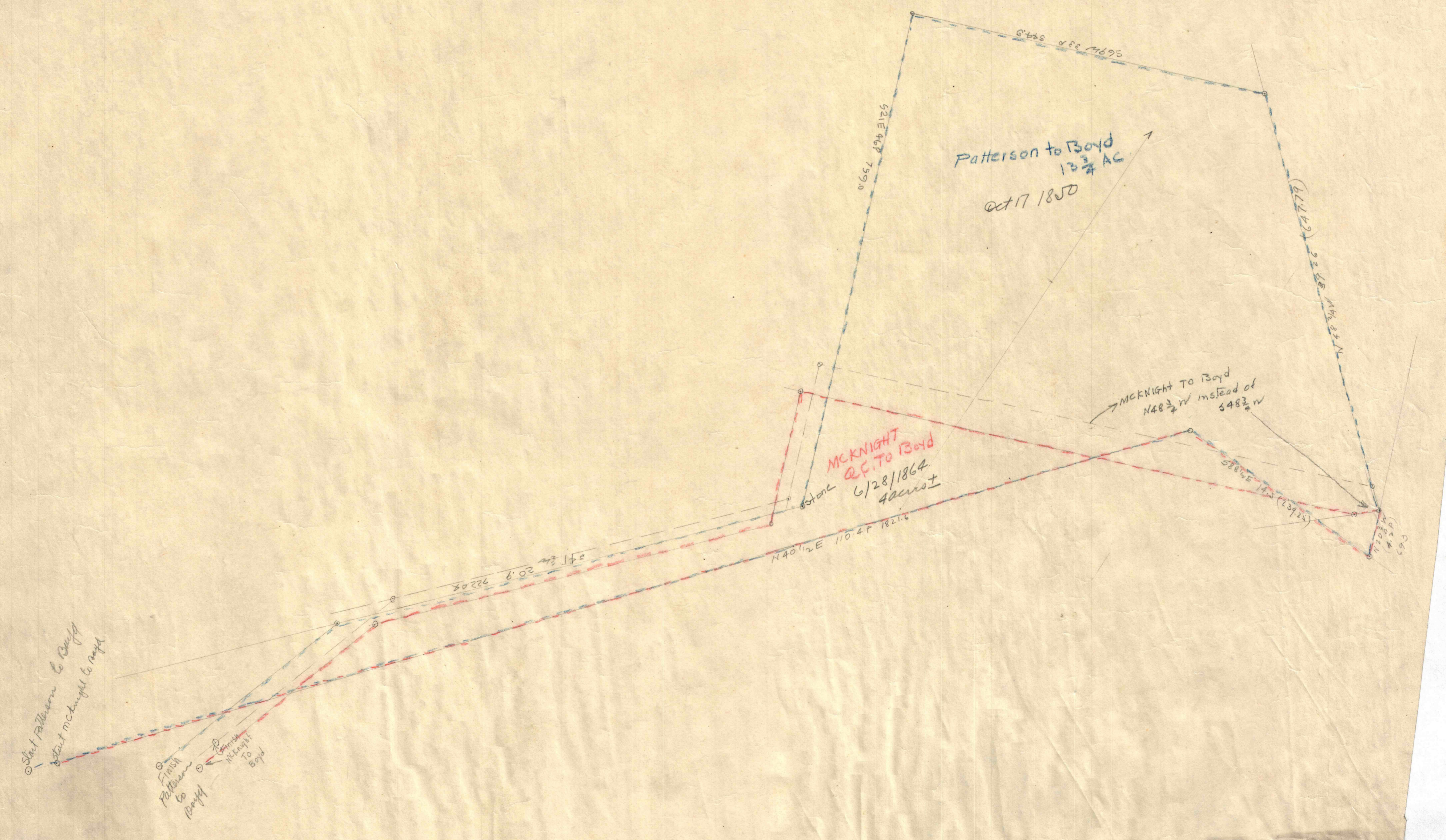


Start Patterson to Boyd
Start McKnight to Boyd

Finish
Patterson
to
Boyd
Finish
McKnight
to
Boyd



Patterson to Boyd
13 1/2 AC
Oct 17 1850

MCKNIGHT
TO Boyd
Q.C. TO 1864
40 AC

MCKNIGHT TO Boyd
N 48 3/4 W instead of
S 48 3/4 W

S 21 E 40 P 759.0

N 40 1/2 E 110.4 P 182.6

S 88 1/2 E 142 (239.2)

(177.9) S 22 1/2 E 416.3 P N

(172.4) S 45 1/2 E 120.0 P

S 41 3/4 E 20.9 P 222.08

S 55 1/2 E 119.0