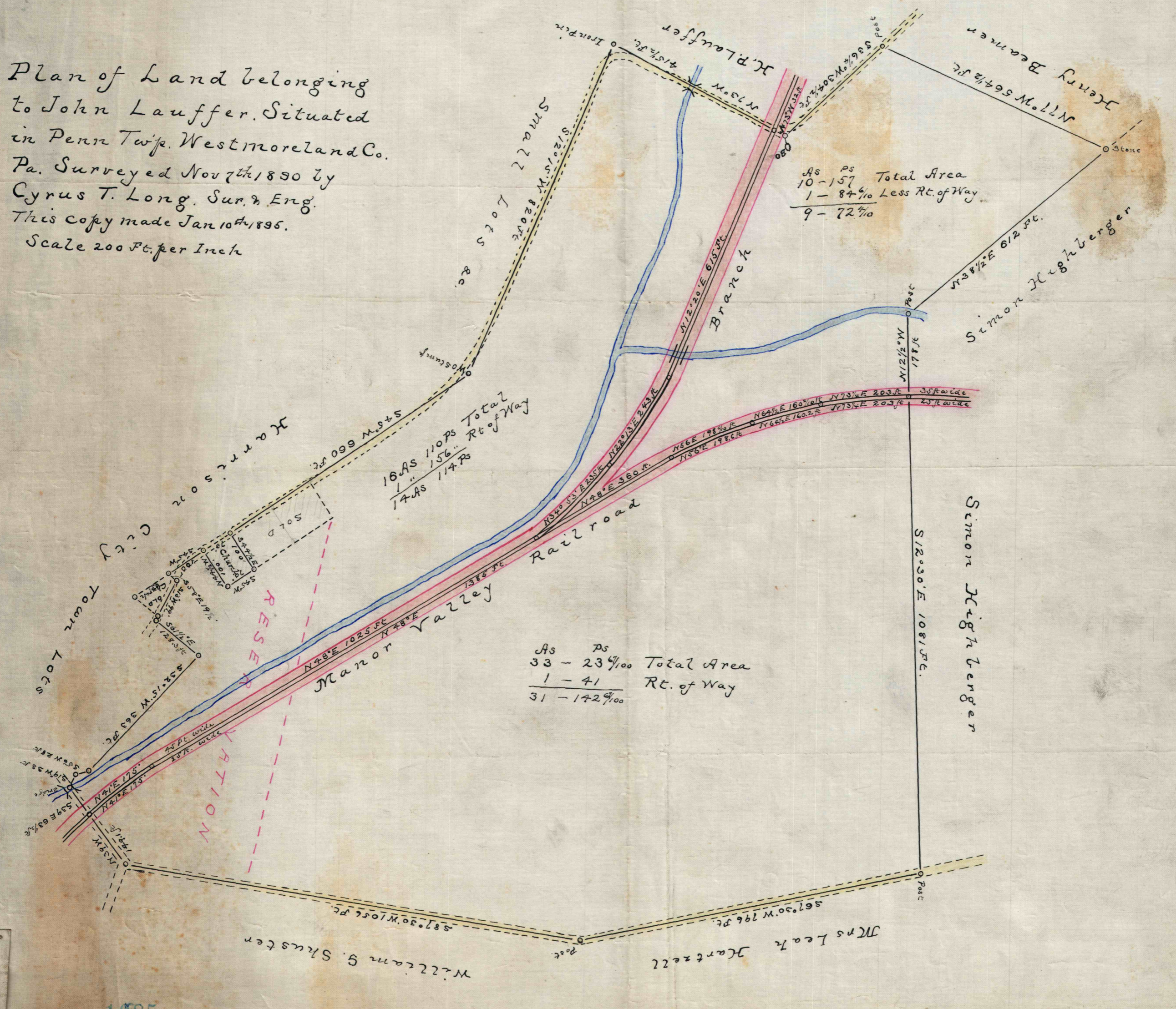


Plan of Land belonging
 to John Lauffer. Situated
 in Penn Twip. Westmoreland Co.
 Pa. Surveyed Nov 7th 1830 by
 Cyrus T. Long. Sur. & Eng.
 This copy made Jan 10th 1895.
 Scale 200 Ft. per Inch



As	As	Total Area
10	157	
1	-	84% Less Rt. of Way
9	-	72%

As	As	Total Area
33	-	23% ¹⁰⁰
1	-	41
31	-	142% ¹⁰⁰