

3127

RECORDED  
WESTMORELAND COUNTY  
APR 14 1948  
JESSIE S. McCORMICK  
RECORDER  
FEE 3.00 PAID



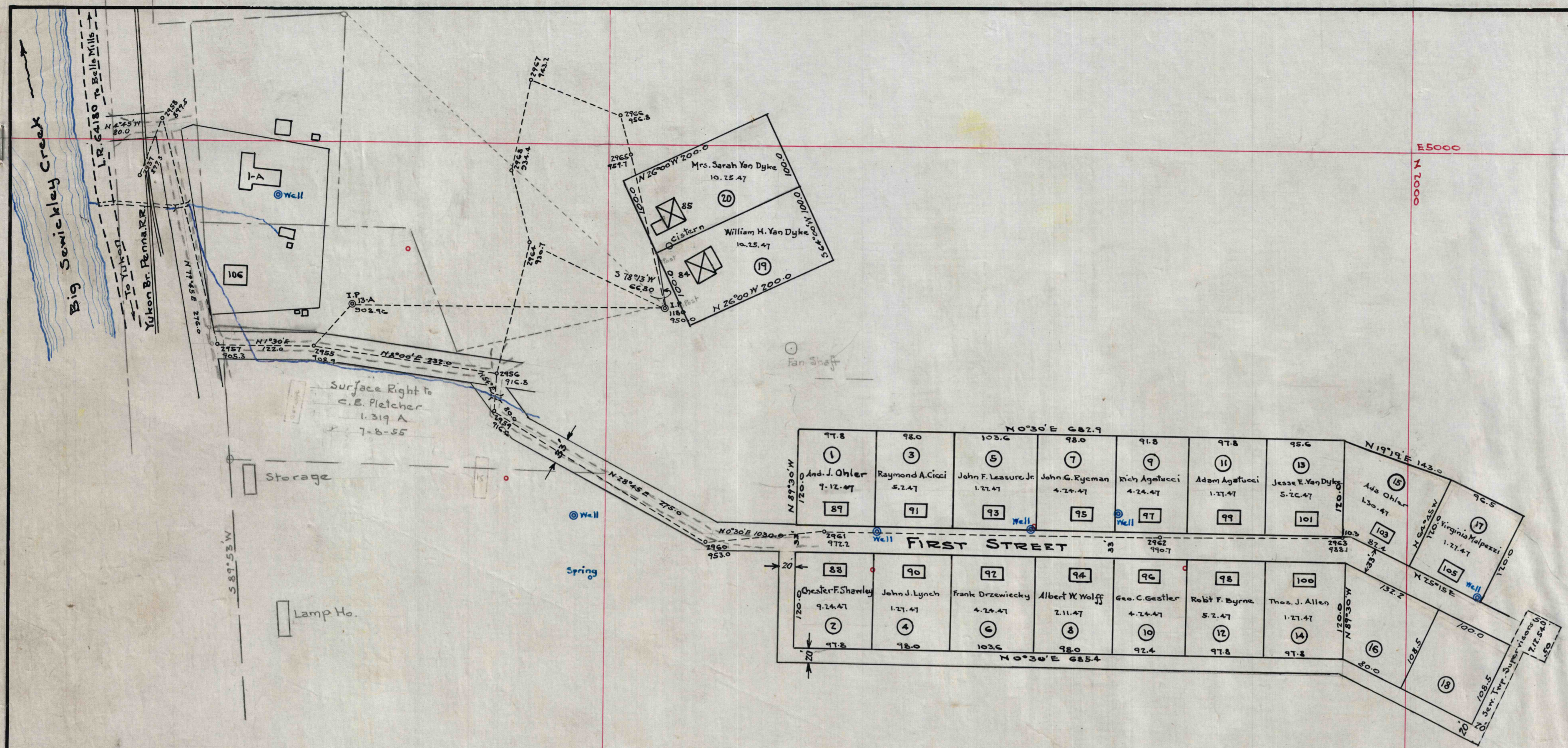
Commonwealth of Pennsylvania  
County of Westmoreland  
Recorded this 14<sup>th</sup> day of APRIL  
A. D. 1948 in the Recorder's Office of  
said County in Book Vol. 6 Page 225  
Given under my hand and seal of the said office  
the day and year aforesaid.  
Jessie S. McCormick Recorder



GREENAWALT PLAN OF LOTS  
of  
WESTMORELAND INCORPORATED  
IN  
Sewickley Township Westmoreland Co. Penna.

Scale 100' = 1"

Eng. Dept. Westmoreland Coal Co. Irwin Pa. 10-21-46



Approved April 8<sup>th</sup> 1948  
Board of Supervisors Sewickley Township  
WESTMORELAND COUNTY PENNA.

*William W. Shoaf*  
*Joseph P. Chittman*  
*Richard W. Stefanacci* Secretary  
*Steven W. Benuff*