

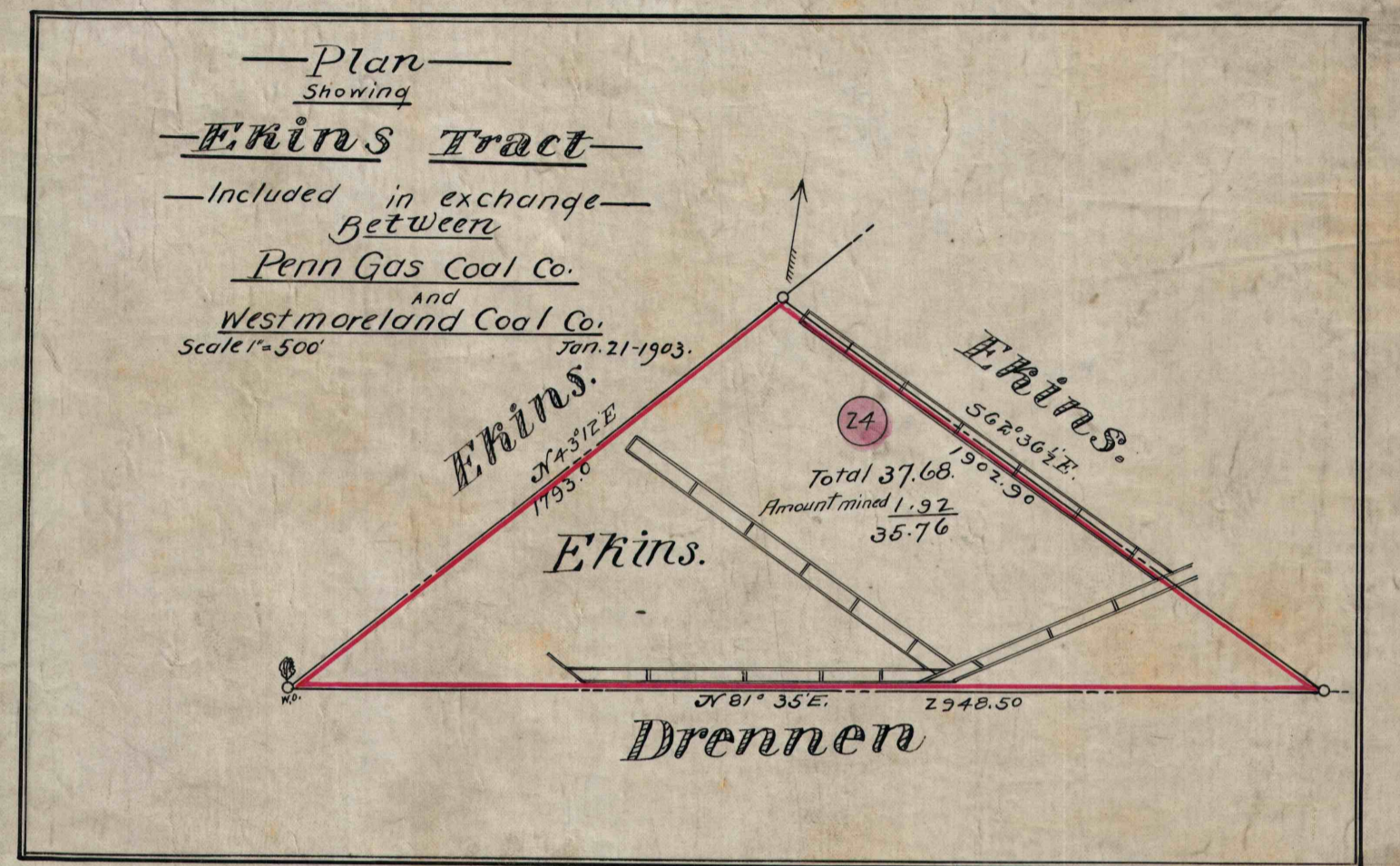
**PLAN**  
Showing  
**Exchange of Coal Properties**  
Between

**The Westmoreland Coal Co.**  
And  
**The Pennsylvania Mining Co.**  
And  
**The Penn Gas Coal Co.**

Sited in  
**North Huntingdon and Sewickley Twp. Westmoreland Co. Pa.**

Scale 1"=500'

Jan 21 1903



<b>Penna. Mining Co.</b> to <b>Penn Gas Coal Co.</b>	<b>Penna. Mining Co.</b> to <b>Westmoreland Coal Co.</b>
① Area = 0.27 Acres. ② " = 78.61 ③ " = 16.09 ④ " = 11.44 ⑤ " = 54.10 Total = 170.04	⑥ Area = 3.14 Acres. ⑦ " = 30.60 ⑧ " = 7.47 Total = 41.16
<b>Penn Gas Coal Co.</b> to <b>Penna. Mining Co.</b>	<b>Westmoreland Coal Co.</b> to <b>Penna. Mining Co.</b>
⑨ Area = 10.98 Acres. ⑩ " = 16.09 ⑪ " = 11.44 ⑫ " = 54.10 Total = 92.61	⑬ Area = 0.01 Acres. ⑭ " = 21.75 ⑮ " = 5.70 ⑯ " = 27.46 Total = 20.07

in exchange between P.M.Co. and P.G.Co.  
P.G.Co. gave to P.M.Co. 92.61 Ac.  
P.M.Co. gave to P.G.Co. 78.88 Ac.  
Amount P.G.Co. in excess 13.73 Ac.

between P.M.Co. to W.C.Co. 41.16 Ac.  
W.C.Co. to P.M.Co. 27.46 Ac.  
Amount W.C.Co. received in excess 13.70 Ac.

<b>Westmoreland Coal Co.</b> to <b>Penn Gas Coal Co.</b>	<b>Penn Gas Coal Co.</b> to <b>Westmoreland Coal Co.</b>
⑰ Area = 251.93 Acres ⑱ " = 72.04 ⑲ " = 1.24 ⑳ " = 11.01 Total = 336.22	㉑ Area = 53.87 Acres ㉒ " = 27.07 ㉓ " = 51.57 ㉔ " = 14.50 ㉕ " = 22.57 ㉖ " = 15.20 ㉗ " = 1.0198 ㉘ " = 35.76 Amount W.C.Co. received in excess = 13.70 Total = 336.12

**Surface**  
**Penn Gas Coal Co.**  
to  
**Westmoreland Coal Co.**

㉙ Area = 21.41 Acres. ㉚ " = 10.17 ㉛ " = 8.06 Total = 39.64 Reservation 2.00 37.64
--