

Map
of
Beswick Coal Exchange
between the
Penn Gas & Westmoreland Coal Co's
Near
Manor Pa

Scale 300'=1"

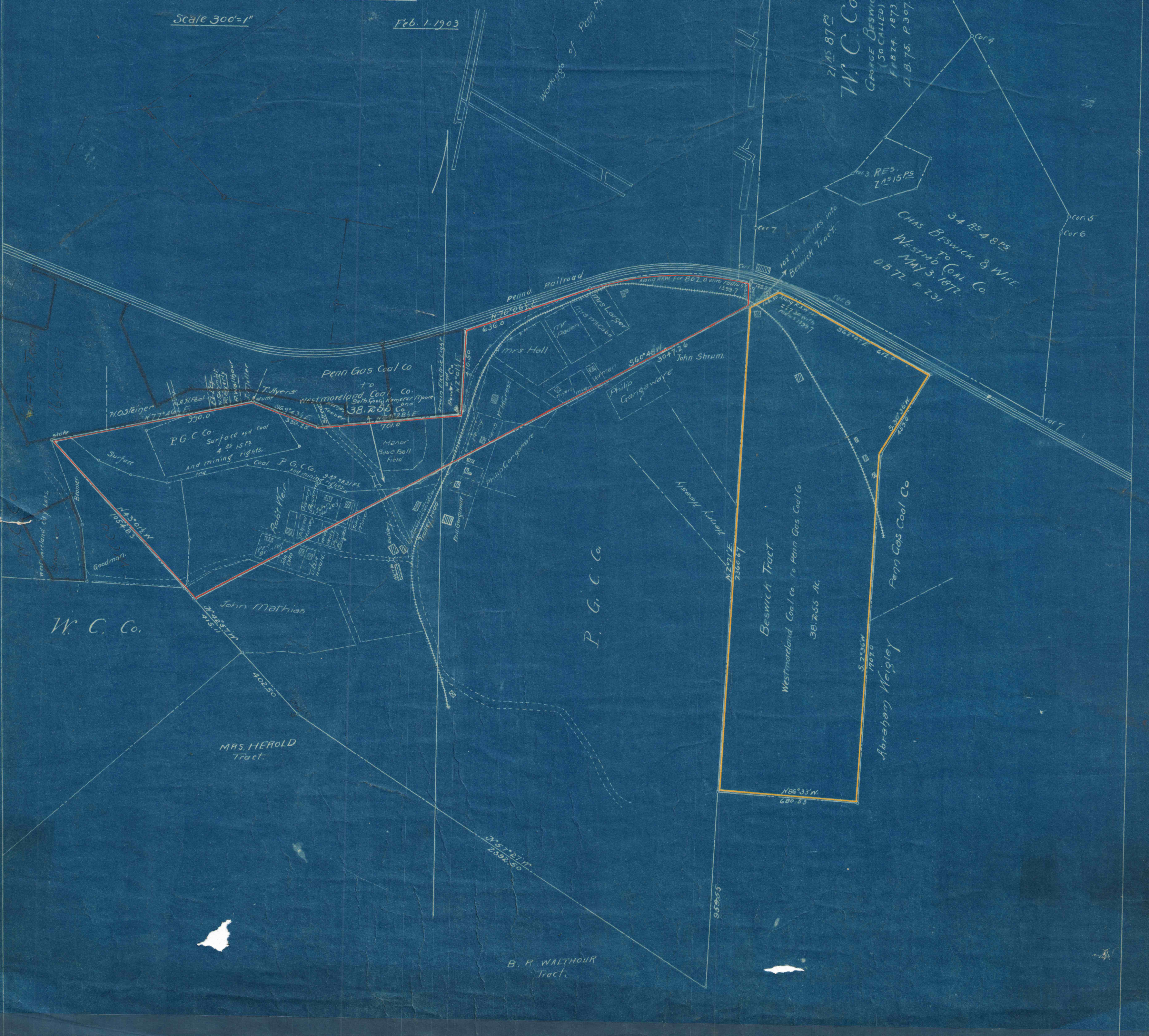
Feb. 1-1903

Workings of Penn Manor Shaft

W. C. Co.
GEORGE BESWICK
(SO CALLED)
F.B. 1873
D.B. 75. P. 307.

RES.
71515PS

34 854 875
CHAS BESWICK & WIFE
TO COAL CO.
MAY 3 1877.
D.B. 72. P. 231.



B. P. WALTHOUR
Tract.