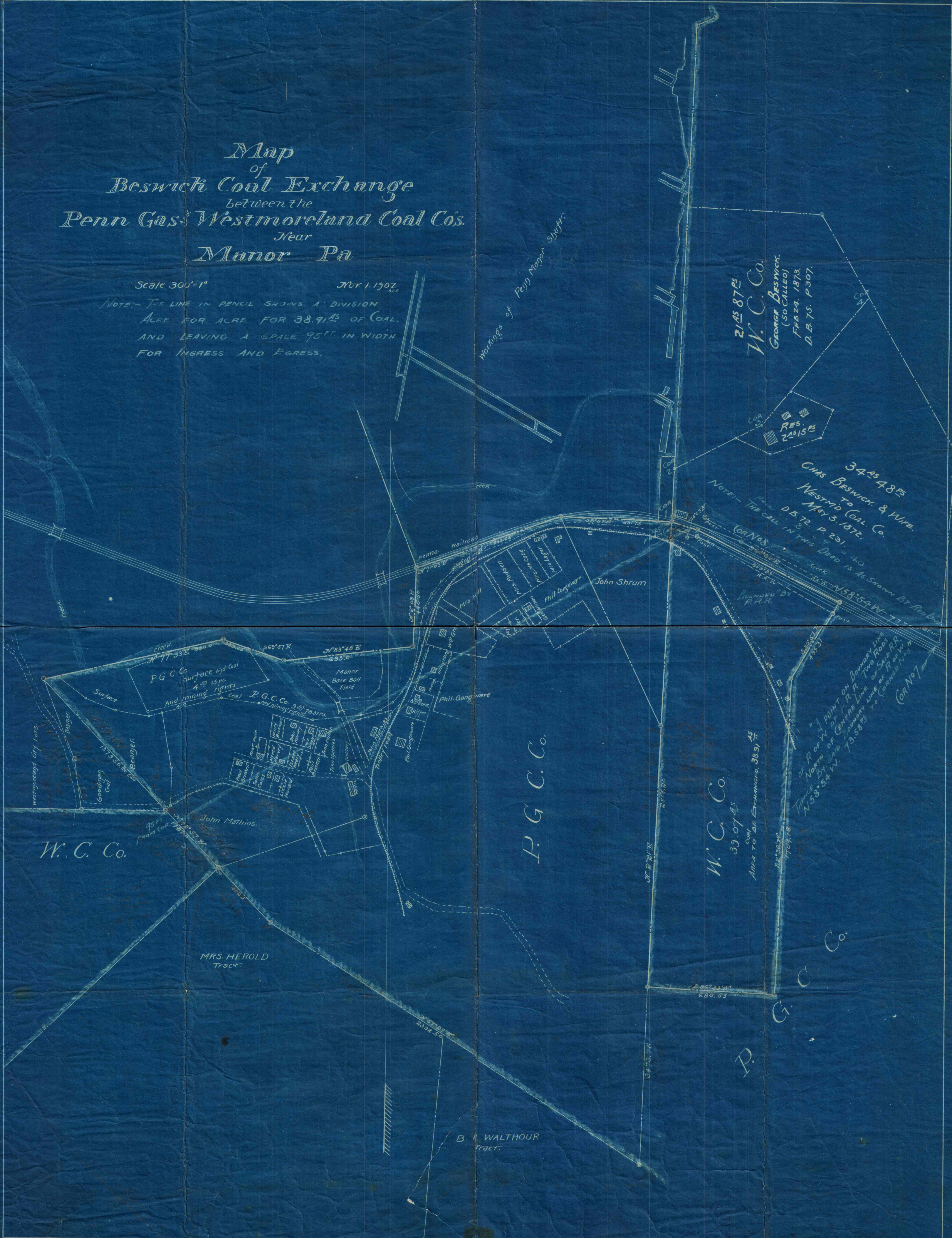


*Map
of
Beswick Coal Exchange
between the
Penn Gas & Westmoreland Coal Co's.
Near
Manor Pa*

Scale 300'=1"

Nov 1 1907

NOTE:— THE LINE IN PENCIL SHOWS A DIVISION
ACRE FOR ACRE FOR 38.91⁴⁵ OF COAL
AND LEAVING A SPACE 95'⁰⁰ IN WIDTH
FOR INGRESS AND EGRESS.



*21⁴⁵ 87⁴⁵
W.C. Co.
George Beswick
(SO CALLED)
FEB 24, 1873.
D.B. 75. P. 307.*

*RES.
24⁴⁵ 15⁴⁵*

*34⁴⁵ 48⁴⁵
CHAS BESWICK & WIFE
TO
WESTMD COAL CO.
MAY 3, 1872.
D.B. 72. P. 231.*

NOTE:— THE CALL IN THIS DEED IS AS SHOWN BY THE LINE
(COR No 8)

NOTE:— POINT ON RAILROAD LINE
NORTH OF CENTRE LINE OF SAID R.R.
THREE BY SAID LOWERY LINE OF SAID R.R.
N58° 54' W. 73.682' TO CORNER A13
(COR No 7)

W.C. Co.

P.G.C. Co.

*W.C. Co.
39,07⁴⁵
AREA TO BE EXCHANGED, 38.91⁴⁵*

*MRS. HEROLD
Tract.*

*B. A. WALTHOUR
Tract.*

Workings of Penn Major Shaft

John Shrum

John Mathias

Phil Goughware

Mrs Hill

Upper Run

Lower Run

Manor Base Ball Field

Manor

Manor

Manor

Manor

Manor

Manor

Manor

Manor

Manor

Manor

Westmoreland City Lots

Surface

*P.G.C. Co. Surface and Coal
And Mining rights
4⁴⁵ 15⁴⁵ ps.*

*P.G.C. Co. 9⁴⁵ 23⁴⁵ ps.
and mining rights*

Phil Goughware

Phil Goughware

Phil Goughware

Phil Goughware

Phil Goughware

Phil Goughware

Phil Goughware

Phil Goughware

Phil Goughware

Phil Goughware

Phil Goughware

Phil Goughware

Phil Goughware

Phil Goughware

Phil Goughware

Phil Goughware

Phil Goughware

Phil Goughware

Phil Goughware

Phil Goughware

Phil Goughware

Phil Goughware

Phil Goughware

Phil Goughware

Phil Goughware

Phil Goughware

Phil Goughware

Phil Goughware

Phil Goughware

Phil Goughware

Phil Goughware

Phil Goughware

Phil Goughware

Phil Goughware

Phil Goughware

Phil Goughware

Phil Goughware

Phil Goughware

Phil Goughware

Phil Goughware

Phil Goughware

Phil Goughware

Phil Goughware

Phil Goughware

Phil Goughware

Phil Goughware

Phil Goughware

Phil Goughware

Phil Goughware

Phil Goughware

Phil Goughware

Phil Goughware

Phil Goughware

Phil Goughware