

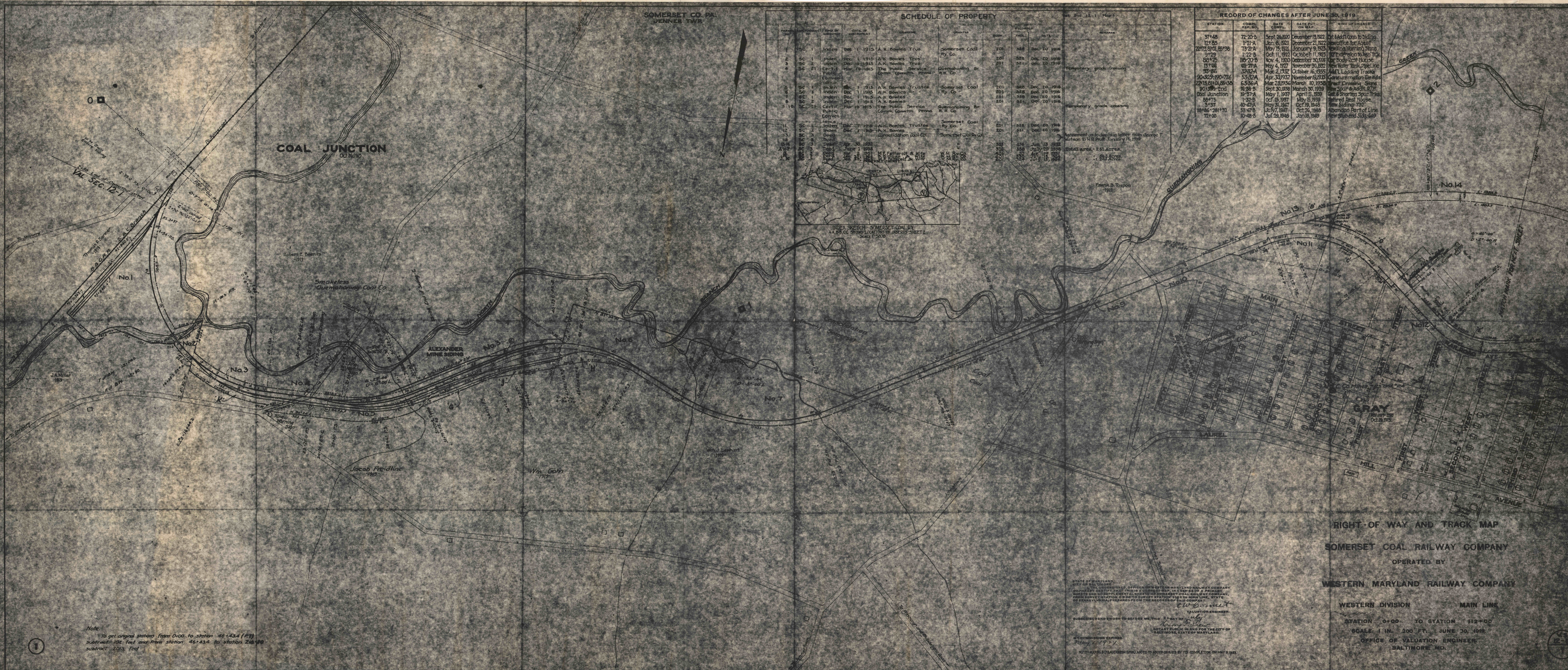
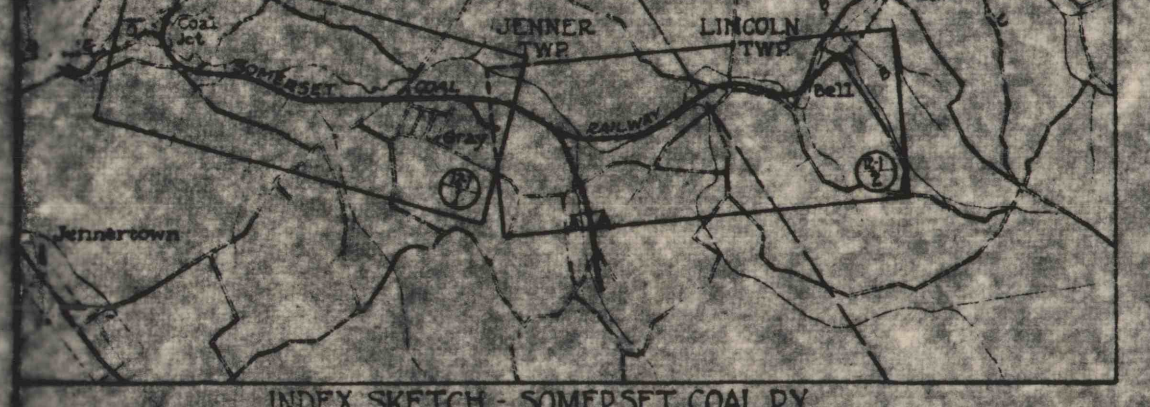
SOMERSET CO. PA.  
JENNEE TWP.

SCHEDULE OF PROPERTY

Station	Substation	Kind of Substation	Date of Interpretation	Owner	Quantity	Subst. No.	Acres	Remarks
1	SC 1	Indem	Dec 1 1915	A. K. Bowles Trus.	Somerset Coal Ry. Co.	Z01	388	Dec 20 1916
2	SC 2	Indem	Dec 1 1915	A. K. Bowles Trus.	Somerset Coal Ry. Co.	Z01	520	Dec 20 1916
3	SC 21	Public	Mar 19 1915	The Public Service Comm. Gen'ly. Penna.	Quemahoning Br. R. R. Co.	Z01	521	Dec 20 1916
4	SC 1	Indem	Dec 1 1915	A. K. Bowles Trus.	Somerset Coal Ry. Co.	Z01	382	Dec 20 1916
5	SC 1	Indem	Dec 1 1915	A. K. Bowles Trus.	Somerset Coal Ry. Co.	Z01	520	Dec 20 1916
6	SC 2	Indem	Dec 1 1915	A. K. Bowles Trus.	Somerset Coal Ry. Co.	Z01	520	Dec 20 1916
7	SC 21	Public	Mar 19 1915	The Public Service Comm. Gen'ly. Penna.	Quemahoning Br. R. R. Co.	Z01	521	Dec 20 1916
8	SC 1	Indem	Dec 1 1915	A. K. Bowles Trus.	Somerset Coal Ry. Co.	Z01	521	Dec 20 1916
9	SC 2	Indem	Dec 1 1915	A. K. Bowles Trus.	Somerset Coal Ry. Co.	Z01	521	Dec 20 1916
10	SC 21	Public	Mar 19 1915	The Public Service Comm. Gen'ly. Penna.	Quemahoning Br. R. R. Co.	Z01	521	Dec 20 1916
11	SC 1	Indem	Dec 1 1915	A. K. Bowles Trus.	Somerset Coal Ry. Co.	Z01	521	Dec 20 1916
12	SC 2	Indem	Dec 1 1915	A. K. Bowles Trus.	Somerset Coal Ry. Co.	Z01	521	Dec 20 1916
13	SC 21	Public	Mar 19 1915	The Public Service Comm. Gen'ly. Penna.	Quemahoning Br. R. R. Co.	Z01	521	Dec 20 1916
14	SC 1	Indem	Dec 1 1915	A. K. Bowles Trus.	Somerset Coal Ry. Co.	Z01	521	Dec 20 1916
15	SC 2	Indem	Dec 1 1915	A. K. Bowles Trus.	Somerset Coal Ry. Co.	Z01	521	Dec 20 1916
16	SC 21	Public	Mar 19 1915	The Public Service Comm. Gen'ly. Penna.	Quemahoning Br. R. R. Co.	Z01	521	Dec 20 1916
17	SC 1	Indem	Dec 1 1915	A. K. Bowles Trus.	Somerset Coal Ry. Co.	Z01	521	Dec 20 1916
18	SC 2	Indem	Dec 1 1915	A. K. Bowles Trus.	Somerset Coal Ry. Co.	Z01	521	Dec 20 1916
19	SC 21	Public	Mar 19 1915	The Public Service Comm. Gen'ly. Penna.	Quemahoning Br. R. R. Co.	Z01	521	Dec 20 1916
20	SC 1	Indem	Dec 1 1915	A. K. Bowles Trus.	Somerset Coal Ry. Co.	Z01	521	Dec 20 1916
21	SC 2	Indem	Dec 1 1915	A. K. Bowles Trus.	Somerset Coal Ry. Co.	Z01	521	Dec 20 1916
22	SC 21	Public	Mar 19 1915	The Public Service Comm. Gen'ly. Penna.	Quemahoning Br. R. R. Co.	Z01	521	Dec 20 1916

RECORD OF CHANGES AFTER JUNE 30, 1919

STATION	COMM. REP. NO.	DATE COMPL.	DATE PUT ON MAP	KIND OF CHANGE
37+46	72-20-B	Sept. 26, 1920	December 13, 1922	Ext. 66d1 Con. to siding
12+85	1-21-A	Jan. 8, 1921	December 21, 1922	New office for Agent
72+21	72-21-A	May 15, 1921	January 9, 1923	New Water Tank
80+72	1-22-B	Oct. 11, 1921	October 11, 1923	Ext. 66d1 Con. to siding
13+08	110-20-B	Nov. 4, 1920	December 30, 1922	New Water Tank
53+86	69-27-A	May 4, 1922	November 30, 1922	New Water Tank
323+24	323-24-A	Mar. 2, 1932	October 16, 1935	Ext. 66d1 Con. to siding
90+309	190+76	Apr. 30, 1932	November 19, 1935	Ext. 66d1 Con. to siding
227+81	227-81-A	Mar. 23, 1936	March 10, 1938	New Crossing Stone
90+138	190-138-A	Sept. 30, 1938	March 30, 1939	New Splice & Addn. 67' to
19+57	19-57-A	May 1, 1937	April 11, 1939	Ext. 66d1 Con. to siding
88+75	1-57-B	Oct. 15, 1937	May 15, 1939	Ext. 66d1 Con. to siding
40+47	40-47-A	May 9, 1946	Oct. 19, 1946	Ext. 66d1 Con. to siding
53+47	53-47-B	Jul. 7, 1947	Oct. 26, 1948	Ext. 66d1 Con. to siding
39+46	261+32	Jul. 29, 1948	Jan. 15, 1949	Ext. 66d1 Con. to siding
72+00	10-48-B	Jul. 29, 1948	Jan. 15, 1949	Ext. 66d1 Con. to siding



Note:  
To get original stationing from 0+00 to station 46+43.4 (127)  
subtract 192 feet and from station 46+43.4 to station 218+00  
subtract 203 feet

STATE OF MARYLAND  
CITY OF BALTIMORE  
I, the undersigned, OFFICER OF THE CITY OF BALTIMORE, do hereby certify that this is a correct map in a series of 2 primary sheets and supplemental sheets of the Somerset Coal Railway Company, from Survey Station 0+00 to Survey Station 112+00 Main Line, State of Maryland, prepared for the records of said company.  
W. B. BROWN  
VALUATION ENGINEER  
SUBSCRIBED AND SWORN to before me, this 25th day of June, 1919, at Baltimore, Maryland.  
NOTARY PUBLIC IN AND FOR THE CITY OF BALTIMORE, STATE OF MARYLAND.  
M. J. COMMISSION EXPIRES  
July 1, 1921  
NOTICE: MAP NO. 29 (BALTIMORE) ISSUED TO 2000 SERIES BY ITS COMPLETION ON MAY 8, 1921.