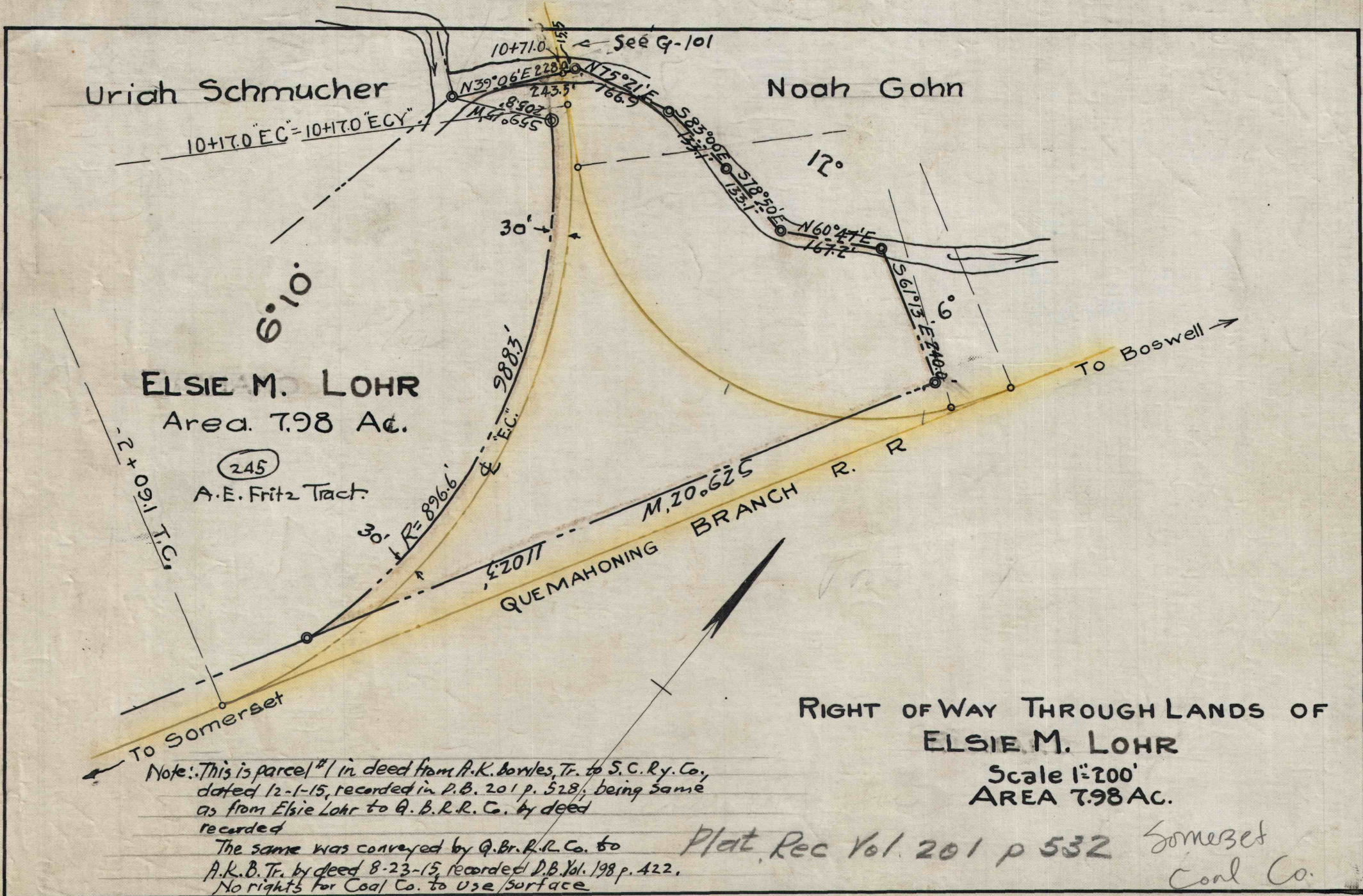


G-103



Uriah Schmucher

Noah Gohn

ELSIE M. LOHR
Area 7.98 Ac.

(245)
A.E. Fritz Tract.

To Somerset

To Boswell

QUEMAONING
BRANCH R. R.

RIGHT OF WAY THROUGH LANDS OF
ELSIE M. LOHR
Scale 1"=200'
AREA 7.98 AC.

Note: This is parcel #1 in deed from A.K. Bowles, Tr. to S.C. Ry. Co., dated 12-1-15, recorded in P.B. 201 p. 528, being same as from Elsie Lohr to Q. B. R. R. Co. by deed recorded

The same was conveyed by Q. B. R. R. Co. to A.K.B. Tr. by deed 8-23-15 recorded P.B. Vol. 198 p. 422. No rights for Coal Co. to use surface

Plat. Rec Vol. 201 p 532 Somerset Coal Co.

G-103