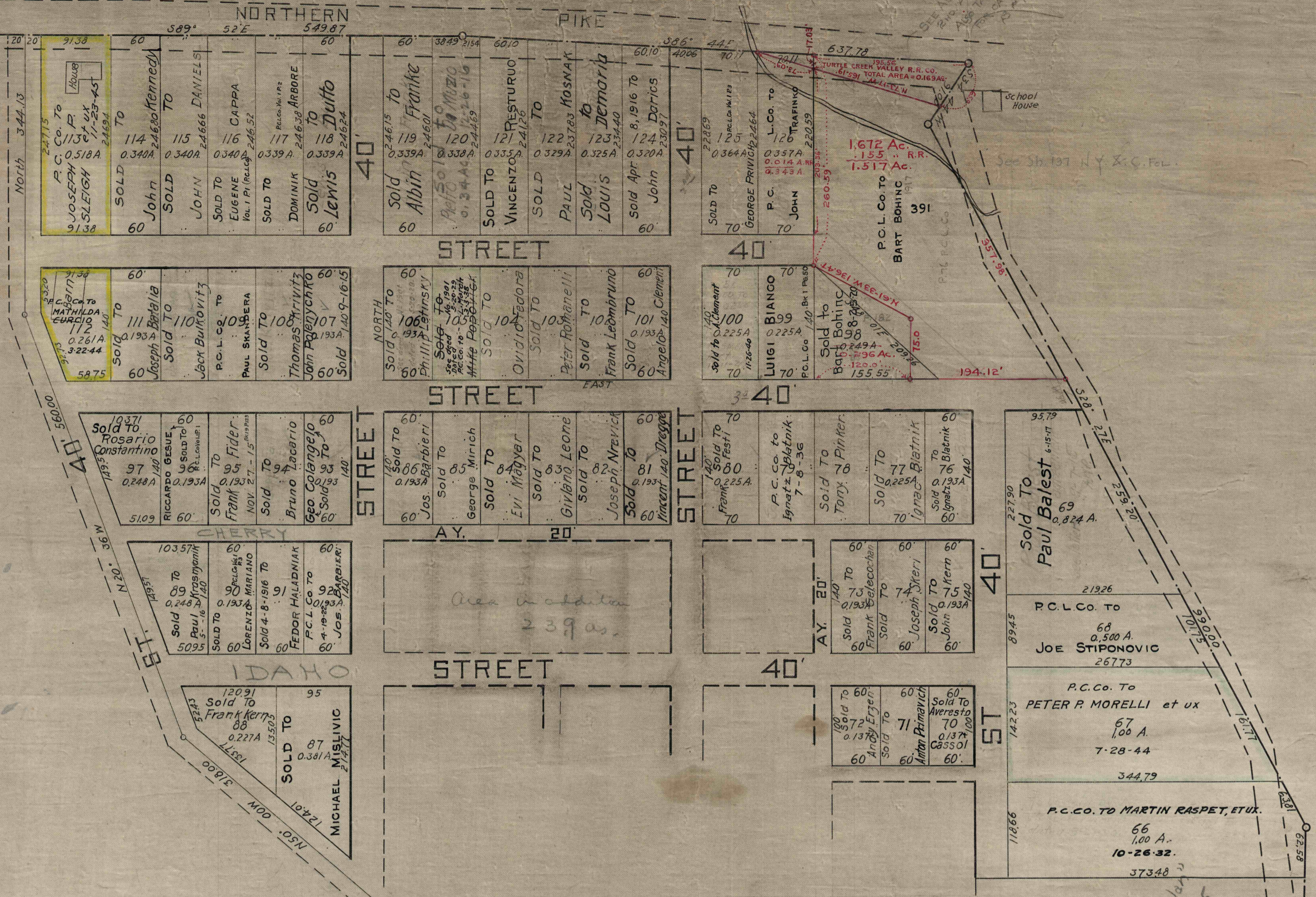


For Second Addn Plan See C-1937-D7



FIRST ADDITION TO
PEDORA PLAN OF LOTS
 LOCATED AT EXPORT
 FRANKLIN TWP. WESTMORELAND CO. PA.
 Laid out by the Pittsburgh Coal Company of Pennsylvania
 Scale 1"=100' Engr. Dpt. P. C. CO. Aug. 15th, 1912.

THE PITTSBURGH COAL COMPANY OF PENNSYLVANIA hereby adopts this Plan of Lots
 WITNESS the common and corporate seal of said Corporation, duly attested by its Vice President and Asst. Secretary this 15th day of Aug. A. D. 1912.

PITTSBURGH COAL COMPANY OF PENNSYLVANIA
 BY W.K. Field President
 ATTEST Carroll Westlake Asst. Secretary



Commonwealth of Pennsylvania } s.s.
 County of Allegheny
 On the 15th day of August A.D. 1912, before me the subscriber, a Notary Public in and for said County and State, personally appeared Aaron Westlake, Asst. Secretary of the said Pittsburgh Coal Company of Pennsylvania, who, being duly sworn according to law says that he was personally present at the execution of the adoption of the Plan of Lots attached hereto, and saw the common or corporate seal of said Corporation duly affixed thereto; that the seal so affixed thereto is the common or corporate seal of the said Corporation; that the said adoption of Plan of Lots was duly sealed and delivered by W.K. Field, Vice President of the said Corporation, as and for the adoption of the Plan of Lots of the said Corporation, for the use and purposes therein mentioned, and that the names of this deponent as Asst. Secretary, and W.K. Field, as Vice President of said Corporation, subscribed to the said adoption in attestation of its due execution and delivery, are of their and each of their respective handwritings.

Sworn to and subscribed before me the day and year aforesaid
 WITNESS my hand and Notarial seal
Harry A. Porter
 Notary Public
 My Commission expires Feb. 3rd, 1913

STATE OF PENNSYLVANIA } s.s.
 WESTMORELAND COUNTY }
 Recorded on this 20th day of August A.D. 1912 in the
 Recorder's office of said County in Plain Book 4 Page 39.
 Given under my hand and the Seal of the said
 office the date above written.
 L.C. Thomas Recorder

Note - 9-20-12
 Names in pencil show parties
 to whom agreements are made
 to convey lots O.M.P.

This Trac. is 1st. Addition to Pedora Plan
 For 4 Pedora Plan of Lots see A-10155
 For 2d. Addition see C-1937-D-7