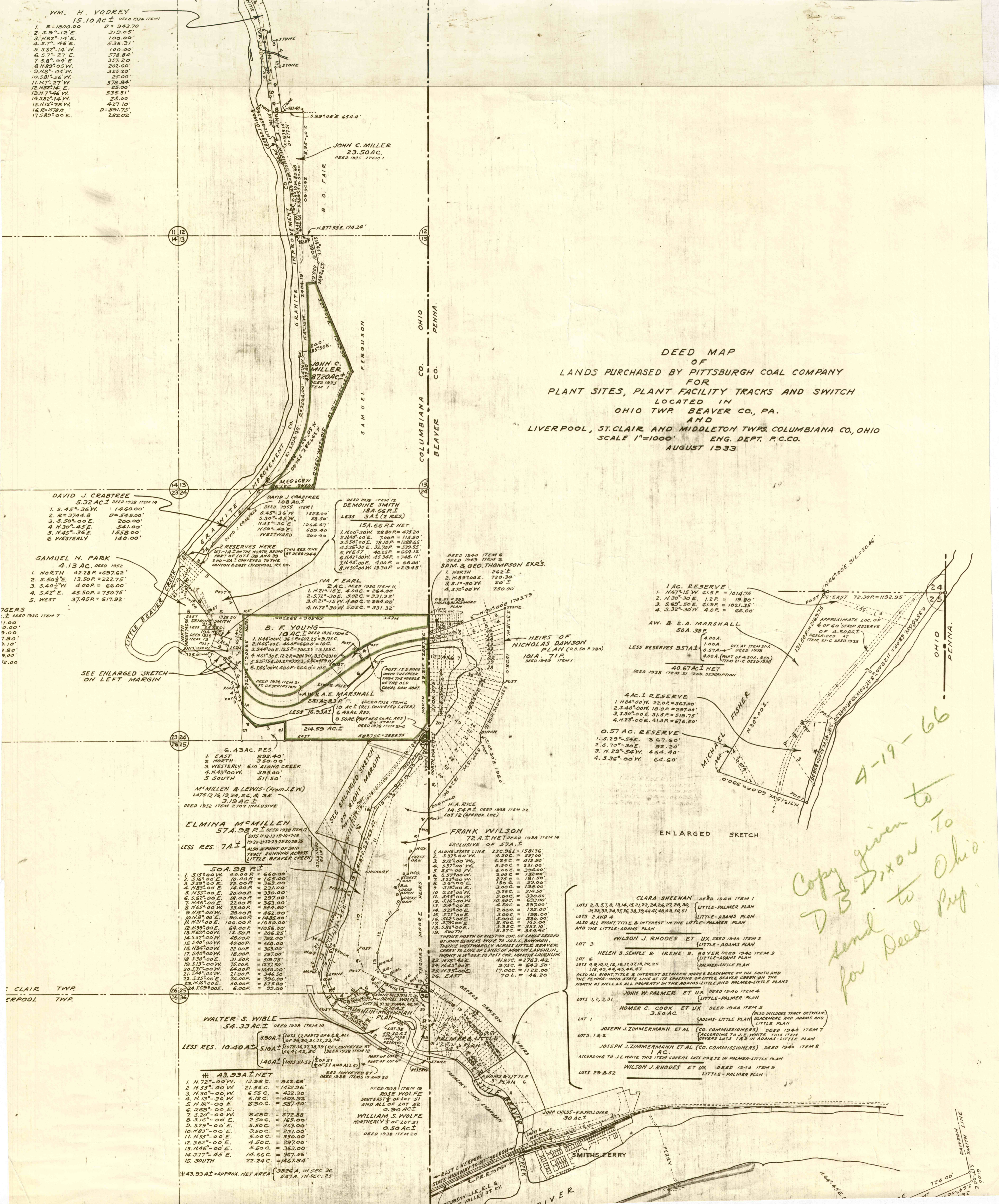


WM. H. VODREY
15.10 AC ± DEED 1934 ITEM 1

1. R=1800.00	D=943.70
2. S. 9°-12' E.	319.05'
3. N. 82°-14' E.	100.00'
4. S. 7°-46' E.	535.31'
5. S. 82°-14' W.	100.00'
6. S. 7°-27' E.	578.84'
7. S. 8°-04' E.	357.20'
8. N. 89°-05' W.	202.60'
9. N. 8°-04' W.	325.20'
10. S. 81°-56' W.	25.00'
11. N. 7°-27' W.	578.84'
12. N. 82°-14' E.	25.00'
13. N. 7°-46' W.	535.31'
14. S. 82°-14' W.	25.00'
15. N. 12°-28' W.	427.10'
16. E. 15°-18' S.	D=891.75'
17. S. 89°-00' E.	282.02'

DEED MAP
OF
LANDS PURCHASED BY PITTSBURGH COAL COMPANY
FOR
PLANT SITES, PLANT FACILITY TRACKS AND SWITCH
LOCATED IN
OHIO TWP BEAVER CO., PA.
AND
LIVERPOOL, ST. CLAIR AND MIDDLETON TWRS. COLUMBIANA CO., OHIO
SCALE 1"=1000'
ENG. DEPT. P.C.CO.
AUGUST 1933



DAVID J. CRABTREE
5.32 AC ± DEED 1938 ITEM 14

1. S. 45°-36' W.	146.00'
2. R=3744.8	D=545.00'
3. S. 50°-00' E.	200.00'
4. N. 30°-45' E.	541.00'
5. N. 45°-36' E.	1558.00'
6. WESTERLY	140.00'

SAMUEL N. PARK
4.13 AC, DEED 1952

1. NORTH	42.28 P = 697.62'
2. S. 50° E.	13.50 P = 222.75'
3. S. 40° W.	4.00 P = 66.00'
4. S. 42° E.	45.50 P = 750.75'
5. WEST	37.45 P = 617.92'

DEED 1936 ITEM 7

1.00'
0.00'
9.00'
7.80'
7.10'
3.80'
9.00'

SEE ENLARGED SKETCH ON LEFT MARGIN

6.43 AC. RES.

1. EAST	892.40'
2. NORTH	350.00'
3. WESTERLY	610 ALONG CREEK
4. N. 49° 00' W.	395.00'
5. SOUTH	511.50'

M. MILLEN & LEWIS (From J.E.W.)
LOTS 13, 15, 18, 24, 25, 28, 35
3.19 AC ±
DEED 1932 ITEM 2 TOT INCLUSIVE

ELMINA McMILLEN
57A.98 P ± DEED 1938 ITEM 17
LOTS 11-13, 15, 16, 17, 18, 19, 20, 21, 22, 23, 25, 26, 28, 35
LESS RES. 7A ±
ALSO A POINT OF SAID TRACT RUNNING ACROSS LITTLE BEAVER CREEK

1. S. 15° 00' W.	49.89 P = 660.00'
2. S. 16° 00' E.	20.00 P = 185.00'
3. S. 29° 00' E.	22.00 P = 363.00'
4. N. 85° 00' E.	14.00 P = 231.00'
5. N. 55° 00' E.	20.00 P = 330.00'
6. S. 62° 00' E.	18.00 P = 297.00'
7. N. 45° 00' E.	22.00 P = 363.00'
8. N. 65° 00' W.	33.00 P = 544.50'
9. N. 15° 00' W.	28.00 P = 462.00'
10. N. 5° 00' E.	30.00 P = 485.00'
11. N. 2° 00' E.	100.00 P = 1650.00'
12. N. 39° 00' E.	64.00 P = 1056.00'
13. N. 65° 00' W.	12.50 P = 206.25'
14. S. 32° 00' W.	48.00 P = 792.00'
15. S. 40° 00' W.	40.00 P = 660.00'
16. N. 84° 00' W.	22.00 P = 363.00'
17. S. 40° 00' W.	18.00 P = 297.00'
18. S. 30° 00' E.	31.50 P = 517.50'
19. S. 13° 00' W.	75.00 P = 1237.50'
20. S. 31° 00' W.	64.00 P = 1056.00'
21. S. 48° 00' W.	21.00 P = 346.50'
22. S. 25° 00' E.	26.00 P = 396.00'
23. N. 16° 00' E.	50.00 P = 825.00'
24. S. 59° 00' E.	6.00 P = 99.00'

WALTER S. WIBLE
54.33 AC ± DEED 1938 ITEM 10

1. N. 75°-00' W.	13.58 C. = 922.68'
2. N. 55°-00' W.	21.56 C. = 1422.36'
3. N. 30°-00' W.	6.55 C. = 432.30'
4. N. 13°-30' W.	6.12 C. = 403.92'
5. N. 18°-00' E.	8.90 C. = 587.40'
6. S. 69°-00' E.	5.00 C. = 325.00'
7. S. 20°-00' W.	8.68 C. = 572.88'
8. S. 16°-00' E.	2.50 C. = 162.50'
9. S. 29°-00' E.	5.90 C. = 383.00'
10. N. 48°-00' E.	3.50 C. = 227.50'
11. N. 65°-00' E.	5.00 C. = 325.00'
12. S. 62°-00' E.	4.50 C. = 292.50'
13. N. 46°-00' E.	5.50 C. = 357.50'
14. S. 77°-45' E.	14.66 C. = 967.56'
15. SOUTH	22.24 C. = 1457.84'

43.93A ± NET
RES. CONVEYED BY DEED 1938 ITEMS 10 AND 20

1. N. 75°-00' W.	13.58 C. = 922.68'
2. N. 55°-00' W.	21.56 C. = 1422.36'
3. N. 30°-00' W.	6.55 C. = 432.30'
4. N. 13°-30' W.	6.12 C. = 403.92'
5. N. 18°-00' E.	8.90 C. = 587.40'
6. S. 69°-00' E.	5.00 C. = 325.00'
7. S. 20°-00' W.	8.68 C. = 572.88'
8. S. 16°-00' E.	2.50 C. = 162.50'
9. S. 29°-00' E.	5.90 C. = 383.00'
10. N. 48°-00' E.	3.50 C. = 227.50'
11. N. 65°-00' E.	5.00 C. = 325.00'
12. S. 62°-00' E.	4.50 C. = 292.50'
13. N. 46°-00' E.	5.50 C. = 357.50'
14. S. 77°-45' E.	14.66 C. = 967.56'
15. SOUTH	22.24 C. = 1457.84'

43.93A ± APPROX. NET AREA
567A. IN SEC. 36
567A. IN SEC. 25

DAVID J. CRABTREE
10.8 AC ± DEED 1955 ITEM 1

1. S. 45°-36' W.	1558.00'
2. N. 30°-45' W.	58.50'
3. N. 45°-36' E.	1264.47'
4. N. 59°-49' E.	609.40'
5. WESTWARD	200.00'

DEMOISE SMITH
18A.66 P ± (2 RES.)
LESS 3A ± (2 RES.)
15A.66 P ± NET

1. N. 00°-30' W.	28.80 P = 475.20'
2. N. 00°-00' E.	7.00 P = 115.50'
3. S. 50°-00' E.	78.10 P = 1288.65'
4. S. 26°-30' E.	32.70 P = 539.55'
5. WEST	40.15 P = 654.12'
6. N. 42°-00' W.	45.34 P = 748.11'
7. N. 40°-00' E.	4.00 P = 66.00'
8. N. 50°-00' W.	13.30 P = 219.45'

B. F. YOUNG
10 AC ± DEED 1936 ITEM 6

1. N. 44° 00' W.	36.5 P = 602.25 = 3.125 C.
2. N. 40° 00' E.	40.0 P = 640.0 C.
3. S. 44° 00' E.	12.5 P = 206.25 = 3.125 C.
4. N. 62° 30' E.	12.2 P = 201.30, 3.5 C = 231.0'
5. S. 15° 15' E.	24.2 P = 399.3, 6.5 C = 429.0'
6. S. 46° 00' W.	40.0 P = 660.0 C.

A. W. & E. A. MARSHALL
231 AC ± DEED 1936 ITEM 8

1. N. 44° 00' W.	36.5 P = 602.25 = 3.125 C.
2. N. 40° 00' E.	40.0 P = 640.0 C.
3. S. 44° 00' E.	12.5 P = 206.25 = 3.125 C.
4. N. 62° 30' E.	12.2 P = 201.30, 3.5 C = 231.0'
5. S. 15° 15' E.	24.2 P = 399.3, 6.5 C = 429.0'
6. S. 46° 00' W.	40.0 P = 660.0 C.

ELMINA McMILLEN
57A.98 P ± DEED 1938 ITEM 17
LOTS 11-13, 15, 16, 17, 18, 19, 20, 21, 22, 23, 25, 26, 28, 35
LESS RES. 7A ±
ALSO A POINT OF SAID TRACT RUNNING ACROSS LITTLE BEAVER CREEK

FRANK WILSON
72 A ± NET DEED 1938 ITEM 16
EXCLUSIVE OF 57A ±

1. ALONG STATE LINE	230.36 L = 1581.36'
2. S. 37° 00' W.	4.50 C. = 297.00'
3. S. 72° 00' W.	6.25 C. = 412.50'
4. S. 37° 00' W.	4.50 C. = 297.00'
5. S. 5° 00' W.	6.00 C. = 396.00'
6. S. 37° 00' W.	2.00 C. = 132.00'
7. S. 37° 00' W.	2.75 C. = 178.88'
8. S. 38° 00' E.	1.80 C. = 117.00'
9. S. 10° 00' W.	3.00 C. = 198.00'
10. S. 25° 00' W.	3.25 C. = 215.25'
11. S. 45° 00' W.	5.00 C. = 330.00'
12. S. 16° 00' W.	10.50 C. = 692.25'
13. S. 30° 00' E.	4.50 C. = 297.00'
14. S. 37° 00' W.	3.00 C. = 198.00'
15. S. 37° 00' W.	2.75 C. = 178.88'
16. S. 38° 00' E.	1.80 C. = 117.00'
17. S. 10° 00' W.	3.00 C. = 198.00'
18. S. 25° 00' W.	3.25 C. = 215.25'
19. S. 45° 00' W.	5.00 C. = 330.00'
20. S. 16° 00' W.	10.50 C. = 692.25'
21. S. 30° 00' E.	4.50 C. = 297.00'
22. S. 37° 00' W.	3.00 C. = 198.00'
23. S. 37° 00' W.	2.75 C. = 178.88'
24. S. 38° 00' E.	1.80 C. = 117.00'
25. N. 35° 00' E.	17.00 C. = 1122.00'
26. EAST	70 L. = 46.20'

WALTER S. WIBLE
54.33 AC ± DEED 1938 ITEM 10

WALTER S. WIBLE
54.33 AC ± DEED 1938 ITEM 10

WALTER S. WIBLE
54.33 AC ± DEED 1938 ITEM 10

WALTER S. WIBLE
54.33 AC ± DEED 1938 ITEM 10

JOHN C. MILLER
23.50 AC DEED 1935 ITEM 1

JOHN C. MILLER
23.50 AC DEED 1935 ITEM 1

JOHN C. MILLER
23.50 AC DEED 1935 ITEM 1

JOHN C. MILLER
23.50 AC DEED 1935 ITEM 1

JOHN C. MILLER
23.50 AC DEED 1935 ITEM 1

JOHN C. MILLER
23.50 AC DEED 1935 ITEM 1

JOHN C. MILLER
23.50 AC DEED 1935 ITEM 1

JOHN C. MILLER
23.50 AC DEED 1935 ITEM 1

JOHN C. MILLER
23.50 AC DEED 1935 ITEM 1

JOHN C. MILLER
23.50 AC DEED 1935 ITEM 1

SAM & GEO. THOMPSON EXRS.
1. NORTH 262 ±
2. N. 89° 00' E. 720.30
3. S. 1° 30' W. 20 ±
4. S. 70° 00' W. 750.00

HEIRS OF NICHOLAS DAWSON
PLAN (R.S. P. 388)
101A. 71 P.
DEED 1945 ITEM 1

HEIRS OF NICHOLAS DAWSON
PLAN (R.S. P. 388)
101A. 71 P.
DEED 1945 ITEM 1

HEIRS OF NICHOLAS DAWSON
PLAN (R.S. P. 388)
101A. 71 P.
DEED 1945 ITEM 1

HEIRS OF NICHOLAS DAWSON
PLAN (R.S. P. 388)
101A. 71 P.
DEED 1945 ITEM 1

HEIRS OF NICHOLAS DAWSON
PLAN (R.S. P. 388)
101A. 71 P.
DEED 1945 ITEM 1

HEIRS OF NICHOLAS DAWSON
PLAN (R.S. P. 388)
101A. 71 P.
DEED 1945 ITEM 1

HEIRS OF NICHOLAS DAWSON
PLAN (R.S. P. 388)
101A. 71 P.
DEED 1945 ITEM 1

HEIRS OF NICHOLAS DAWSON
PLAN (R.S. P. 388)
101A. 71 P.
DEED 1945 ITEM 1

HEIRS OF NICHOLAS DAWSON
PLAN (R.S. P. 388)
101A. 71 P.
DEED 1945 ITEM 1

1 AC. RESERVE
1. N. 67°-15' W. 61.5 P. = 1014.75'
2. N. 30°-30' E. 1.2 P. = 19.80'
3. S. 65°-50' E. 61.9 P. = 1021.35'
4. S. 32°-30' W. 4.0 P. = 66.00'

AW. & E.A. MARSHALL
50A. 38 P.
LESS RESERVES 357A ±
4.00A. (PART OF 4.50A. RES. DEED 1938)
0.57A. (PART OF 4.50A. RES. DEED 1938)
4.00A. (PART OF 4.50A. RES. DEED 1938)
40.67 AC ± NET
DEED 1938 ITEM 21 2ND DESCRIPTION

4 AC. ± RESERVE
1. N. 84°-00' W. 22.0 P. = 363.00'
2. S. 40°-30' E. 92.20'
3. S. 30°-00' E. 31.5 P. = 519.75'
4. N. 23°-00' E. 41.0 P. = 676.50'

0.57 AC. RESERVE
1. S. 29°-54' E. 367.60'
2. S. 70°-30' E. 92.20'
3. N. 29°-58' W. 464.40'
4. S. 36°-00' W. 64.60'

CLARA SHEEHAN DEED 1940 ITEM 1
LOTS 2, 3, 5, 7, 8, 13, 14, 15, 21, 22, 26, 27, 28, 30, 31, 32, 33, 34, 35, 36, 38, 39, 44, 41, 48, 49, 50, 51
LITTLE-ADAMS PLAN
LITTLE-ADAMS PLAN
LITTLE-ADAMS PLAN
ALSO ALL RIGHT TITLE & INTEREST IN THE LITTLE-PALMER PLAN AND THE LITTLE-ADAMS PLAN

WILSON J. RHODES ET UX DEED 1940 ITEM 2
LITTLE-ADAMS PLAN
HELEN B. SEMPLE & IRENE B. BOYER DEED 1940 ITEM 3
LITTLE-ADAMS PLAN
LOTS 4, 9, 10, 11, 12, 16, 17, 37, 19, 20, 25
LITTLE-ADAMS PLAN
LITTLE-ADAMS PLAN
ALSO ALL RIGHT TITLE & INTEREST BETWEEN MARY E. BLACKMORE ON THE SOUTH AND THE PENNA.-OHIO STATE LINE AT ITS CROSSING OF LITTLE BEAVER CREEK ON THE NORTH AS WELL AS ALL PROPERTY IN THE ADAMS-LITTLE AND PALMER-LITTLE PLANS

JOHN W. PALMER ET UX DEED 1940 ITEM 4
LITTLE-PALMER PLAN
LOTS 1, 2, 3, 31
HOMER C. COOK ET UX DEED 1940 ITEM 5
3.50 AC. (ALSO INCLUDES TRACT BETWEEN ADAMS-LITTLE PLAN BLACKMORE AND ADAMS AND LITTLE PLAN)

JOSEPH J. ZIMMERMANN ET AL (CO. COMMISSIONERS) DEED 1940 ITEM 7
LITTLE PLAN
LITTLE PLAN
ALSO ALL RIGHT TITLE & INTEREST BETWEEN MARY E. BLACKMORE ON THE SOUTH AND THE PENNA.-OHIO STATE LINE AT ITS CROSSING OF LITTLE BEAVER CREEK ON THE NORTH AS WELL AS ALL PROPERTY IN THE ADAMS-LITTLE AND PALMER-LITTLE PLANS

WILSON J. RHODES ET UX DEED 1940 ITEM 9
LITTLE-PALMER PLAN
LOTS 29 & 52

4-19-66
Copy given to D B Dixon to send to Ohio for Deed Prep.