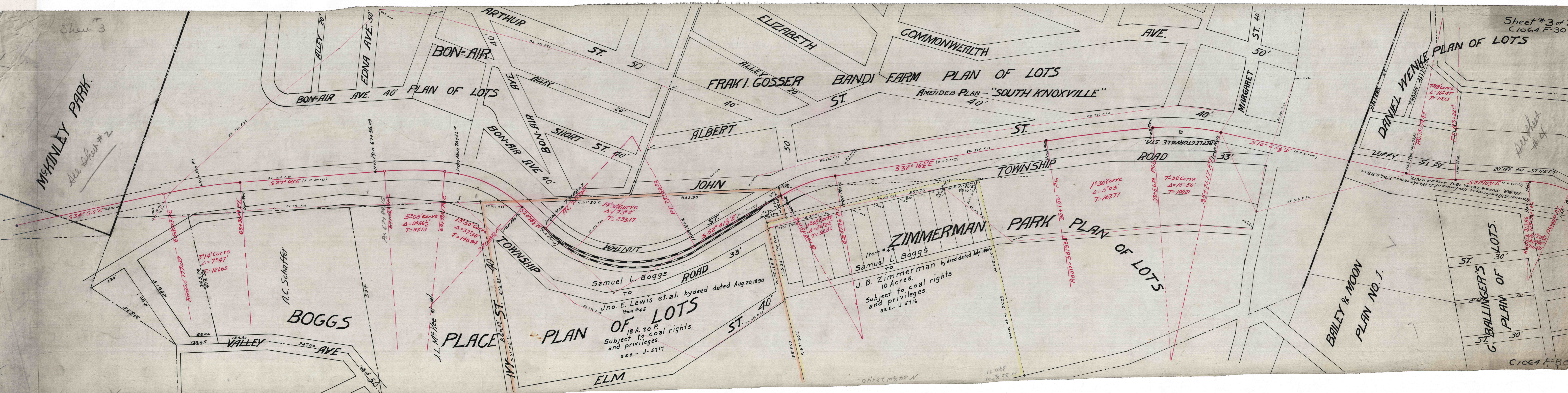


Sheet #3

McKINLEY PARK
See Sheet #2



See Sheet #4

A.C. Schaffer
BOGGS

J.L. McFee et al.
PLACE

Item #44
Samuel L. Boggs
to
J. B. Zimmerman, by deed dated July 1, 1890,
10 Acres,
subject to coal rights
and privileges.
SEE - J. 5716

Item #45
Jno. E. Lewis et al. by deed dated Aug. 20, 1890,
18 A. 20 P.
Subject to coal rights
and privileges.
SEE - J. 5717

BAILEY & MOON
PLAN NO. 1

G. BALLINGER'S
PLAN OF LOTS

ZIMMERMAN
PARK
PLAN OF LOTS

JOHN
ST.

WALNUT
ST.

Samuel L. Boggs
ROAD

TOWNSHIP
ROAD

REFLECTORWALE STN

LUFFY
ST.

ST. 30'

ST. 30'

ST. 30'

ST. 30'

BON-AIR
AVE. 40'

BON-AIR
AVE 40'

SHORT ST. 40'

ALBERT
ST. 50'

FRAKI GOSSER
BANDI FARM
PLAN OF LOTS
AMENDED PLAN - "SOUTH KNOXVILLE"
40'

ST. 40'

ST. 40'

ST. 50'

ST. 20'

20' off for STREET

VALLEY
AVE

ELM
ST.

AVE.

ST. 40'

ST. 40'

ST. 40'

ST. 20'

ST. 20'

ST. 30'

ST. 30'

ST. 30'

ST. 30'

ST. 30'

ALLEY 20'

EDNA AVE. 50'

ARTHUR
ST. 50'

ST. 50'

ALLEY 20'

ELIZABETH
AVE.

COMMONWEALTH
AVE.

ST. 40'

MARGARET
ST.

ST. 40'

ST. 40'

ST. 40'

ST. 40'

ST. 40'

ST. 40'

ST. 40'

ALLEY 20'

ALLEY 20'

ALLEY 20'

ALLEY 20'

ALLEY 20'

ALLEY 20'

ALLEY 20'

ALLEY 20'

ALLEY 20'

ALLEY 20'

ALLEY 20'

ALLEY 20'

ALLEY 20'

ALLEY 20'

ALLEY 20'

ALLEY 20'

ALLEY 20'