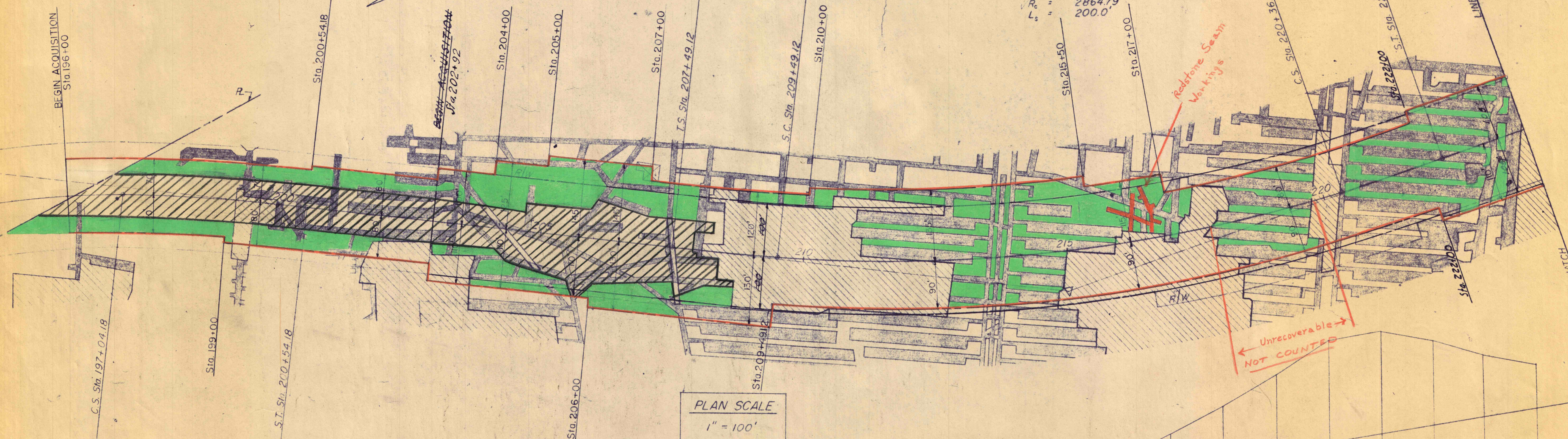
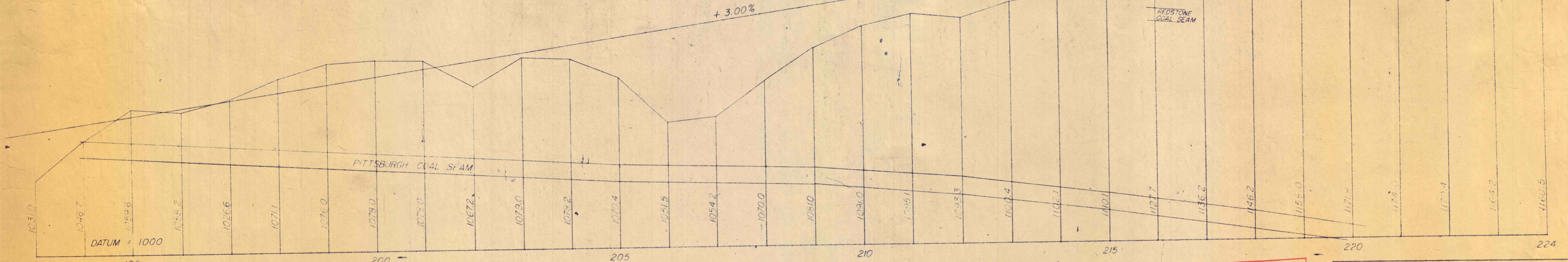


31E 31F
Sta. 193+50

PI Sta. 215+04.07
 $\Delta = 25^{\circ}-45'$
 $V_c = 2^{\circ}00'$
 $T_c = 550.61'$
 $L_c = 1087.50'$
 $V_{R_c} = 2864.79'$
 $L_s = 200.0'$

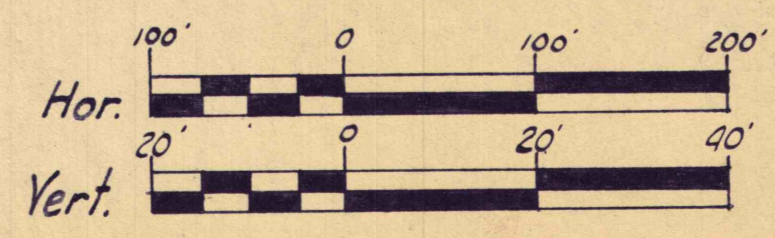


PLAN SCALE
1" = 100'



DATUM = 1000

PROFILE SCALE
HOR. 1" = 100'
VERT. 1" = 20'



OFFICE COPY

ISSUED
OCT 9 1953
WESTMORELAND COAL CO.
IRWIN, PA.

RECEIVED
AUG 31 1953
WESTMORELAND COAL CO.
IRWIN, PA.

PENNSYLVANIA TURNPIKE COMMISSION
 WESTERN EXTENSION - DISTRICT NO. 9
 SECTION 31F - CONTRACT NO. 302
 WESTMORELAND COUNTY STA. 193+50 TO STA. 224
 BITUMINOUS DEEP MINING CONDEMNATION AREAS
 WESTMORELAND COAL CO., IRWIN, PENNA.
 PITTSBURGH SEAM

Scale: As Shown	DATE: OCT. 30, 1950	PLAN NO. 6001
Drawn by: L.R.D.		SHEET NO. 1 of 8