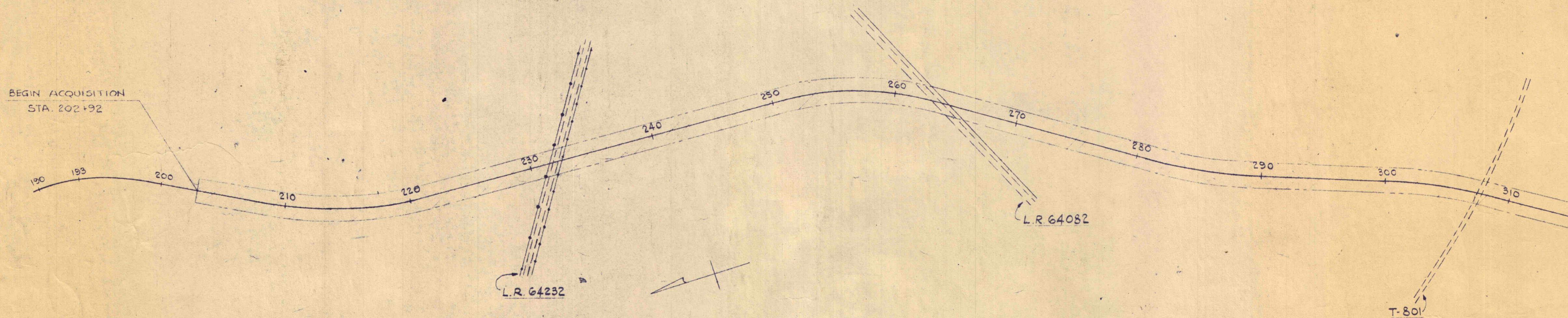


PENNSYLVANIA TURNPIKE COMMISSION

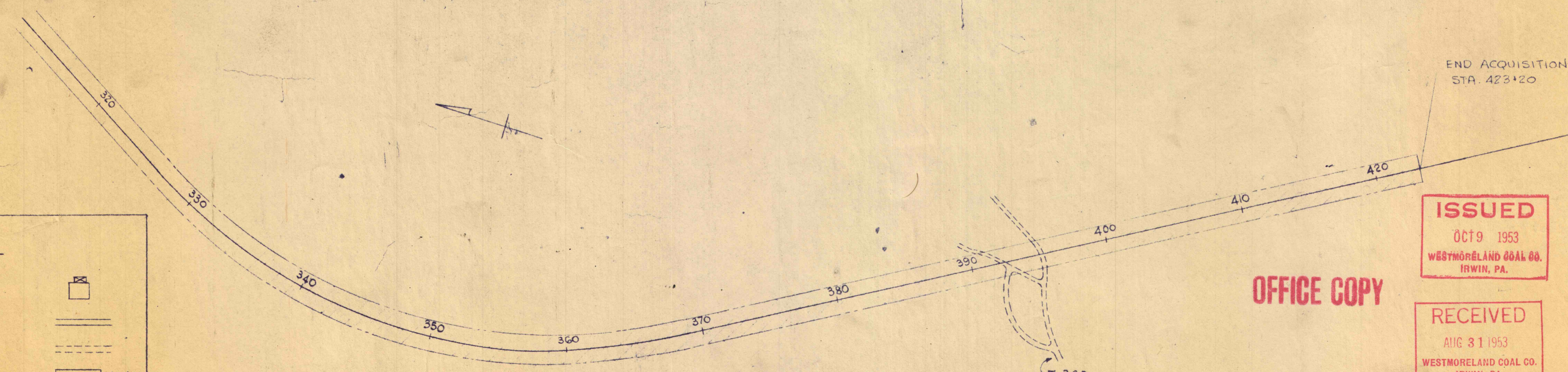
WESTERN EXTENSION DISTRICT No. 9

DRAWINGS
FOR
BITUMINOUS DEEP MINING CONDEMNATION AREAS

SECTION No. 31F & 31G
IN WESTMORELAND COUNTY
FROM STA. 193 TO STA. 422



INDEX MAP SCALE 1" = 500'



CONVENTIONAL SIGNS

COAL CONTOURS	500	BUILDINGS	
COMPLETELY MINED		COAL SEAM	
HAULAGEWAYS ROOMS BUTTS & CROSSCUTS		ROADS	
CENTERLINE		SOLID COAL	
R/W LINE		COAL ACQUISITION LIMITS (in red)	

OFFICE COPY

ISSUED
OCT 9 1953
WESTMORELAND COAL CO.
IRWIN, PA.

RECEIVED
AUG 31 1953
WESTMORELAND COAL CO.
IRWIN, PA.

PREPARED BY
NEW KENSINGTON DISTRICT OFFICE
W.M. [Signature]
Dist. Const Engr.
May 2 - 1950
Date

RECOMMENDED _____
CHIEF ENGINEER
PENNSYLVANIA TURNPIKE COMM.
APPROVED _____
PENNSYLVANIA TURNPIKE COMMISSION
ATTEST _____
SECRETARY AND
TREASURER