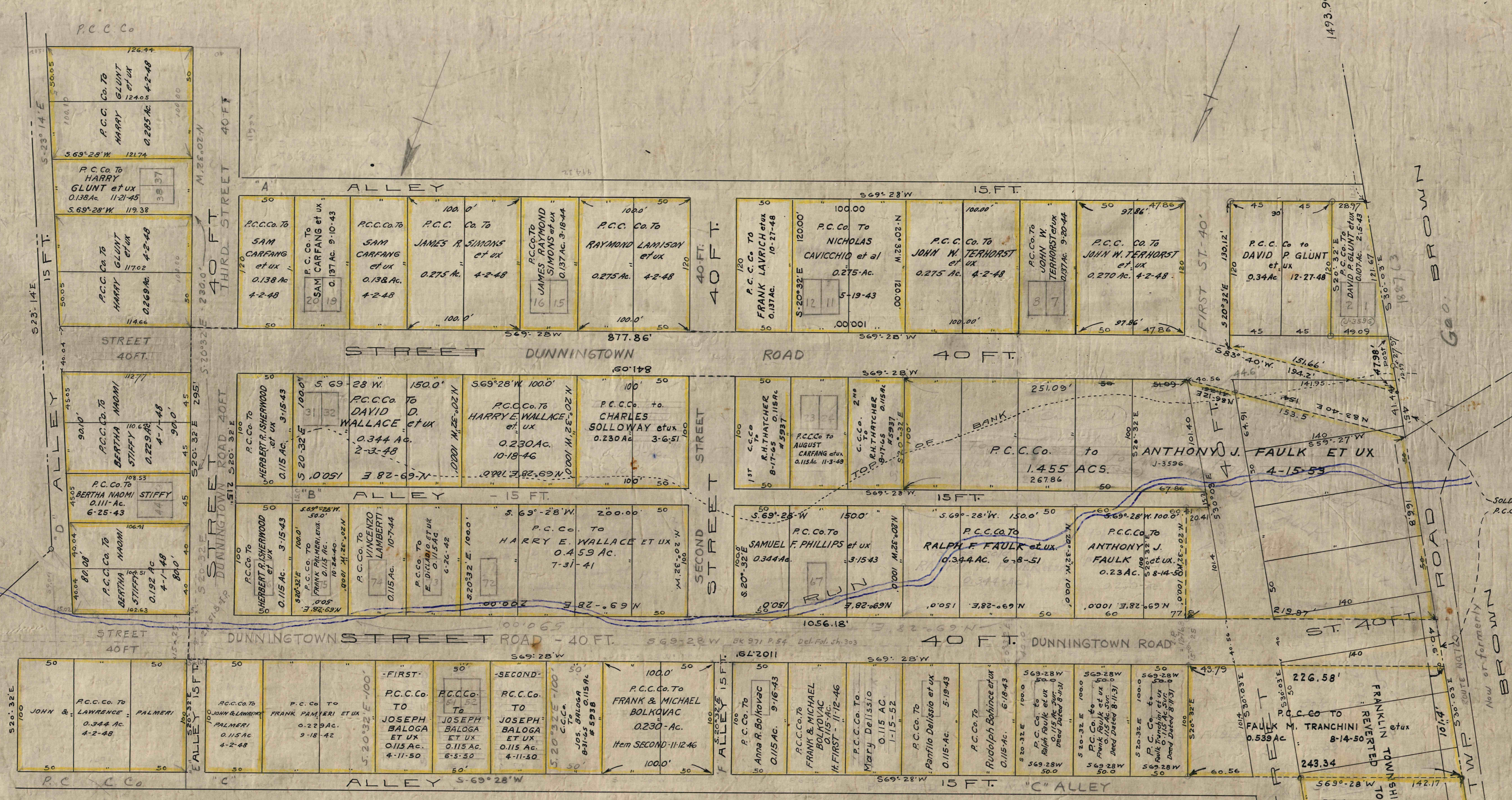


KEYSTONE COAL & COKE CO.



PLAN OF LOTS
Laid out for
NEW YORK & CLEVELAND GAS COAL CO.

Situate in Franklin Twp. Westmoreland Co. Pa.

July 1910

Scale 50' = 1 inch

Eng. Depr. P.C.C. Co.

At Dalmont

Approved E. J. Taylor

Town of Dunnington on Appes Lusk tract.

Chief Engineer

Dalmont Houses

File # 1087

Stone at NW. Cor. of Appes Lusk Tract