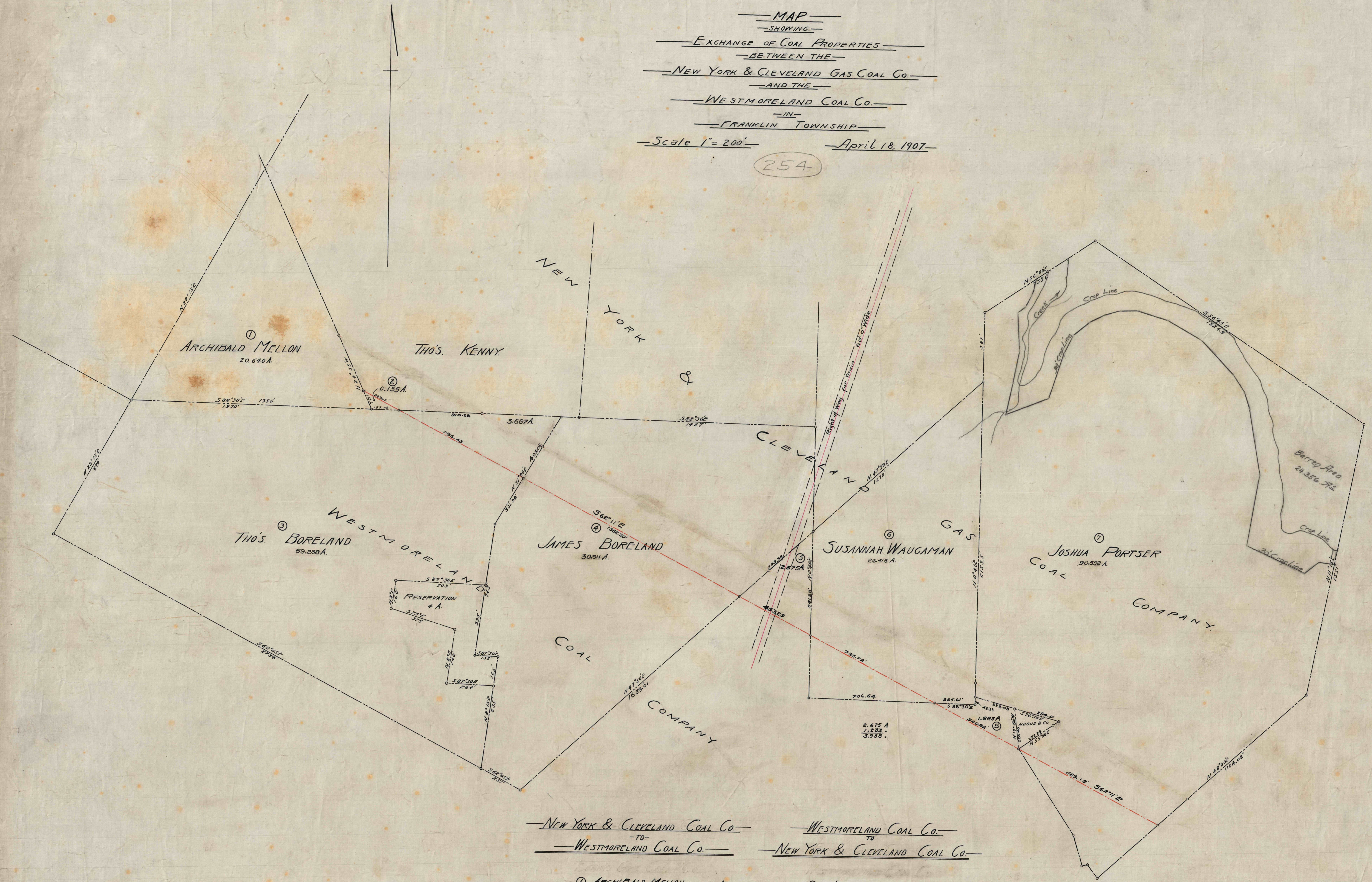


MAP
SHOWING
EXCHANGE OF COAL PROPERTIES
BETWEEN THE
NEW YORK & CLEVELAND GAS COAL CO.
AND THE
WESTMORELAND COAL CO.
IN
FRANKLIN TOWNSHIP
Scale 1" = 200' April 18, 1907.

254



NEW YORK & CLEVELAND COAL CO.
WESTMORELAND COAL CO.

① ARCHIBALD MELLON	20.640 ACRES	③ JAMES BORELAND	3.958 ACRES
② THOS. KENNY	0.155 "	④ SUSANNA WAUGAMAN	26.415 "
③ THOS. BORELAND	69.238 "	⑤ JOSHUA FORTSER	90.532 "
④ JAMES BORELAND	30.911 "		
TOTAL	120.944 "	TOTAL	120.925 "