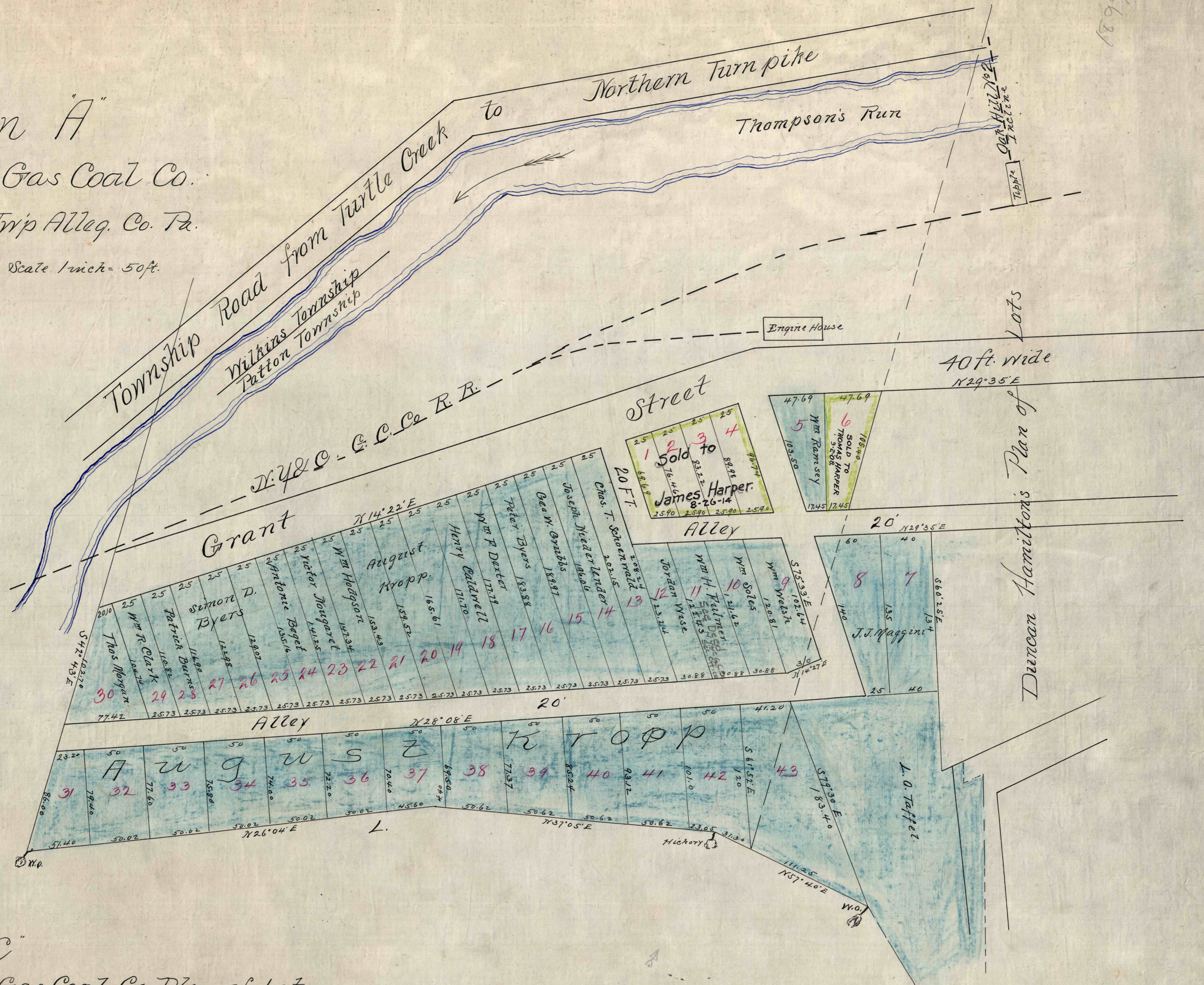


Section A

New York & Cleveland Gas Coal Co.

Plan of Lots Patton Twp Alleg. Co. Pa.

Recorded Vol. 5 Pages 14 & 15 Scale 1 inch = 50 ft.

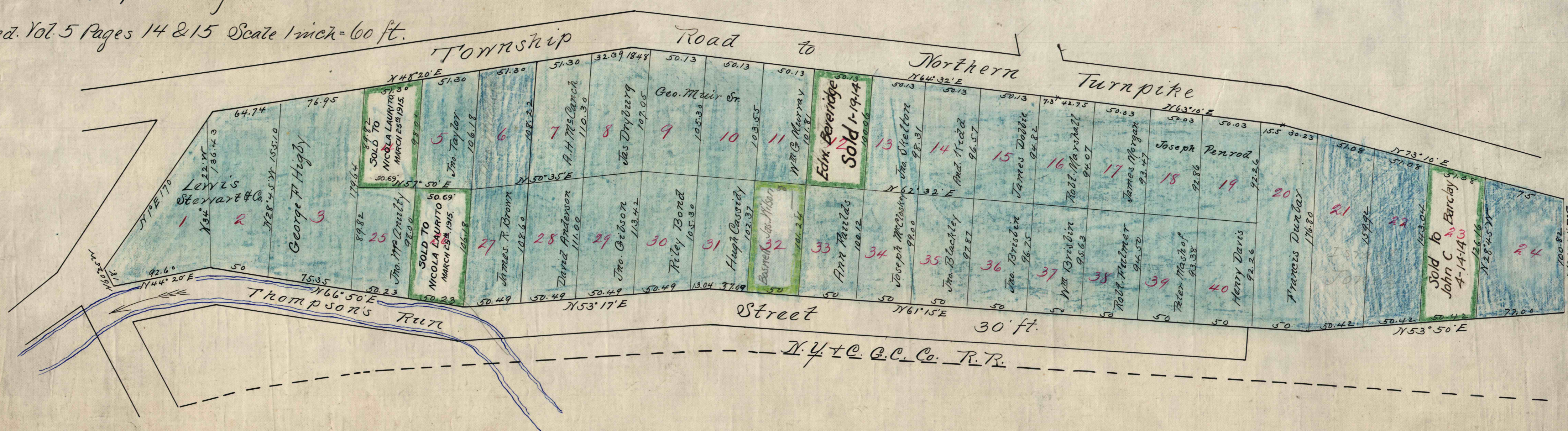


Section C

New York & Cleveland Gas Coal Co. Plan of Lots.

Wilkins Twp. Alleg. Co. Pa.

Recorded Vol. 5 Pages 14 & 15 Scale 1 inch = 60 ft.



Oak Hill Mine No. 3

Incline

1899

C/870 C-18