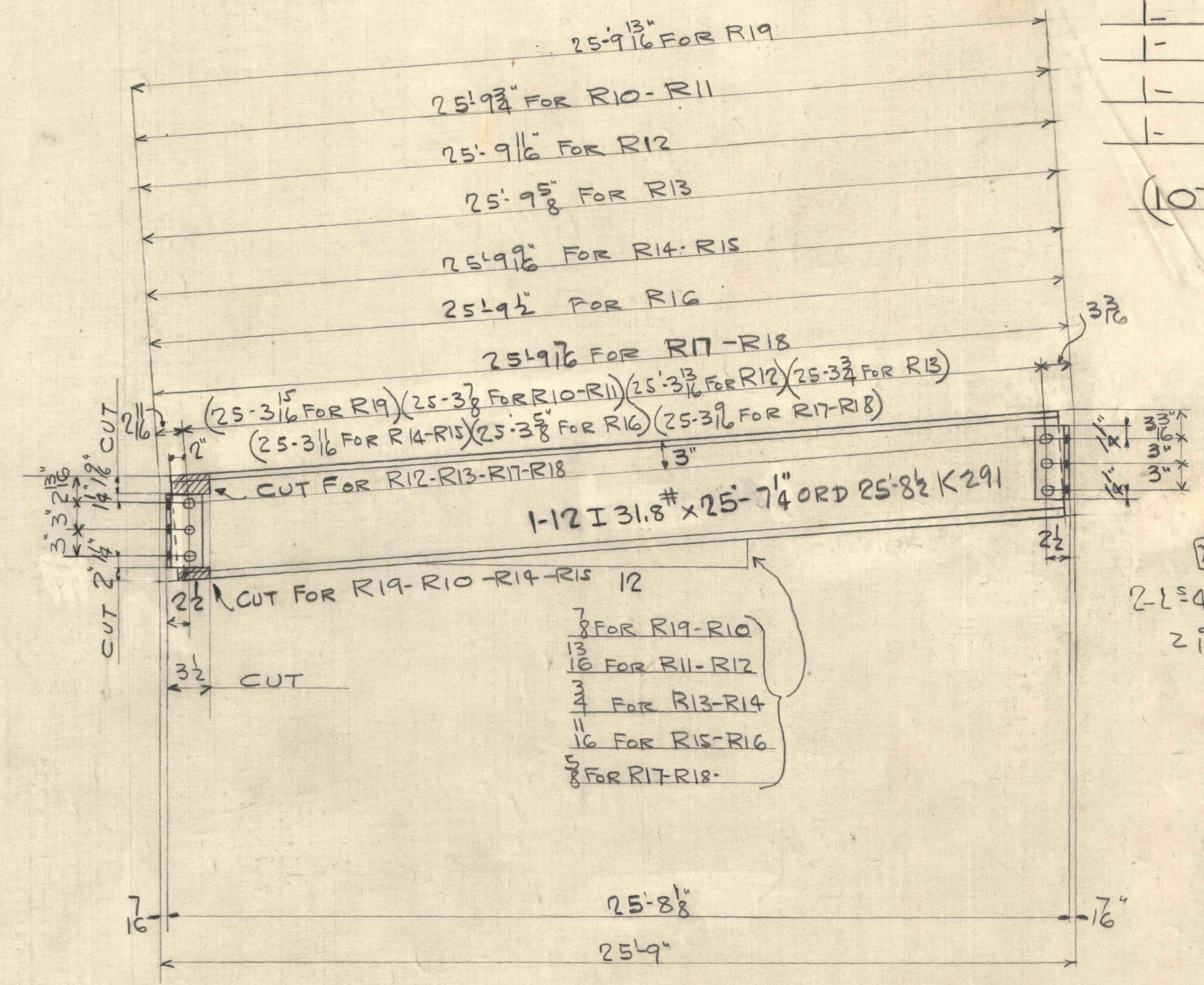
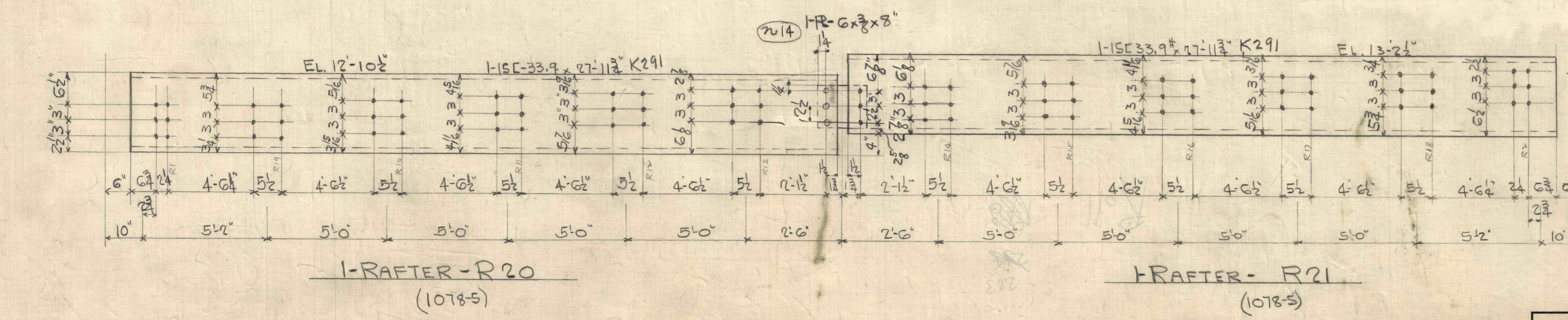
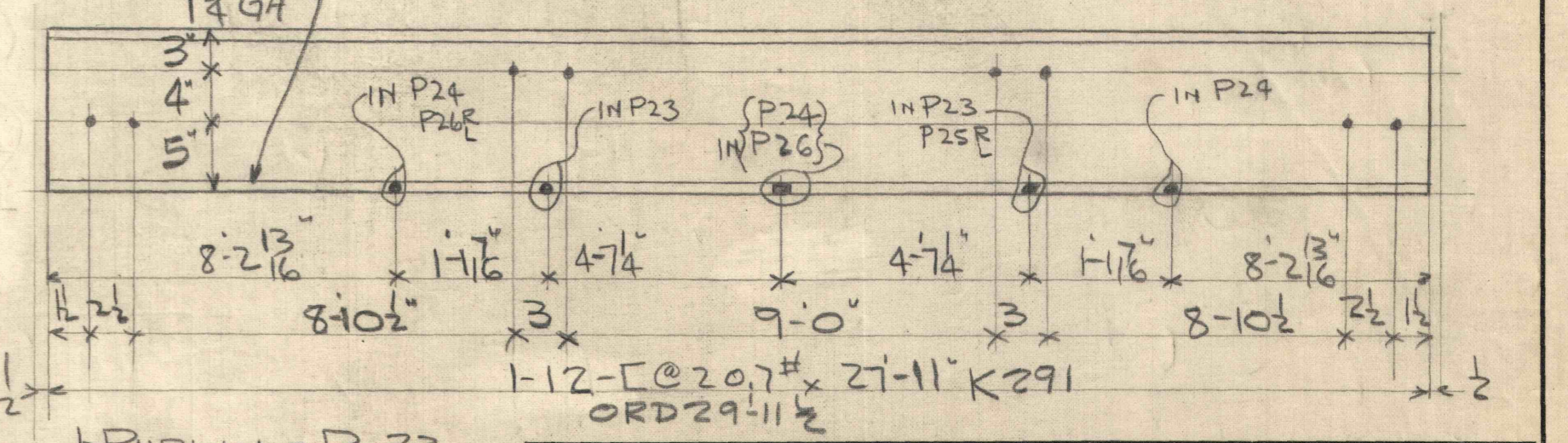
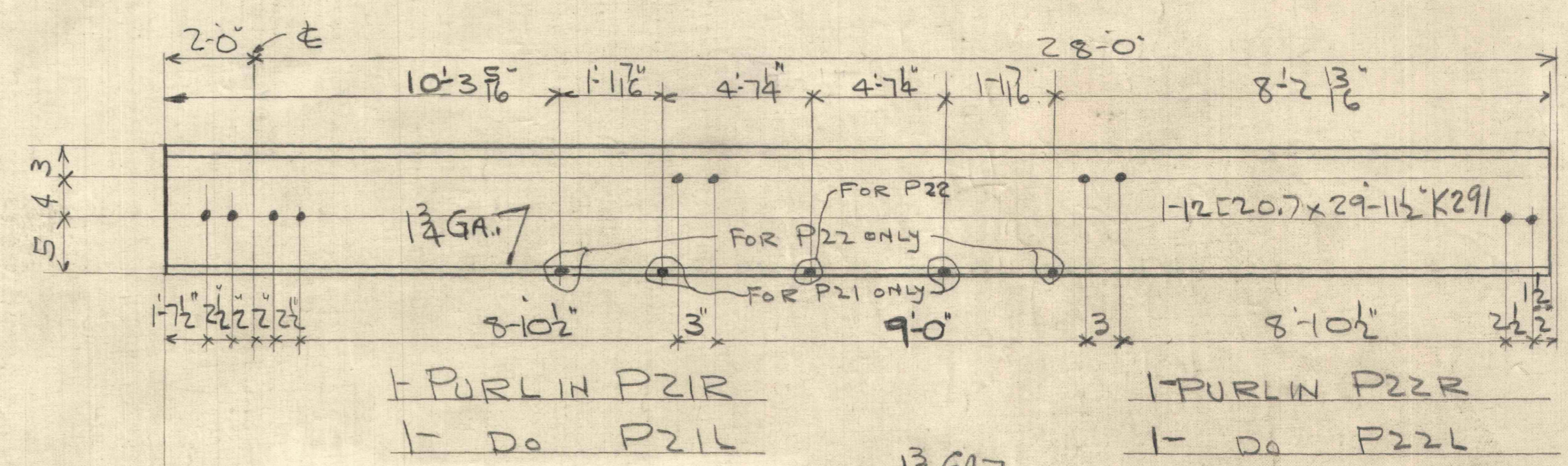
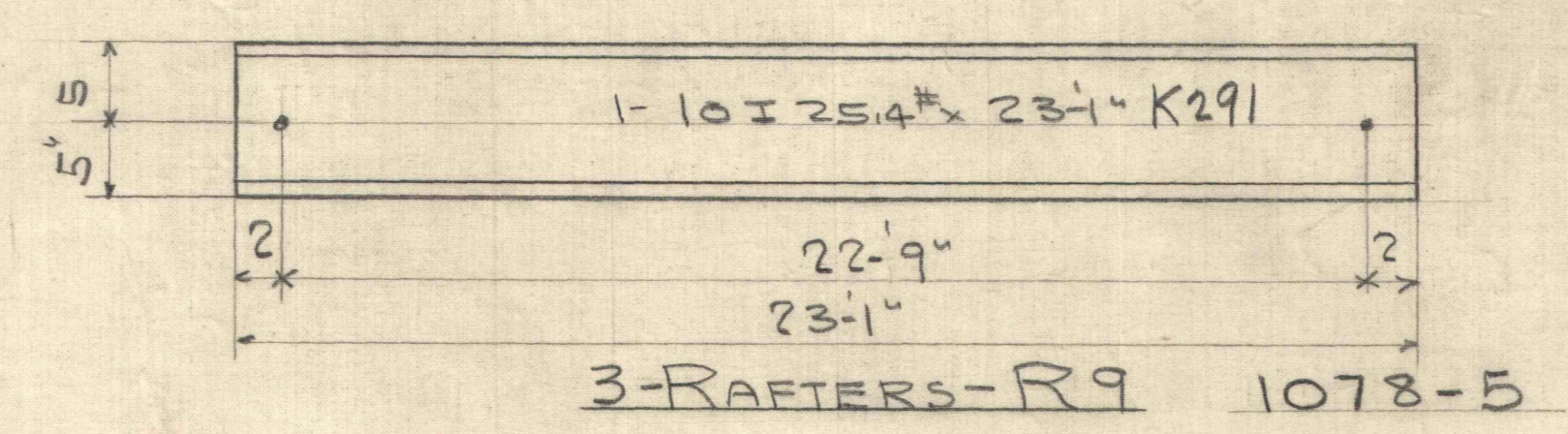
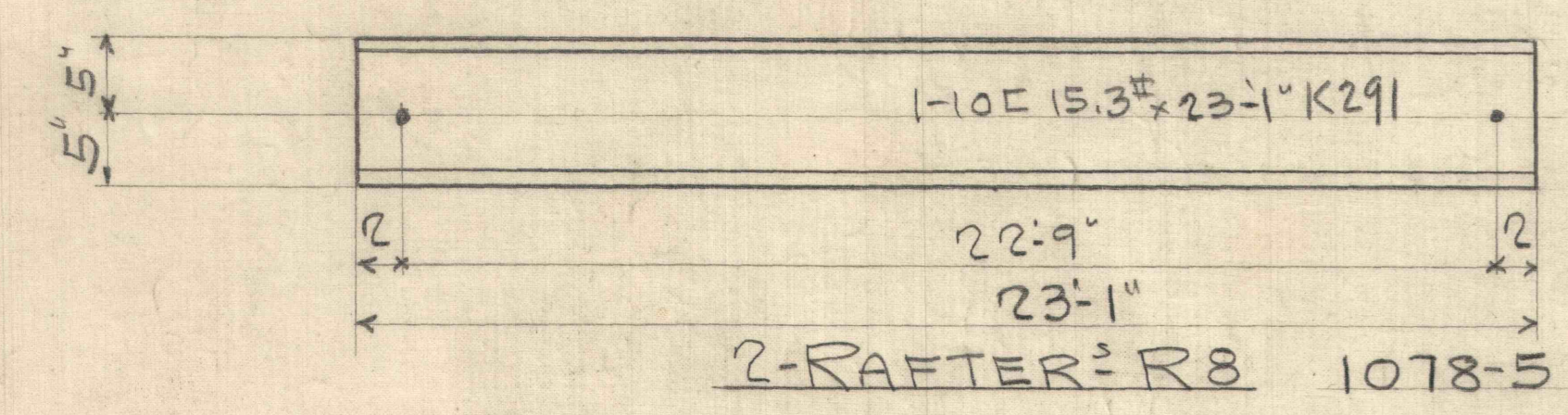


- 1- RAFTER - R10
- 1- D_o - R11
- 1- D_o - R12
- 1- D_o - R13
- 1- D_o - R14
- 1- D_o - R15
- 1- D_o - R16
- 1- D_o - R17
- 1- D_o - R18
- 1- D_o - R19

(1078-5)



(M27)
 2-1 3/4 x 4 x 8 x 8 1/2
 2 1/2 G.O.S.L.



JONES & LAUGHLIN STEEL CORPORATION
 KEYSTONE DEPT.
 FOR VESTA COAL CO. - FLOREFFE PA.
 JOB MACHINE SHOP
 DETAILS OF BRACIN - PURLINS - RAFTERS

MADE WR. DATE 7-14-30 TRACED DATE
 CH'K'D BY R DATE REVISID
 RIVETS 3/4" OPEN HOLES 1 1/2" Holes
 PAINT
 INSPECTION

SHEET No. E2 ORDER NO. 1078-5, & 6.

DRAWING
 Total D'w'g's. BILL SHT. #5-dash 5
 #8-dash 6 Sanborn 7/24
 FILED IN DRAWER NO. 26.