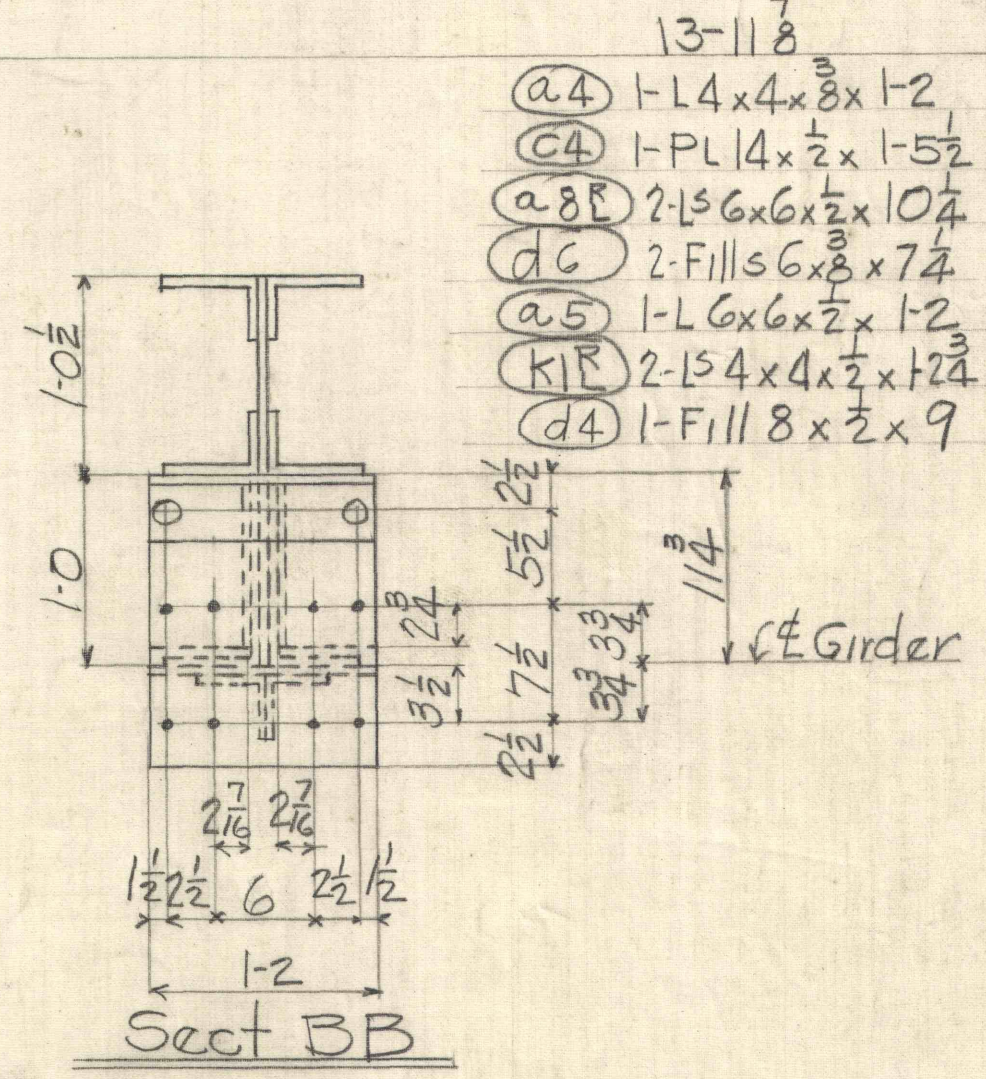


Section A

- (C1) 1-PL 18x4x2-10 1/4
- (C2) 2-L6x6x2x1-10
- (C3) 2-Fills 6x8x1-4
- (C4) 1-L6x4x1/2x1-6
- (C5) 1-L6x4x1/2x1-6
- (C6) 2-PL 18x8x1-0 For C1 to C5
- (K1) 1-PL 18x8x1-0 For CG
- (K2) 1-PL

- One Column C1
  - One do C2
  - One do C3
  - One do C4
  - One do C5
  - One do C6
- } Alike



Section B

- (A1) 1-L4x4x3/8x1-2
- (A2) 1-PL 14x2x1-5 1/2
- (A3) 2-L6x6x2x10 1/4
- (A4) 2-Fills 6x8x7 1/4
- (A5) 1-L6x6x2x1-2
- (K1) 2-L54x4x1/2x12 1/2
- (K2) 1-Fill 8x2x9

DRAWING A2

Total D'w'g's. BILL SHT. 2

JONES & LAUGHLIN STEEL CORPORATION  
KEYSTONE DEPT.

FOR Vesta Coal Co Florence Pa.  
JOB Maching Shop  
DETAILS OF Columns

MADE DTR DATE TRACED DATE  
CH'K'D W.H. DATE 7/18/30 REVISED  
RIVETS 30 OPEN HOLES 18 unless noted  
PAINT One Coat

INSPECTION  
SHEET No. A2 ORDER NO. 1078-1

FILED IN DRAWER NO. 26.

7/2/30