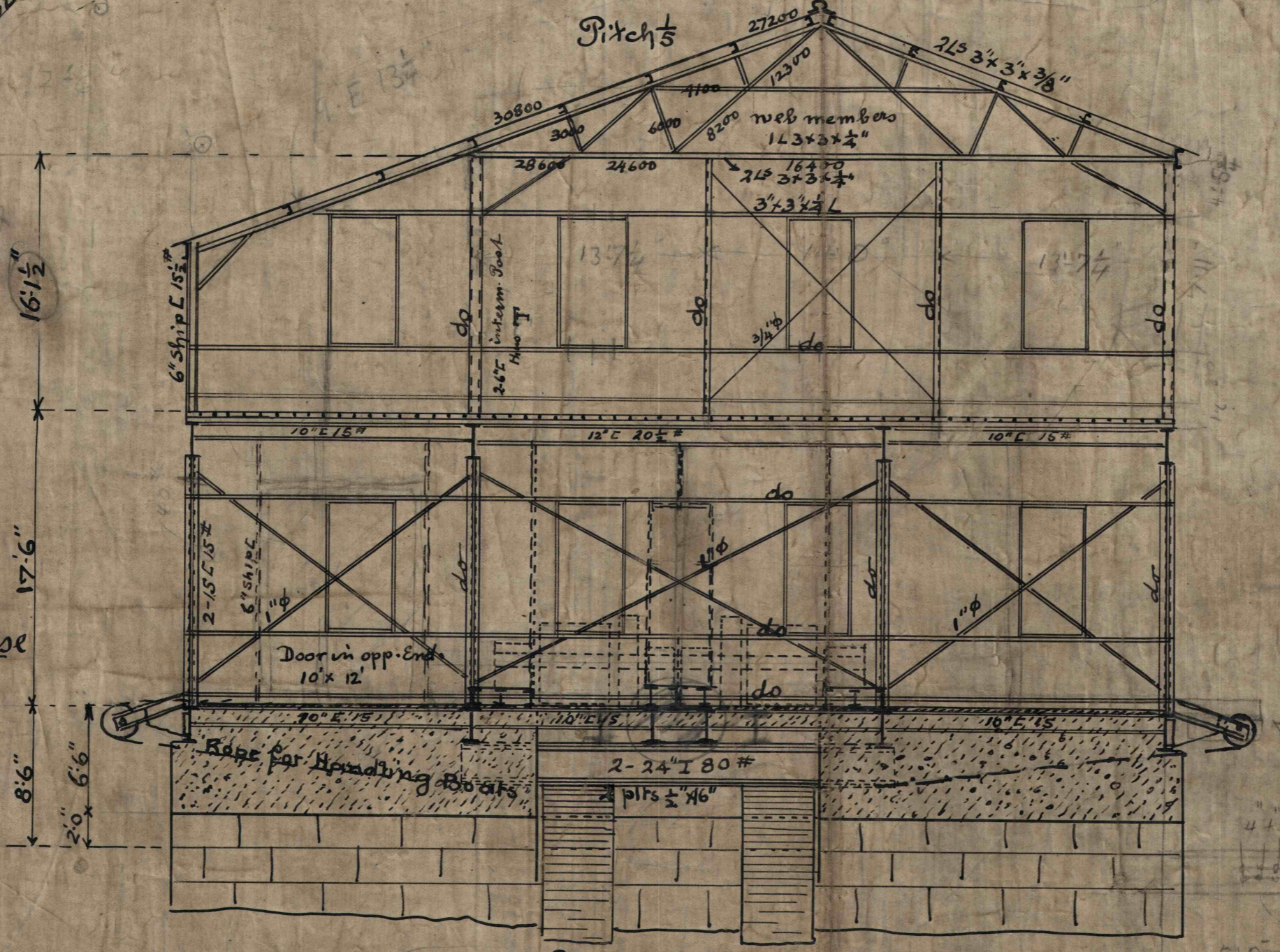
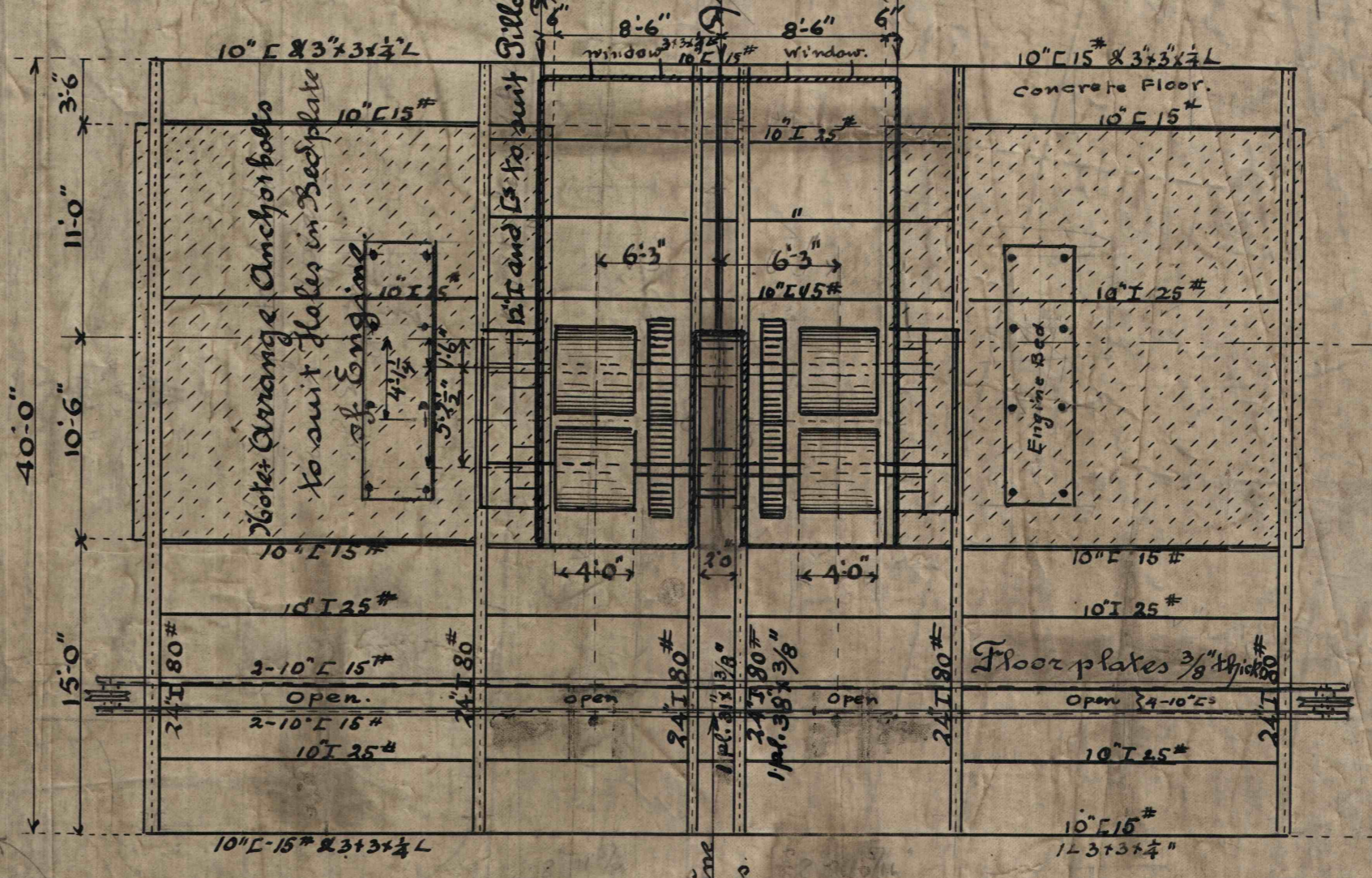


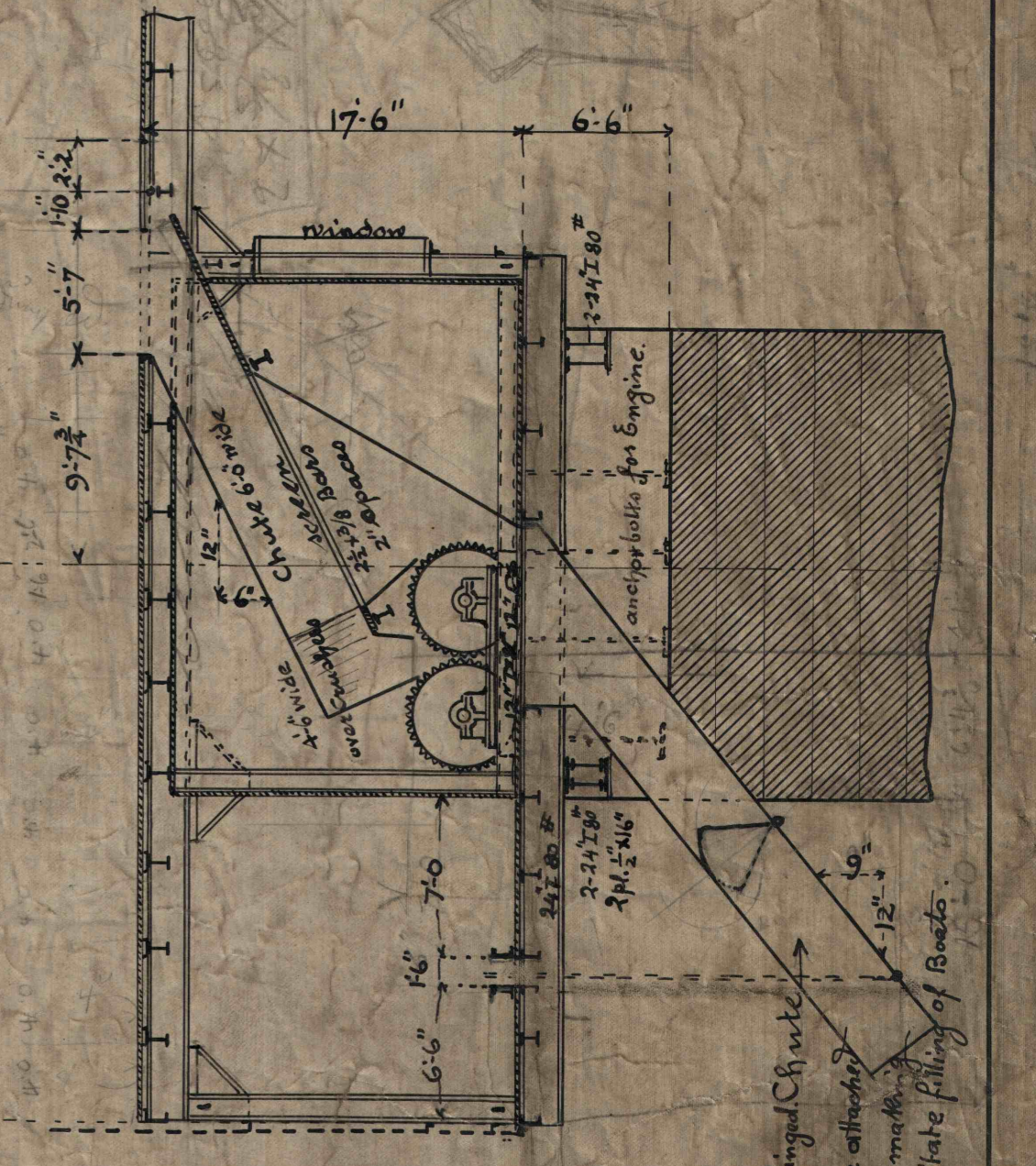
Plan showing
Upper Floor of Tipple House
and Floor of 132'-0" Span



End Elevation

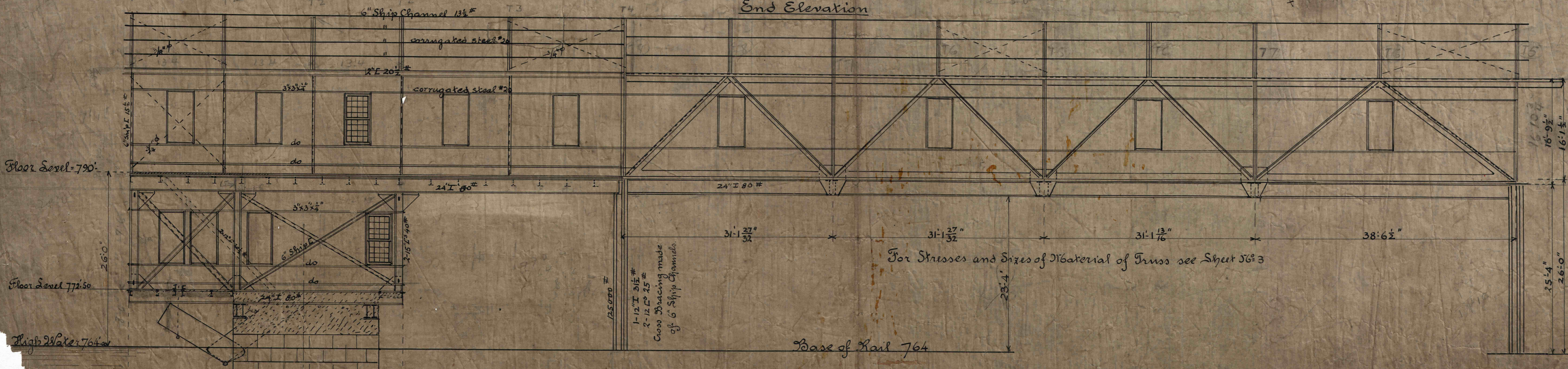


Plan of Lower Floor



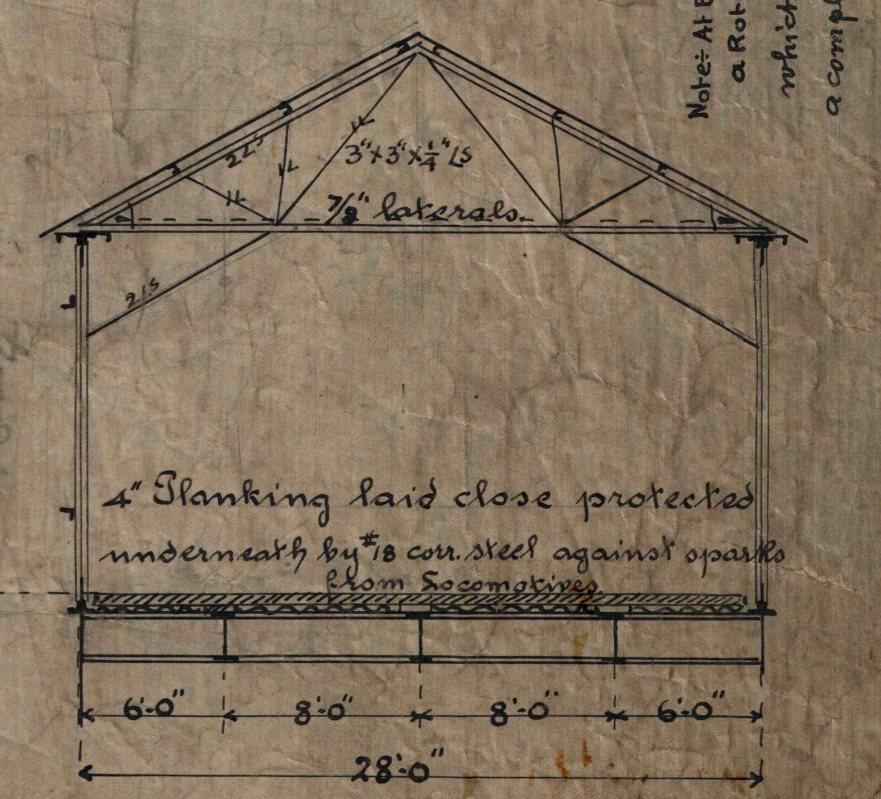
Cross Section Thigh
Centre of Pier.

Water at Bottom of Hinged Gate
a Rotary Spoon Chute will be attached
which will swing around water
a complete circle to facilitate filling of Barge.



Side Elevation

For Strusses and Sizes of Material of Truss see Sheet 363



Proposed
Coal Tipple & Trestle
for Vista Coal Co.
of California Pa.

Jones & Laughlin Ltd.
August 9th 1901
Sheet No. 2.
#27
DRAWER NO. 27

ORDER N° 1041

Barge at highest Water operates - 75' 0"
full = 72' 50"