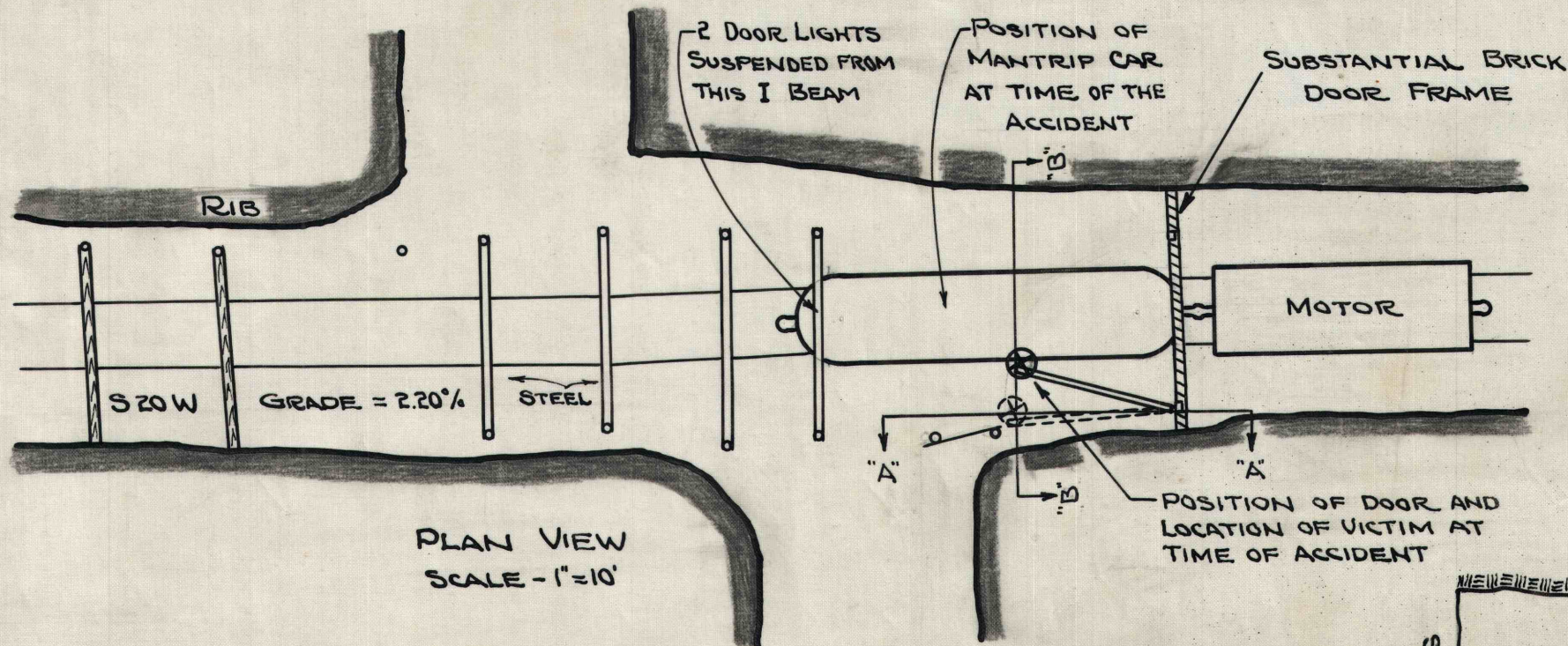


GENERAL PLAN  
SCALE 1" = 400'

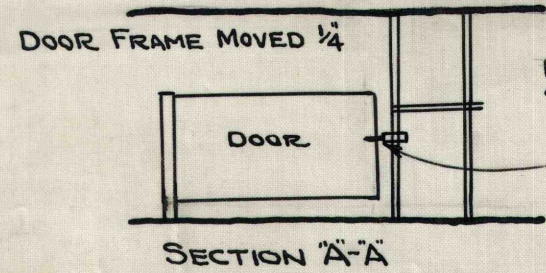


PLAN VIEW  
SCALE - 1" = 10'

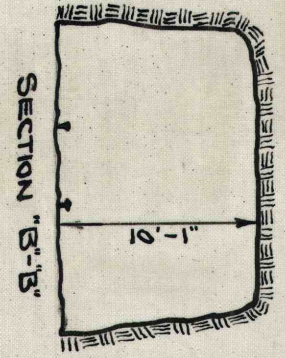
**FATALITY**

VICTIM - WILLIAM J. B. HINES, TIMBERMAN,  
WORKING AS EXTRA BRAKEMAN CK. No. 2075  
MOTORMAN - JOE SABONA CK. No. 2058  
PLACE - 28 FACE ENTRY AT FIRST LOCK DOOR  
OUTBY 14 BUTT.  
TIME - 2:45 P.M. AUG. 9, 1947

EXPLANATION - MOTOR AND MANTRIP CAR APPROACHED  
CLOSED WOOD DOOR. MOTORMAN STOPPED TRIP AND  
VICTIM WALKED FORWARD AND OPENED DOOR. MOTOR-  
MAN STATED HE TOLD VICTIM TO LEAVE DOOR OPEN.  
APPARENTLY VICTIM THOUGHT HE HAD DOOR PROPERLY  
LATCHED AND STARTED TO CLIMB INTO SECOND OPENING  
FROM FRONT END OF MANTRIP CAR WHILE CAR WAS  
MOVING. DOOR CAME LOOSE FROM LATCH AND  
STARTED TO CLOSE CATCHING AND CRUSHING VICTIM  
BETWEEN DOOR AND CAR.



KEEPER = 3 1/2" PAST POST  
SLIDE = 9 1/2" PAST POST  
WHEN OPENED.  
KEEPER HAD HOLD ON DOOR  
1/2" BEFORE ACCIDENT.  
KEEPER HOLD 1/4" AFTER  
ACCIDENT



- (X) VICTIM FOUND HERE
- o POST
- ▨ WOOD CROSS BAR
- ▬ STEEL CROSS BAR

JONES & LAUGHLIN STEEL CORP. VESTA COAL DIVISION CALIFORNIA, PA.		
MINE No. 4 - WILLIAM J. B. HINES FATALITY - 28 FACE ENTRY		
DR. G. H. E.	DATE: AUG 12, 1947	D-1011
TR. E. L. B.	SCALE - AS SHOWN	