
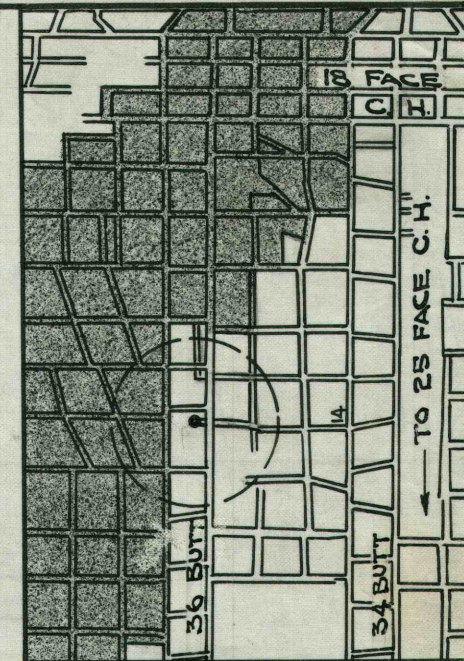
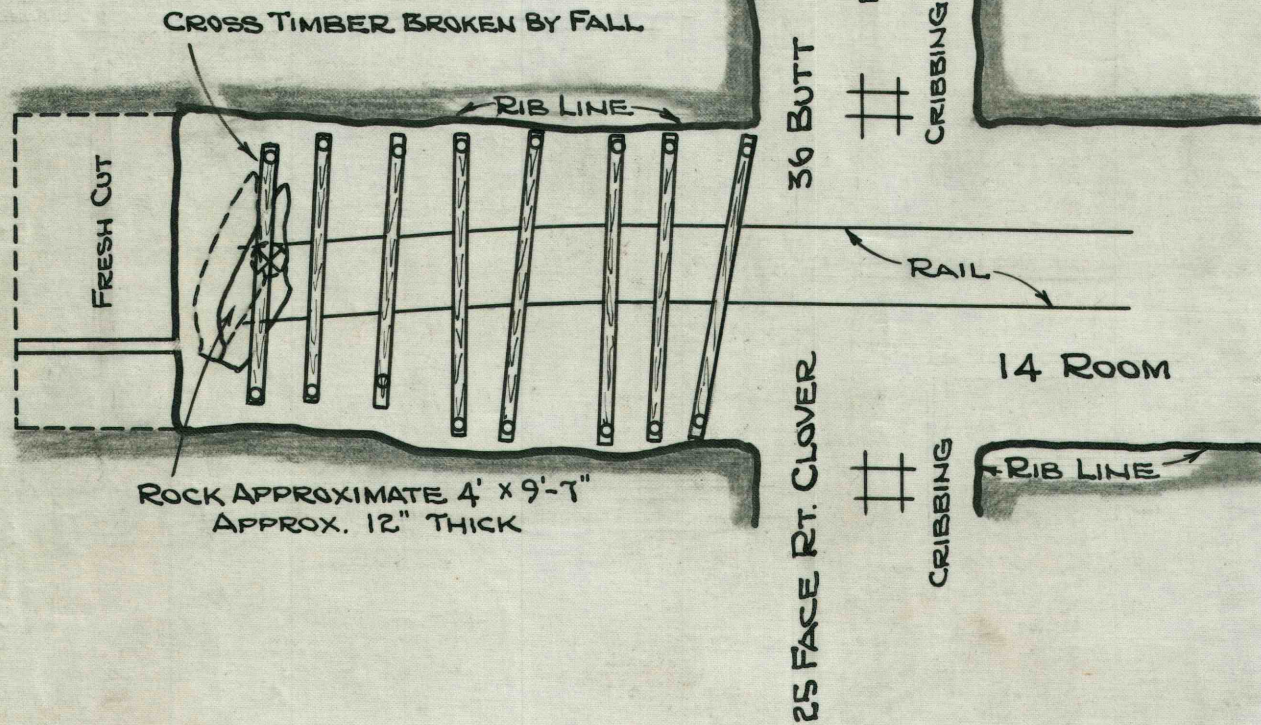


⊗ VICTIM FOUND  
 ○ POST  
 WOOD CROSS BAR

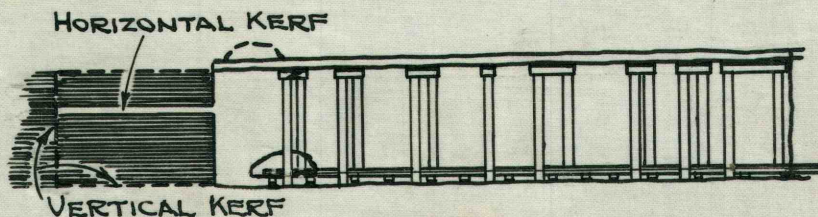
PLAN VIEW  
 SCALE 1" = 10'



GENERAL PLAN  
 SCALE 1" = 400'

VICTIM - LLOYD MURPHY - SHOTFIRER  
 CHECK NO. 145T  
 TIME - AUG. 27, 1948; 9:00 P.M.  
 PLACE - NO. 14 ROOM, NO. 36 BUTT,  
 NO. 25 FACE, CLOVER HILL SECTION.

HELPER - PETER SUNGALI, CHECK NO. 1473  
 EXPLANATION - MURPHY AND HIS HELPER HAD ENTERED  
 THE WORKING PLACE, WHICH HAD BEEN PREVIOUSLY  
 CUT ABOUT TWO FEET BELOW THE TOP OF THE COAL,  
 SHEARED NEAR THE LEFT RIB AND DRILLED FOR  
 SHOOTING. THE DECEASED AND HIS HELPER WERE  
 TAMPING THE CENTER BOTTOM HOLE WHICH WAS  
 THE FIRST TO BE SHOT, WHEN A PIECE OF ROCK  
 FELL FROM BETWEEN THE FACE AND JUST OVER THE FIRST  
 CROSS BAR.



LONGITUNAL SECTION

JONES & LAUGHLIN STEEL CORP.  
 VESTA COAL DIVISION  
 CALIFORNIA, PA.

MINE NO. 4 - LLOYD MURPHY  
 FATALITY - 14 RM. 36 BT. 25 FACE C.H.

DR. A.V.H.	DATE - AUG. 30, 1948	D-1057
TR. E.L.B.	SCALE AS SHOWN	