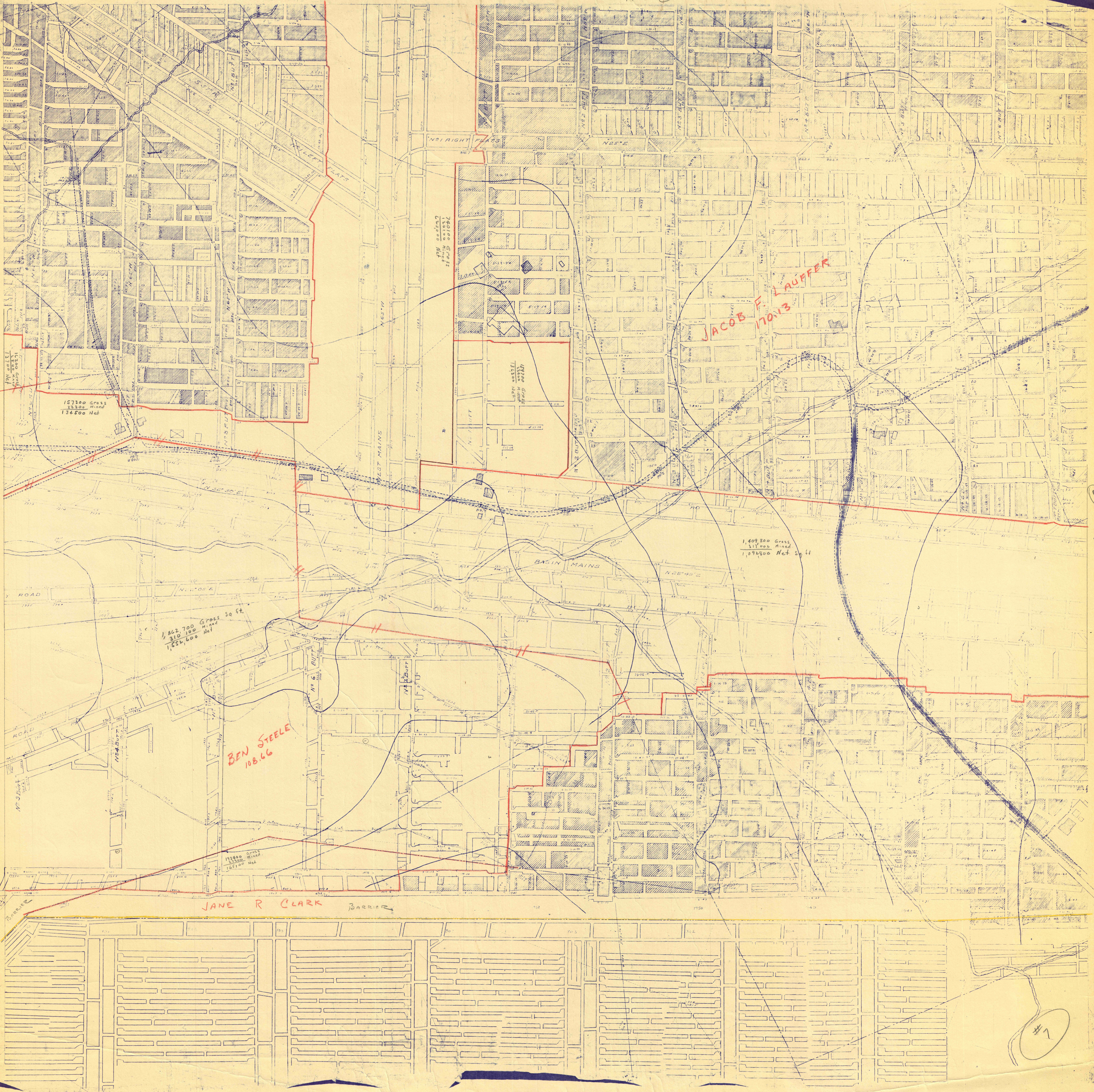


FIT to 3

FIT to 2



157300 Gross
22500 Mined
134800 Net

740100 Gross
100000 Mined
640100 Net

JACOB F. LAUFFER
170113

1,409,800 Gross
317,000 Mined
1,092,800 Net

1,862,700 Gross
310,100 Mined
1,552,600 Net

BEN STEELE
10866

JANE R CLARK

BARRIER

#7

FIT to 6

FIT to 8