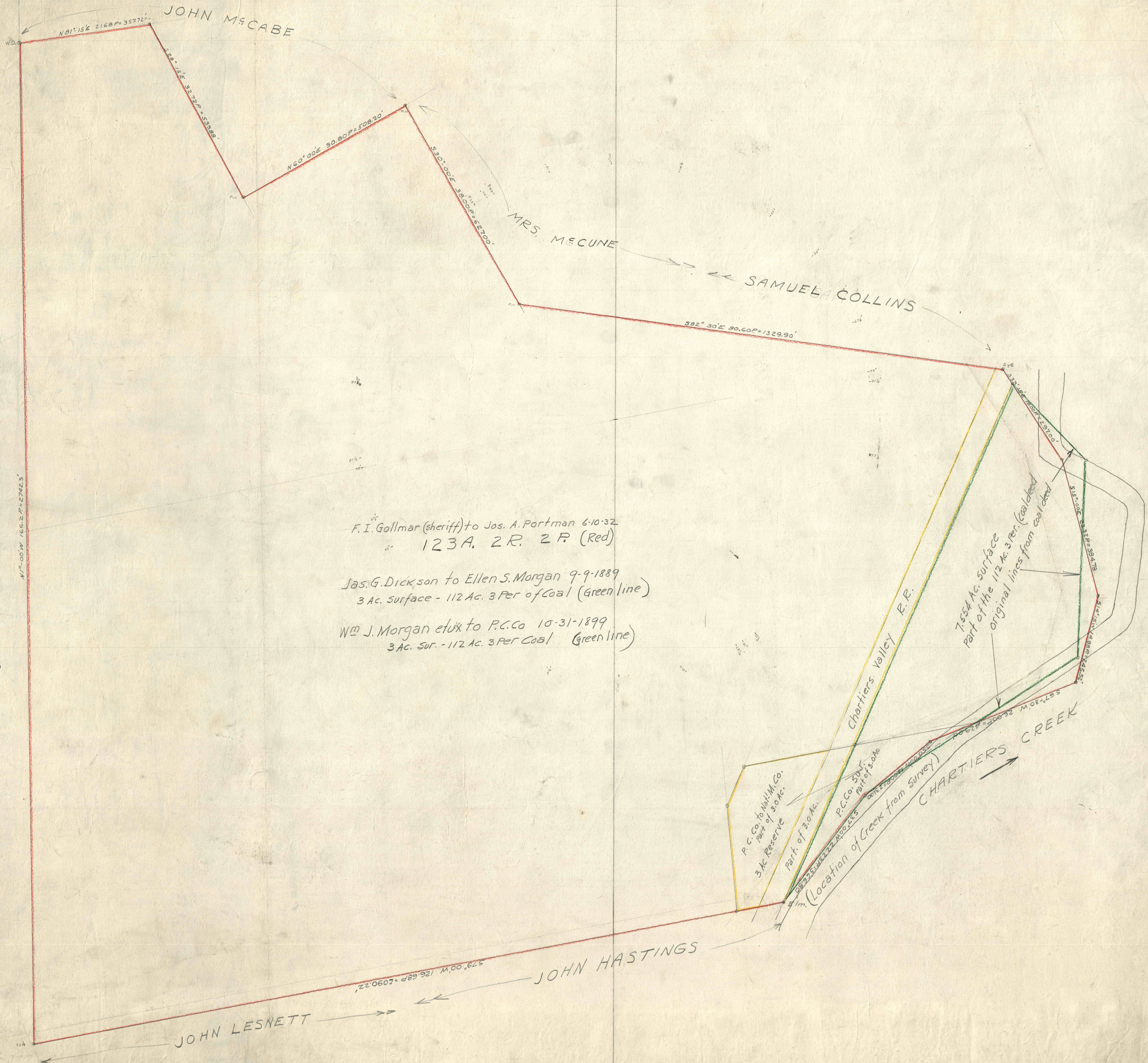


JOHN LESNETT

N 0° 00' W 166.24' = 2742.3'



JOHN M'CABE

MRS. M'CUNE

SAMUEL COLLINS

JOHN HASTINGS

JOHN LESNETT

F. I. Gollmar (sheriff) to Jos. A. Portman 6-10-32  
123 A. 2 R. 2 P. (Red)

Jas. G. Dickson to Ellen S. Morgan 9-9-1889  
3 Ac. surface - 112 Ac. 3 Per of Coal (Green line)

Wm J. Morgan et ux to P.C. Co 10-31-1899  
3 Ac. Sur. - 112 Ac. 3 Per Coal (Green line)

P. C. Co. by Mt. M. Co.  
3 Ac. Reserve

Part of 30 Ac.

P.C. Co. 50 Ac.  
Part of 100 Ac.

(Location of Creek from survey)

7.554 Ac. surface  
Part of the 112 Ac. 3 Per. (Coal bed)  
original lines from coal bed

CHARTIERS CREEK

Charliers Valley R.R.

S 79° 00' W 126.68 P = 2090.22'

S 82° 30' E 80.60 P = 1329.90'

N 81° 15' E 2168 P = 3577.2'

S 82° 15' E 32.72 P = 598.8'

N 60° 00' E 30.80 P = 508.20'

S 30° 00' E 30.00 P = 327.00'

S 32° 30' E 20.00 P = 267.00'

S 15° 00' E 33.8 P = 54.78'

S 15° 00' E 48.8 P = 74.54'

S 66° 17' E 20.00 P = 37.00'

S 57° 43' E 29.5 P = 52.75'