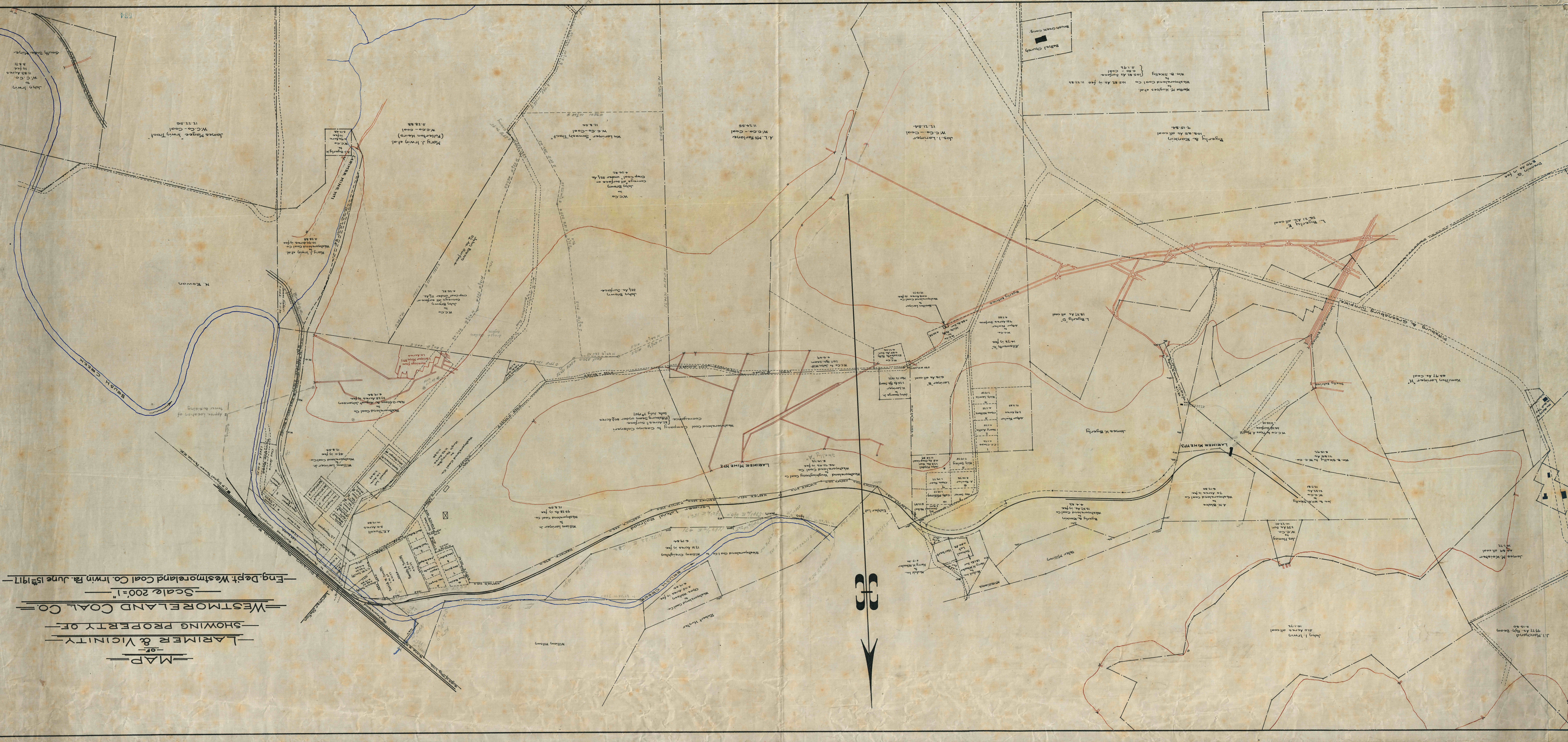


MAP  
OF  
LARIMER & VICINITY  
SHOWING PROPERTY OF  
WESTMORELAND COAL CO.  
Scale 200' = 1"  
Eng. Dept. Westmoreland Coal Co. Irwin Pa. June 15<sup>th</sup> 1917



584

John Irwin  
W.C. Co.  
1183 Acres  
10.75  
2.811  
South Side Mine

James Rogee Irwin Tract  
W.C. Co. - Coal  
11,72.50

Mary J. Irwin et al.  
(Fullerton Heirs)  
W.C. Co. - Coal  
5,75.55

Wm Larimer Sweeney Tract  
W.C. Co. - Coal  
11,8.50

A.L. Richardson  
W.C. Co. - Coal  
11,74.55

Jos. J. Larimer  
W.C. Co. - Coal  
11,71.54

Dyerly & Stanton  
108.00 Ac. all coal  
11,15.54

Bethel Church

Maria H. Hughes et al.  
Westmoreland Coal Co.  
108.25 Ac. in fee  
11,17.55  
Wm. B. Shelly  
108.25 Ac. surface  
5.175

John Irwin et al.  
Westmoreland Coal Co.  
108.25 Ac. in fee  
11,17.55

John Irwin et al.  
Westmoreland Coal Co.  
108.25 Ac. in fee  
11,17.55

John Irwin et al.  
Westmoreland Coal Co.  
108.25 Ac. in fee  
11,17.55

John Irwin et al.  
Westmoreland Coal Co.  
108.25 Ac. in fee  
11,17.55

N. Rowan

John Brown  
21.45 Surface

John Brown  
21.45 Surface

L. Dyerly  
25.21 Ac. all coal

Hamilton Larimer  
25.21 Ac. Coal

Apex location of  
tower building

Westmoreland Coal Company  
188.00 Ac. in fee  
11,17.55

Westmoreland Coal Company  
188.00 Ac. in fee  
11,17.55

James H. Dyerly

W.C. Co. - Coal  
11,17.55

Wm. Larimer Jr.  
11.84 Ac. in fee

Wm. Larimer Jr.  
11.84 Ac. in fee

Wm. Larimer Jr.  
11.84 Ac. in fee

Wm. Larimer Jr.  
11.84 Ac. in fee

Wm. Larimer Jr.  
11.84 Ac. in fee

A.L. Richardson  
11.74.55

A.L. Richardson  
11.74.55

A.L. Richardson  
11.74.55

A.L. Richardson  
11.74.55

A.L. Richardson  
11.74.55

John Irwin et al.  
108.25 Ac. in fee  
11,17.55

John Irwin et al.  
108.25 Ac. in fee  
11,17.55

John Irwin et al.  
108.25 Ac. in fee  
11,17.55

John Irwin et al.  
108.25 Ac. in fee  
11,17.55

John Irwin et al.  
108.25 Ac. in fee  
11,17.55

John Irwin et al.  
108.25 Ac. in fee  
11,17.55

John Irwin et al.  
108.25 Ac. in fee  
11,17.55

John Irwin et al.  
108.25 Ac. in fee  
11,17.55

John Irwin et al.  
108.25 Ac. in fee  
11,17.55

John Irwin et al.  
108.25 Ac. in fee  
11,17.55

John Irwin et al.  
108.25 Ac. in fee  
11,17.55

John Irwin et al.  
108.25 Ac. in fee  
11,17.55

John Irwin et al.  
108.25 Ac. in fee  
11,17.55

John Irwin et al.  
108.25 Ac. in fee  
11,17.55

John Irwin et al.  
108.25 Ac. in fee  
11,17.55

John Irwin et al.  
108.25 Ac. in fee  
11,17.55

John Irwin et al.  
108.25 Ac. in fee  
11,17.55

John Irwin et al.  
108.25 Ac. in fee  
11,17.55

John Irwin et al.  
108.25 Ac. in fee  
11,17.55

John Irwin et al.  
108.25 Ac. in fee  
11,17.55

John Irwin et al.  
108.25 Ac. in fee  
11,17.55

John Irwin et al.  
108.25 Ac. in fee  
11,17.55

John Irwin et al.  
108.25 Ac. in fee  
11,17.55

John Irwin et al.  
108.25 Ac. in fee  
11,17.55

John Irwin et al.  
108.25 Ac. in fee  
11,17.55

John Irwin et al.  
108.25 Ac. in fee  
11,17.55

John Irwin et al.  
108.25 Ac. in fee  
11,17.55

John Irwin et al.  
108.25 Ac. in fee  
11,17.55

John Irwin et al.  
108.25 Ac. in fee  
11,17.55

John Irwin et al.  
108.25 Ac. in fee  
11,17.55

J.J. Macdonald  
117.75 Ac. in fee  
11,17.55

James M. Keister  
10.75 Ac. in fee  
11,17.55

James M. Keister  
10.75 Ac. in fee  
11,17.55

James M. Keister  
10.75 Ac. in fee  
11,17.55

