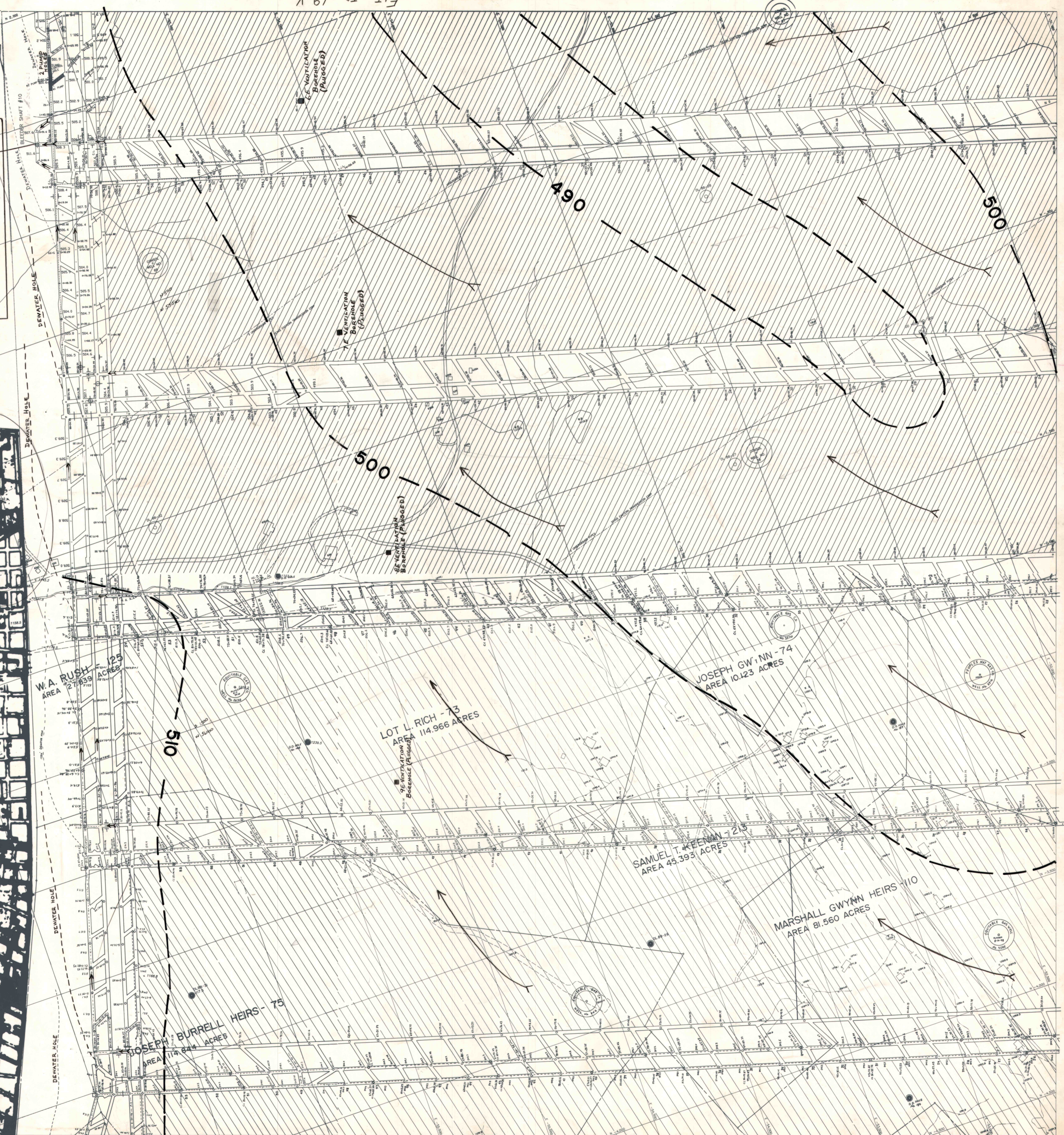
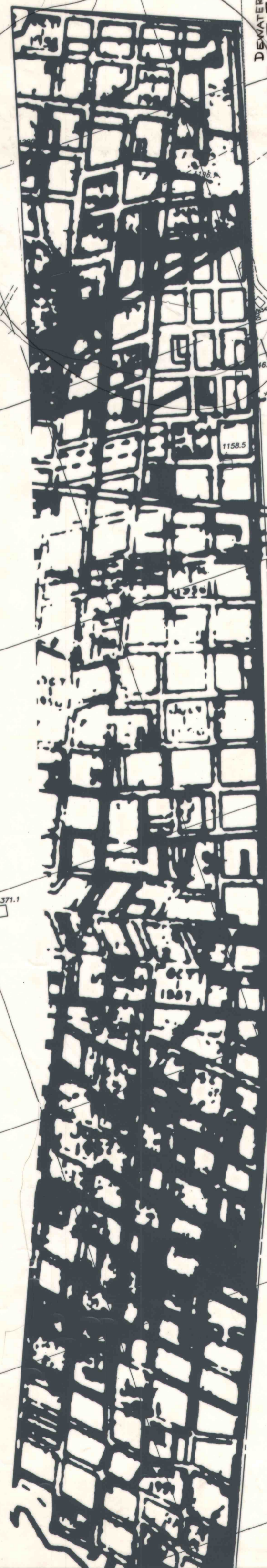


<b>AIR SHAFT #10</b>	
6' DIA.	
INTAKE 6160 CFM	SURFACE ELEV. 1083.00'
0.0 % CH <sub>4</sub>	BOTTOM COAL EL. 508.00'
	DEPTH 575.00'
<b>FANS</b>	
	<b>ELECTRIC</b>
	<b>DIESEL</b>
(CURRENTLY OFF)	(OFF)
SIZE: 81"	81"
TYPE: CENTRIFUGAL	CENTRIFUGAL
MODEL: AF 1037	AF 1037
MFR: ROBINSON INDUSTRIES INC	
OPERATING WGT: —	—
HP: 500	500
RPM: 880	880
FAN OPENING: —	—



Fit to 22 V