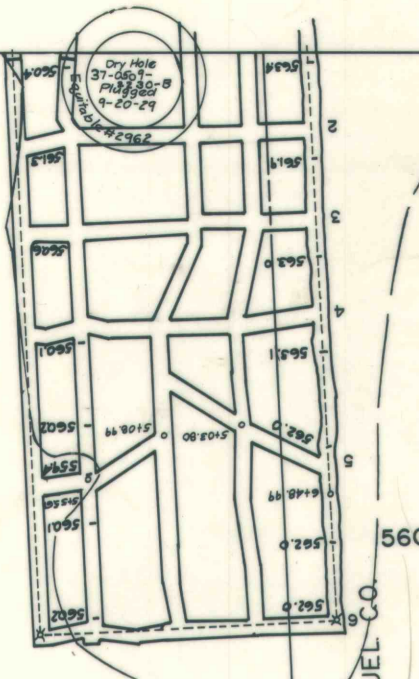
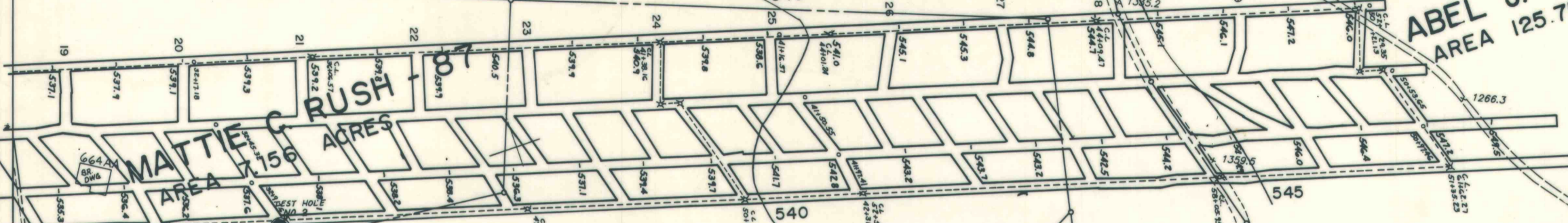


REX MOREDOCK - 112
AREA 157.163 ACRES

ABEL J. SHARPBACK - 915
AREA 125.758 ACRES

HENRY WATTERS - 928
AREA 110.771 ACRES



CONVEYED BY CRUCIBLE FUEL CO.
H.C. FRICK COKE CO.
E.F. 7934

(PARCEL II)
10.095

-926-
J.E. WEAVER
4.220 ACS.

927
CHAS. G. WATTERS
9.544 ACRES

ELIZA M. CARTER - SURFACE
AREA 23.317 ACRES

J.F. BAILEY - 925
13.748 ACRES

JESSE K. BAILEY - 924
AREA 23.606 ACRES

J.E. WEAVER - 89
AREA 82.463 ACRES

JOHN F. BAILEY - 90
AREA 45.442 ACRES

JESSE K. BAILEY - 91
AREA 11.474 ACRES

923
WILLIAM H. BAILEY
&
ELLIS B. BAILEY
AREA 22.263 ACRES

(PARCEL III)
7.891 ACS.

RICHARD EWART - 97
AREA 24.408 ACRES

MARY A. DAVIS - 113
AREA 18.495 ACRES

WILLIAM H. BAILEY - 92
AREA 18.991 ACRES

ALBERT WEAVER - 98
AREA 74.862 ACRES

A.L. RICH - 95
AREA 91.095 ACRES

MILTON BAILEY - 93
AREA 127.348 ACRES

-159-
5.411 ACS

CONVEYED BY CRUCIBLE FUEL CO.
H.C. FRICK COKE CO.
E.F. 7934

(PARCEL IV)
16.529 ACS.

144
JOHN F. BAILEY
AREA 104.939 ACRES

NEMACOLIN MINE
L. TV STEEL