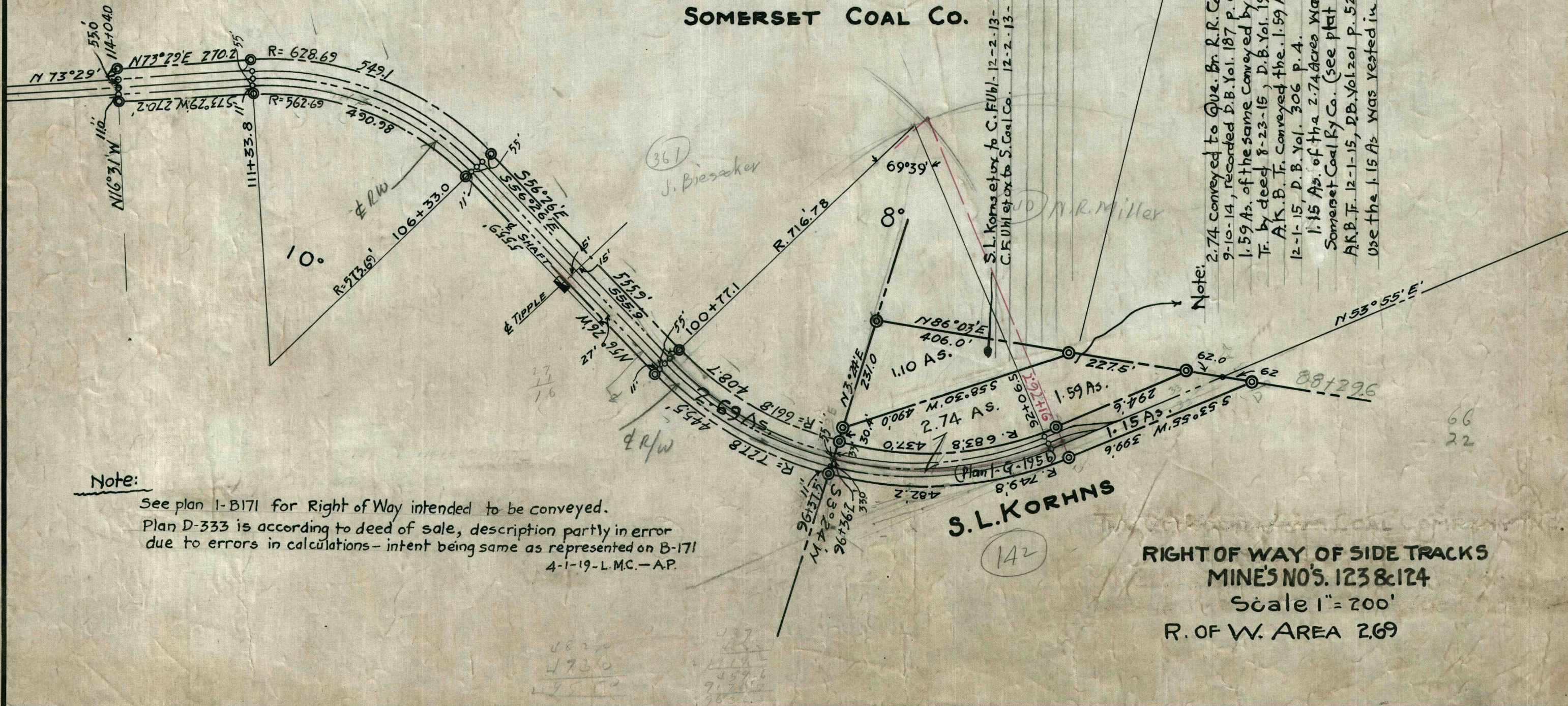


Note: 2.69 As. R/w from J. Biesecker Tract is parcel #3 in deed from Somerset Coal Co. to A.K. Bowles, Tr. dated 8-10-15, recorded in D.B. Vol. 198 page 414. Wherein right to use for Tipples, Transmission Lines etc. is reserved to Coal Co. or assigns. A.K. B. Tr. conveyed the above, as parcel #3, to S.C. Ry. Co. in deed dated 12-1-15, recorded D.B. Vol. 201 p. 521.

SOMERSET COAL CO.



Note: 2.74 conveyed to Que. Br. R.R. Co. by S.L. Korhns etox 9-10-14, recorded D.B. Vol. 187 p. 624
 1.59 As. of the same conveyed by Q.B.R.R. Co. to A.K. Bowles Tr. by deed 8-23-15, D.B. Vol. 198 p. 422.
 A.K. B. Tr. conveyed the 1.59 As. to Somerset Coal Co. 12-1-15, D.B. Vol. 306 p. 4.
 1.15 As. of the 2.74 acres was conveyed to Somerset Coal Ry Co. (see plat 1-9-1956) by A.K. B. Tr. 12-1-15, D.B. Vol. 201 p. 528; no right to use the 1.15 As was vested in the Coal Co.

S.L. Korhns etox to C. F. Uhl - 12-2-13 - Vol. 188 p. 96. (1.07 As.)
 C. F. Uhl etox to S. Coal Co. 12-2-13 - Vol. 194 p. 126 (1.07 As.)

Note: See plan 1-B171 for Right of Way intended to be conveyed. Plan D-333 is according to deed of sale, description partly in error due to errors in calculations - intent being same as represented on B-171 4-1-19-L.M.C.-A.P.

**RIGHT OF WAY OF SIDE TRACKS
 MINE'S NO'S. 123 & 124
 Scale 1" = 200'
 R. OF W. AREA 2.69**