

PETER SPEICHER

Fit to 6

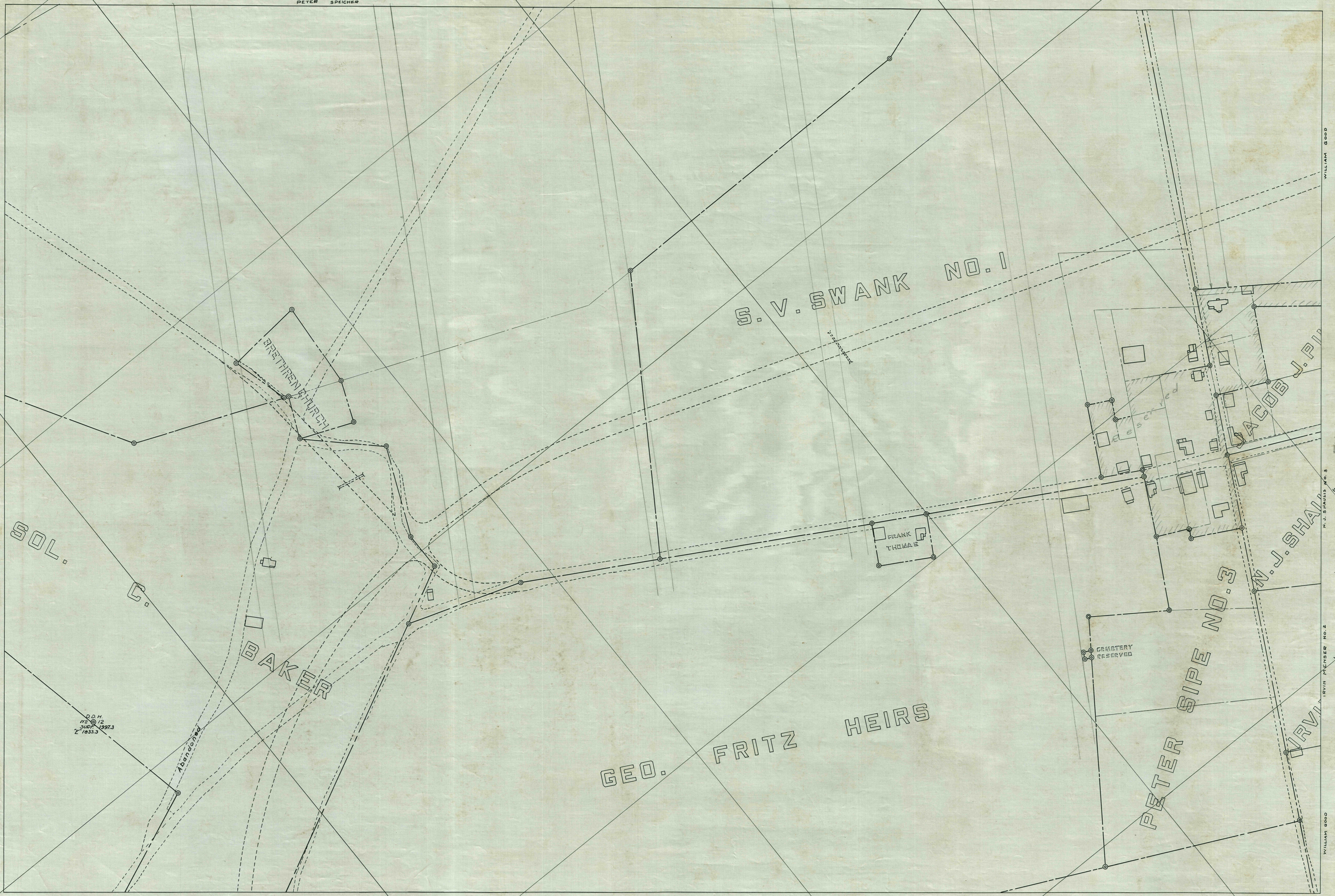
52000

51000

W 15000

S 22000

W 14000



SOL.

C.

BAKER

S.V. SWANK NO. 1

FRANK THOMAS

GEO. FRITZ HEIRS

PETER SIPE NO. 3

JACOB J. PI...

D.O.H.
112 0 12
3407 1997.3
1833.3

Abandoned

GEMETERY
RESERVED

IRVIN

WILLIAM GOOD

N.J. STANLEY NO. 3

IRVIN MEYER NO. 2

WILLIAM GOOD

Fit to 13

MINE 121 "E" #7