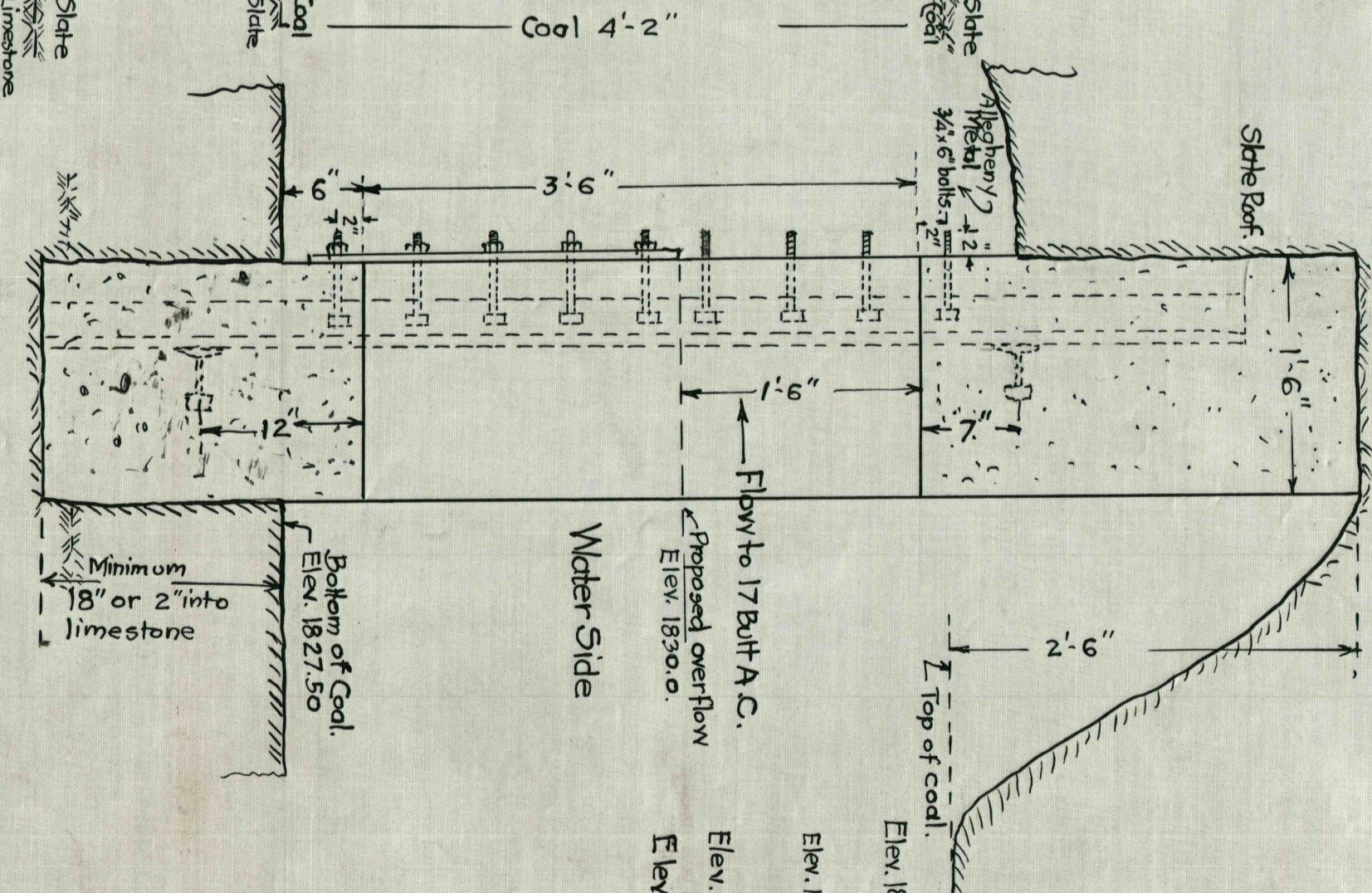
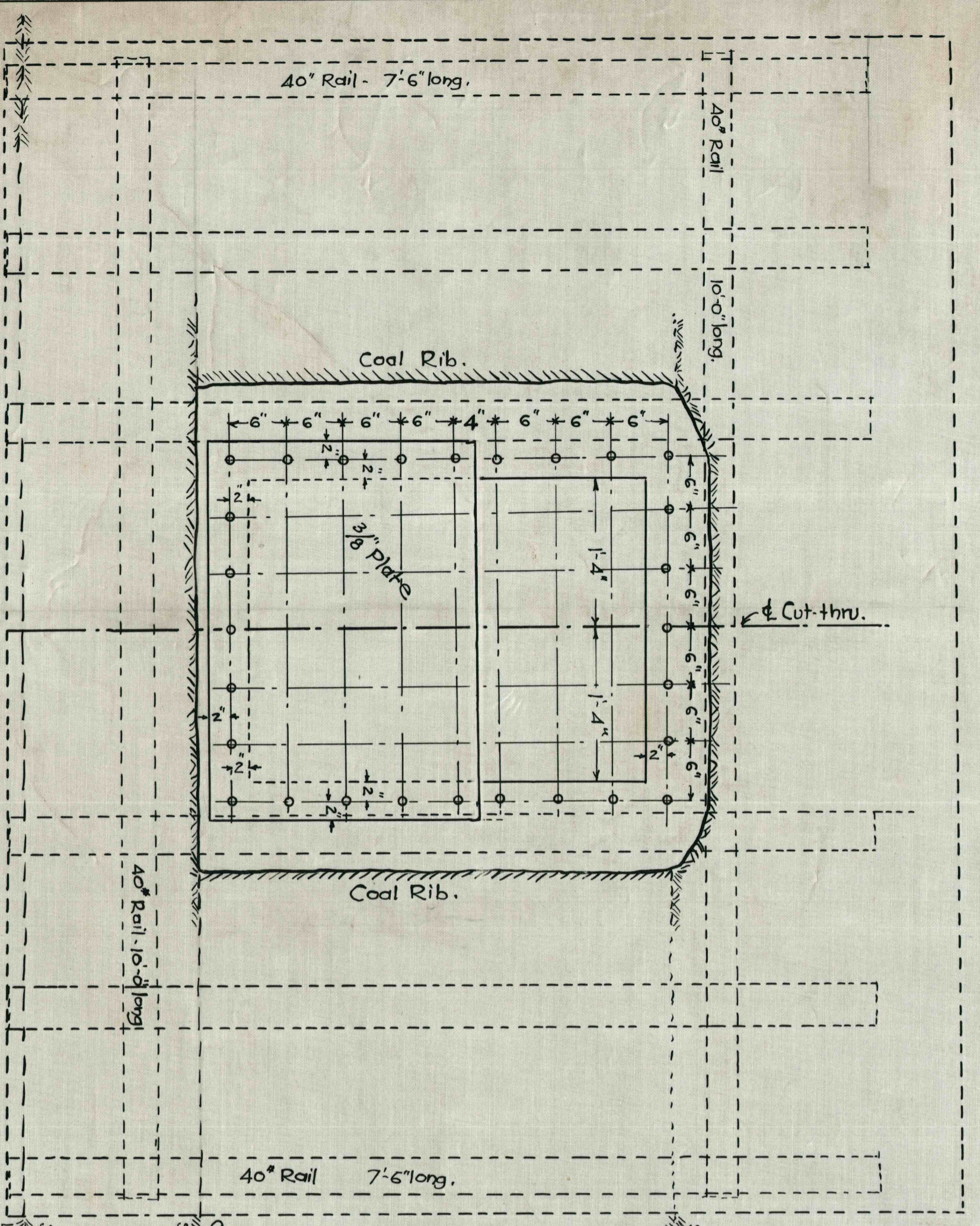
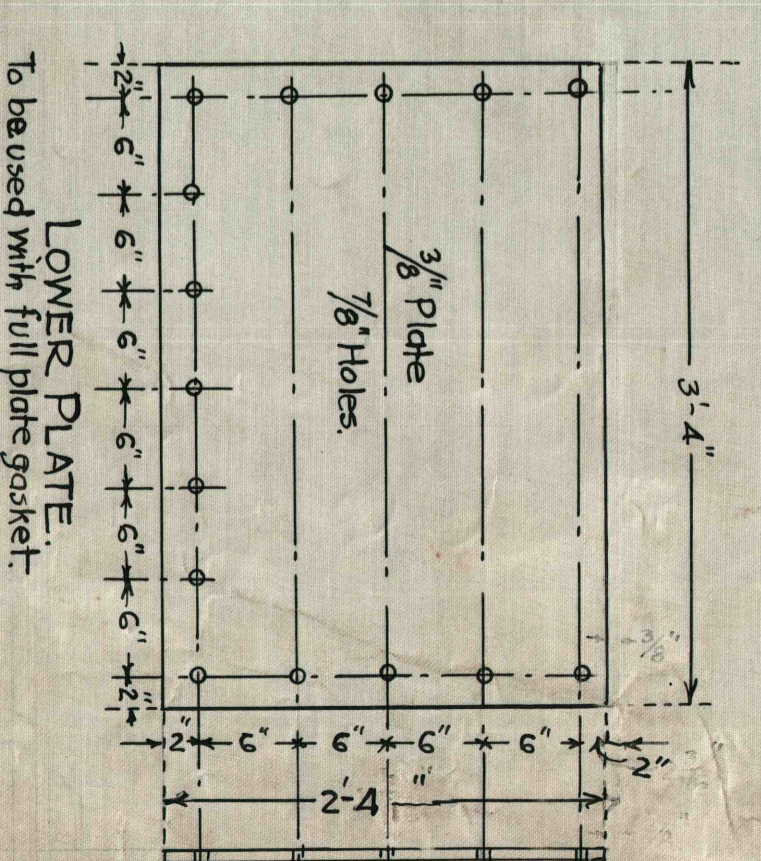
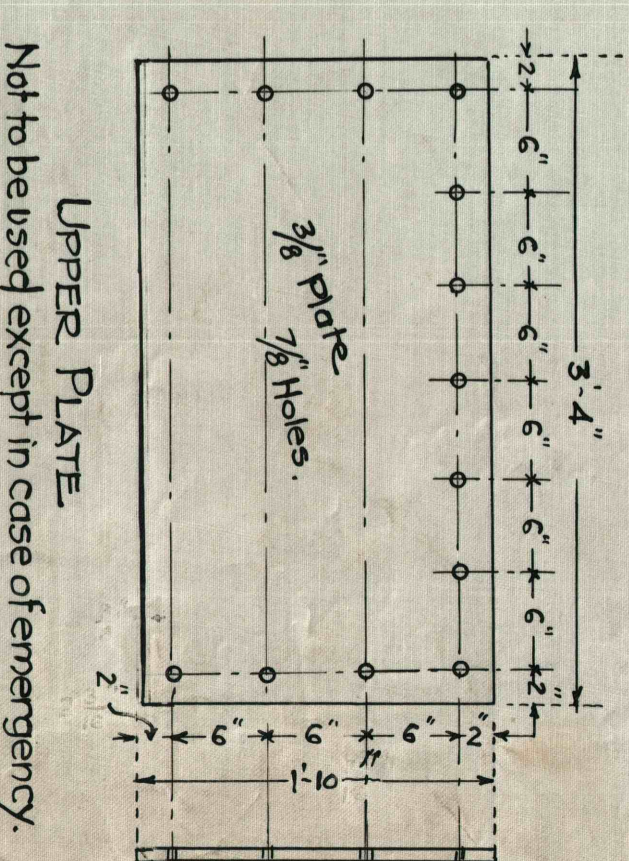


Consolidation Coal Co.
Mines 118-119 - Jenners, Pa
**FLOOD CONTROL FOR WATER IMPOUNDED
IN 3 & 4 FACE SECTIONS.**
Scale 1" = 1' 8-26-37 Engr. Dept. Pa. Div.

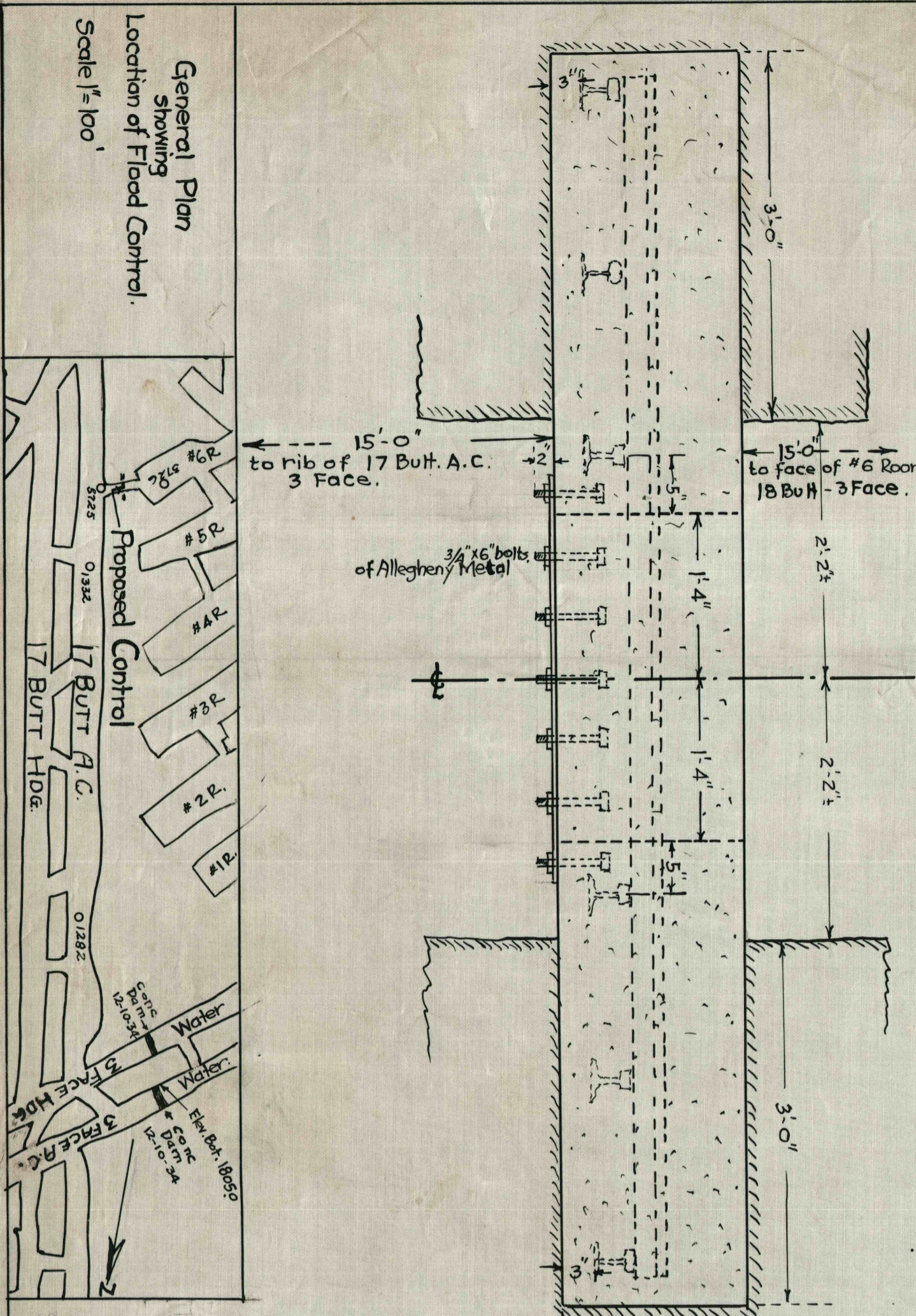


Elev. 1845.0 - Surface at old 6" Ramp Hole on 4 Face Hdg. 1100 ft. southwest of this dam.
Elev. 1835.0 - Bed of Queneparing Creek above old Hillsworth Coal Co. workings, 3500 ft. southwest of this dam.
Elev. 1825.0 - Bottom of Conc. Dams in 3 face, 450' N.W. of this dam.
Elev. 1840.0 - High water in Creek in this vicinity.



- BILL OF MATERIAL**
- 29 Sacks fresh cement
 - 3 N. Tons clean sharp sand
 - 5 N. Tons minus 2 1/2 Ferner sand stone (Do not use limestone)
 - 1-3/8" steel plate 40" x 28"
 - 1-3/8" " " 40" x 22"
 - 28-3/4" x 6" Allegheny Metal bolts with

Note: - Concrete to be 1:2:3 Mix.
3/4" x 6" Bolts with nuts to be Allegheny Metal.



General Plan
Showing
Location of Flood Control.
Scale 1" = 100'