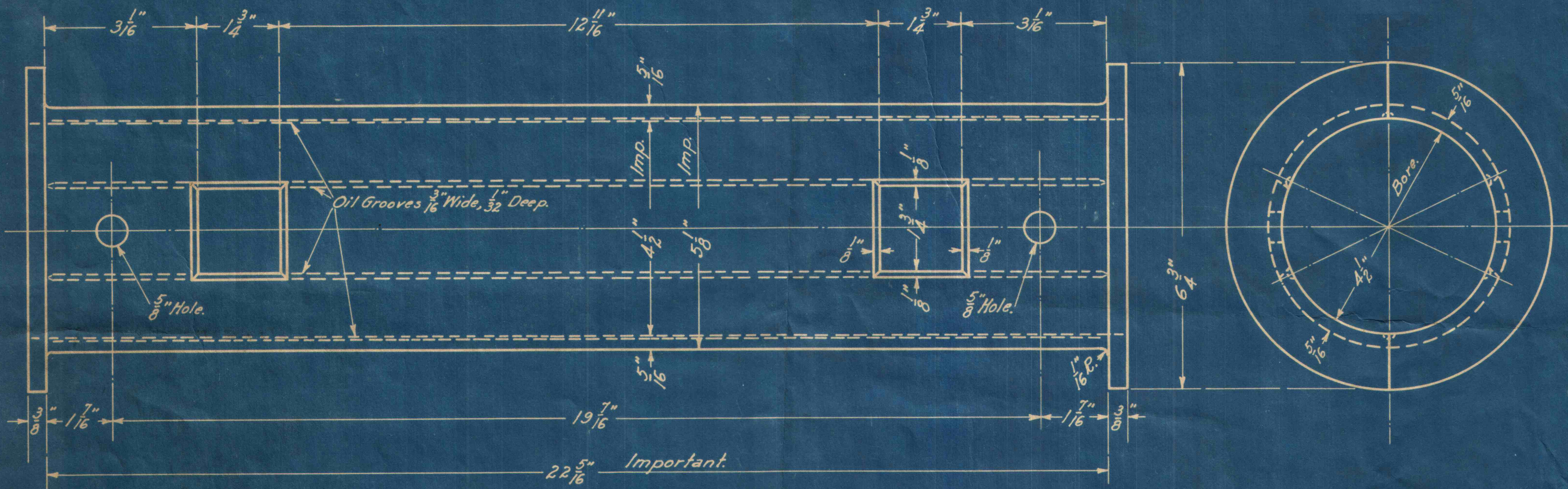


11-50



2-Required per Locomotive.

Note:-
 To be made of Cast Bronze, finished all over, and split on the center line. Both Halves alike.
 All Surfaces to be true, and Bore must be at Right Angles with Face of Flanges.

Composition:-
 80% Copper.
 10% Tin.
 10% Lead.

KEYSTONE MINING COMPANY, EAST BRADY, PA.	
AXLE LINERS FOR JEFFREY 10 TON LOCOMOTIVES. Having Type MH 110 Motors. Use on Loco's Nos. 5544, 3662.	
DRAWN.	DATE.
TRACED.	SCALE.
CHECKED.	REV.
APPR.	DWG. No. B-A-R.R.

DWG. 5-10

11-50