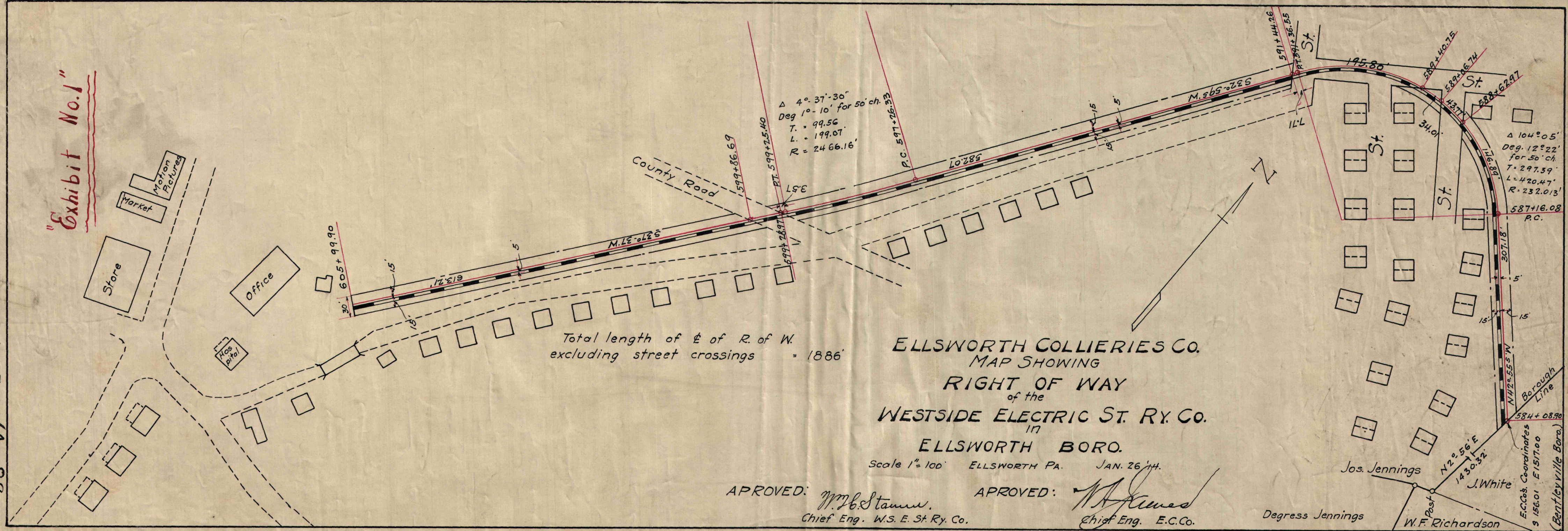


"Exhibit No. 1"

DWG. 12-75 AA 89



Total length of $\frac{1}{2}$ of R. of W. excluding street crossings = 1886'

ELLSWORTH COLLIERIES CO.
 MAP SHOWING
 RIGHT OF WAY
 of the
 WESTSIDE ELECTRIC ST. RY. CO.
 IN
 ELLSWORTH BORO.

Scale 1" = 100' ELLSWORTH PA. JAN. 26 '14.

APPROVED: *W. B. Stamm*
 Chief Eng. W.S. E. St. Ry. Co.

APPROVED: *W. F. Richardson*
 Chief Eng. E.C. Co.

Degress Jennings

W. F. Richardson

E.C. Co's. Coordinates
 S 156.01 E 1517.00
 (Bentleyville Boro.)