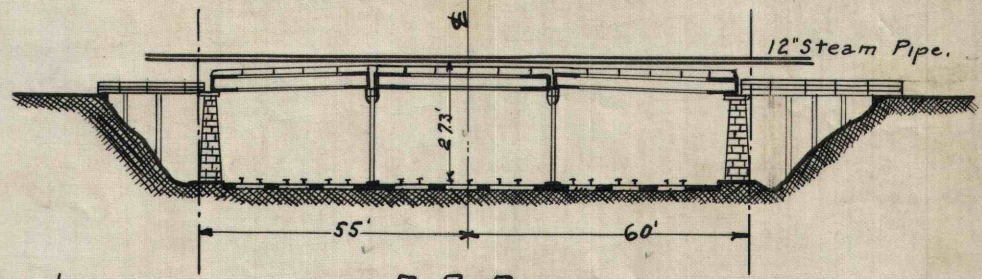
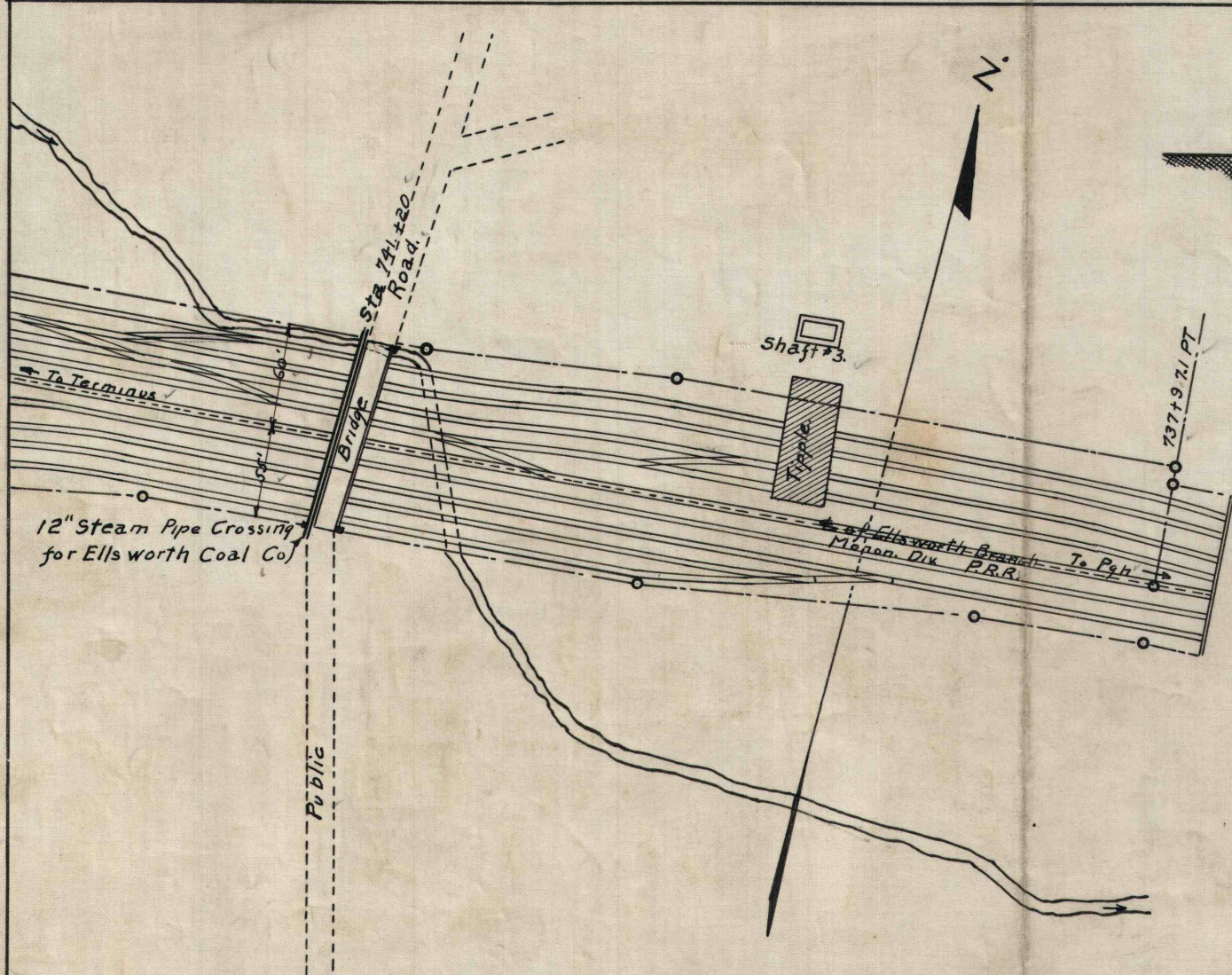


Exhibit A.



P. R. R.
Section Looking South
Scale 1"=40'



P. R. R.
 P. R. R. Division Monon Division
 Ellsworth Branch
 Proposed 12" Steam Pipe Crossing South
 of
COKEBURG
 for
 Ellsworth Coal Company.
 Scale 1"=100' ALS WB. Jct 7-1906

W. Bethlehem Twp. Washington Co Penna.

DWG. 3-5 ~~HJ33~~ SK. No 18401