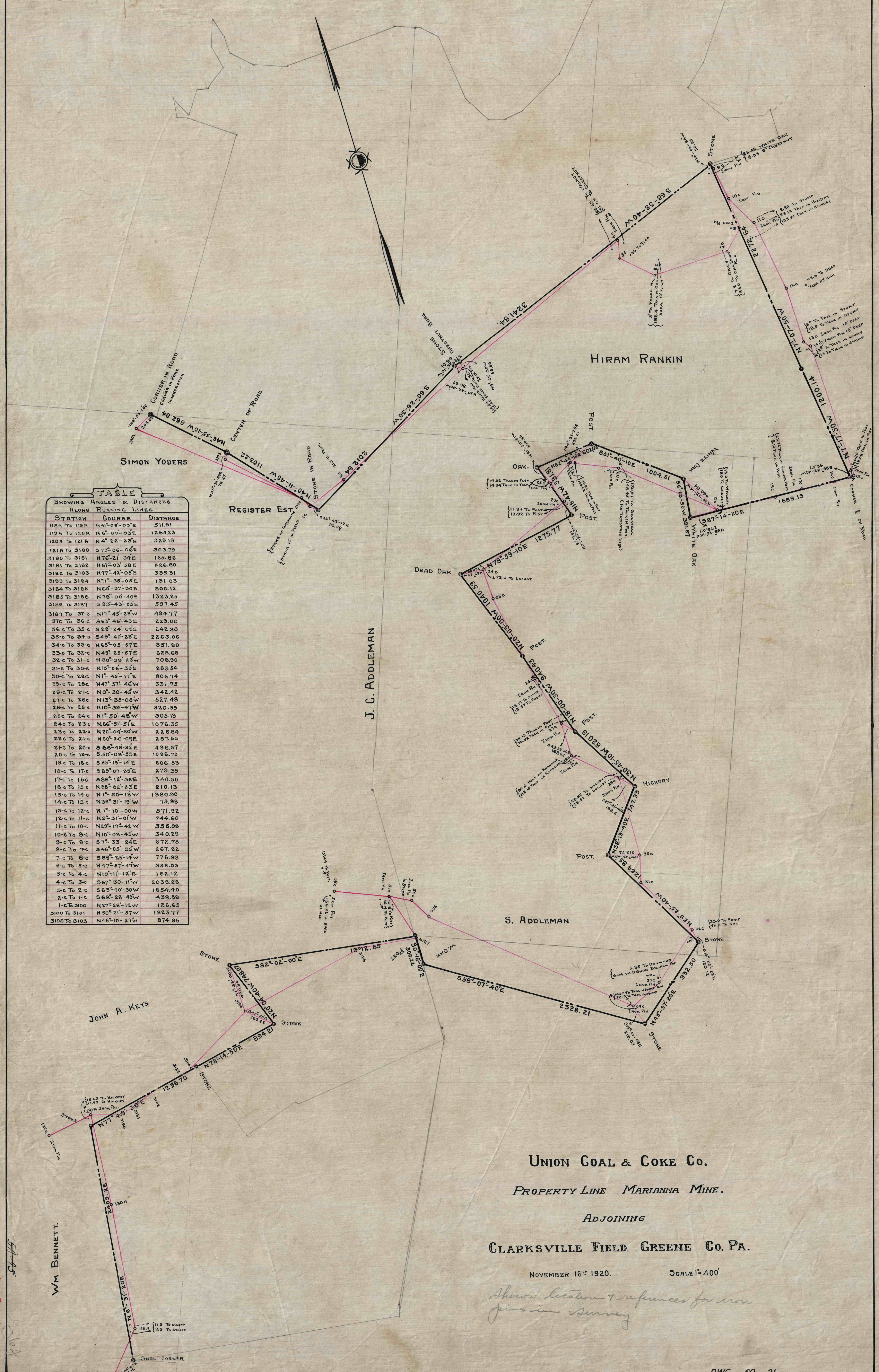


5A-45

**TABLE**  
SHOWING ANGLES & DISTANCES  
ALONG RUNNING LINES

STATION	COURSE	DISTANCE
118A To 119A	N41°-08'-03"E	511.91
119A To 120A	N6°-00'-03"E	1264.23
120A To 121A	N4°-26'-23"E	929.19
121A To 3180	S73°-06'-06"E	303.79
3180 To 3181	N76°-21'-34"E	165.86
3181 To 3182	N67°-03'-38"E	226.80
3182 To 3183	N77°-42'-05"E	335.31
3183 To 3184	N71°-25'-05"E	131.03
3184 To 3185	N60°-37'-30"E	800.12
3185 To 3186	N78°-00'-40"E	1323.25
3186 To 3187	S83°-43'-03"E	597.45
3187 To 37-c	N17°-45'-28"W	494.77
37-c To 36-c	S63°-46'-43"E	229.00
36-c To 35-c	S28°-24'-03"E	242.30
35-c To 24-c	S49°-40'-23"E	2263.06
24-c To 33-c	N65°-05'-37"E	351.80
33-c To 32-c	N49°-25'-37"E	628.69
32-c To 31-c	N30°-38'-23"W	708.90
31-c To 30-c	N15°-06'-38"E	283.54
30-c To 29-c	N1°-45'-17"E	806.74
29-c To 28-c	N47°-37'-46"W	531.75
28-c To 27-c	N0°-30'-45"W	342.42
27-c To 26-c	N13°-35'-06"W	527.48
26-c To 25-c	N10°-39'-47"W	320.39
25-c To 24-c	N1°-50'-48"W	305.19
24-c To 23-c	N66°-51'-51"E	1076.35
23-c To 22-c	N20°-04'-50"W	226.84
22-c To 21-c	N60°-20'-09"E	287.55
21-c To 20-c	S66°-48'-32"E	496.57
20-c To 19-c	S50°-08'-53"E	1086.79
19-c To 18-c	S85°-19'-14"E	606.53
18-c To 17-c	S89°-07'-25"E	279.35
17-c To 16-c	S86°-12'-36"E	340.50
16-c To 15-c	N88°-02'-23"E	210.13
15-c To 14-c	N1°-50'-18"W	1380.90
14-c To 13-c	N38°-31'-19"W	79.98
13-c To 12-c	N1°-10'-00"W	571.92
12-c To 11-c	N9°-31'-01"W	744.60
11-c To 10-c	N23°-17'-42"W	356.09
10-c To 9-c	N10°-08'-43"W	340.29
9-c To 8-c	S7°-33'-24"E	672.78
8-c To 7-c	S46°-05'-35"W	267.22
7-c To 6-c	S89°-25'-14"W	776.83
6-c To 5-c	N47°-57'-47"W	398.03
5-c To 4-c	N10°-11'-12"E	182.12
4-c To 3-c	S67°-30'-11"W	2038.26
3-c To 2-c	S63°-40'-30"W	1654.40
2-c To 1-c	S68°-22'-49"W	438.58
1-c To 3100	N27°-28'-12"W	126.65
3100 To 3101	N50°-21'-37"W	1823.77
3100 To 3103	N46°-10'-27"W	874.86



UNION COAL & COKE Co.  
PROPERTY LINE MARIANNA MINE.  
ADJOINING  
CLARKSVILLE FIELD. GREENE Co. PA.

NOVEMBER 16<sup>TH</sup> 1920. SCALE 1"=400'

*Shows location & references for iron pits in survey*

DWG-60-21