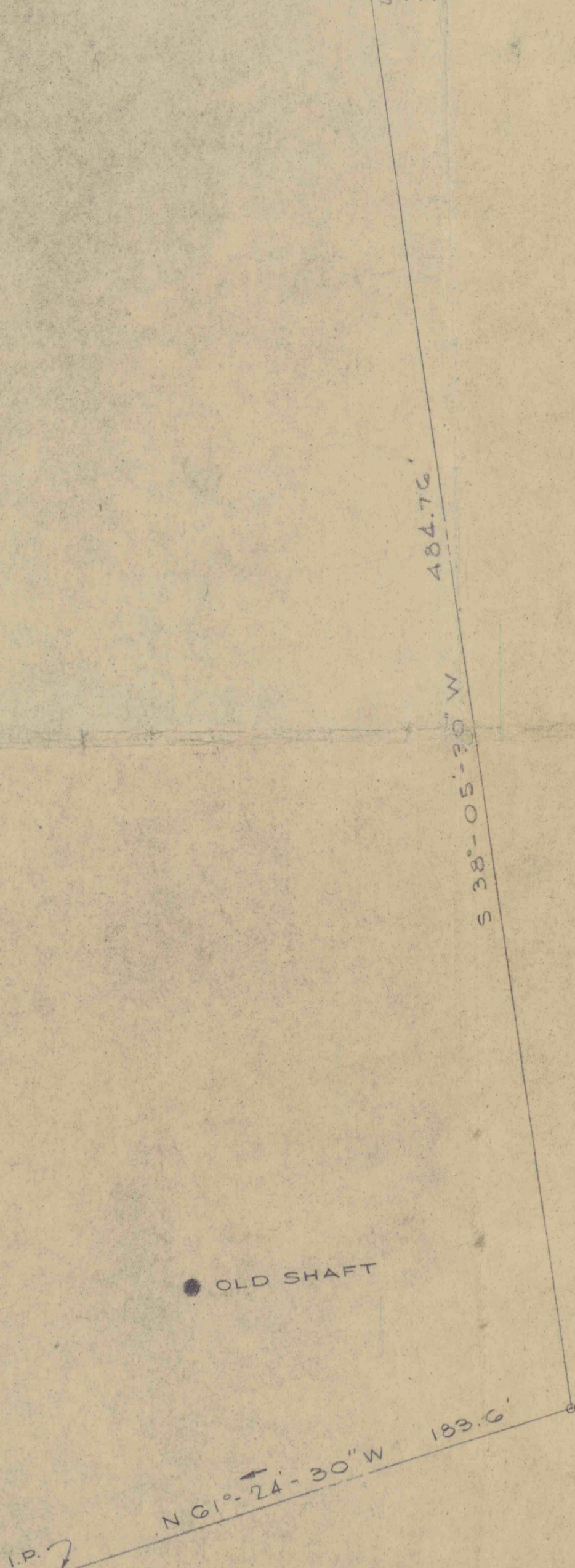
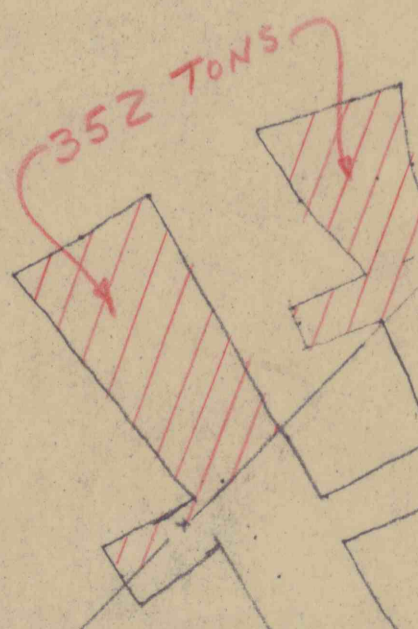


DARLINGTON RD.
ROUTE 51
I.P.



● OLD SHAFT

352 TONS



HAULAGE
ENTRY

N 89° 02' 30\"/>

DRAINAGE

AIR

ENTRY

AIR FAN

MINE ENTRANCE

N 43° 22' 30\"/>

N 45° 25' 50\"/>

N 57° 51' 38\"/>

N 87° 21' 20\"/>

N 31° 35' 30\"/>

S 45° 01' 30\"/>

S 17° 05' 30\"/>

Larson Design Group, Inc. makes no representation or warranty, expressed or implied, with regard to the accuracy, adequacy, completeness or reliability of any of the information contained herein. This map is for informational purposes only and in no way confirms the current state of the land depicted herein. Larson Design Group, Inc. hereby disclaims any and all liability for information and/or statements contained herein. Larson Design Group, Inc. shall not be liable for any damages incurred or arising as a result of reliance upon this map as well as from any errors or inaccuracies on such map.

MINE SURVEY
FOR
W. J. JORDAN

LOCATED IN

CHIPPEWA TWP., BEAVER CO., PENNA.

SCALE 1" = 40' DATE 11/22/45

DR. S.L. MICHAEL BAKER, JR., INC. 29-234

CONSULTING ENGINEERS & SURVEYORS
ROCHESTER, PENNA.

FB 143

2-10-1034

29-234