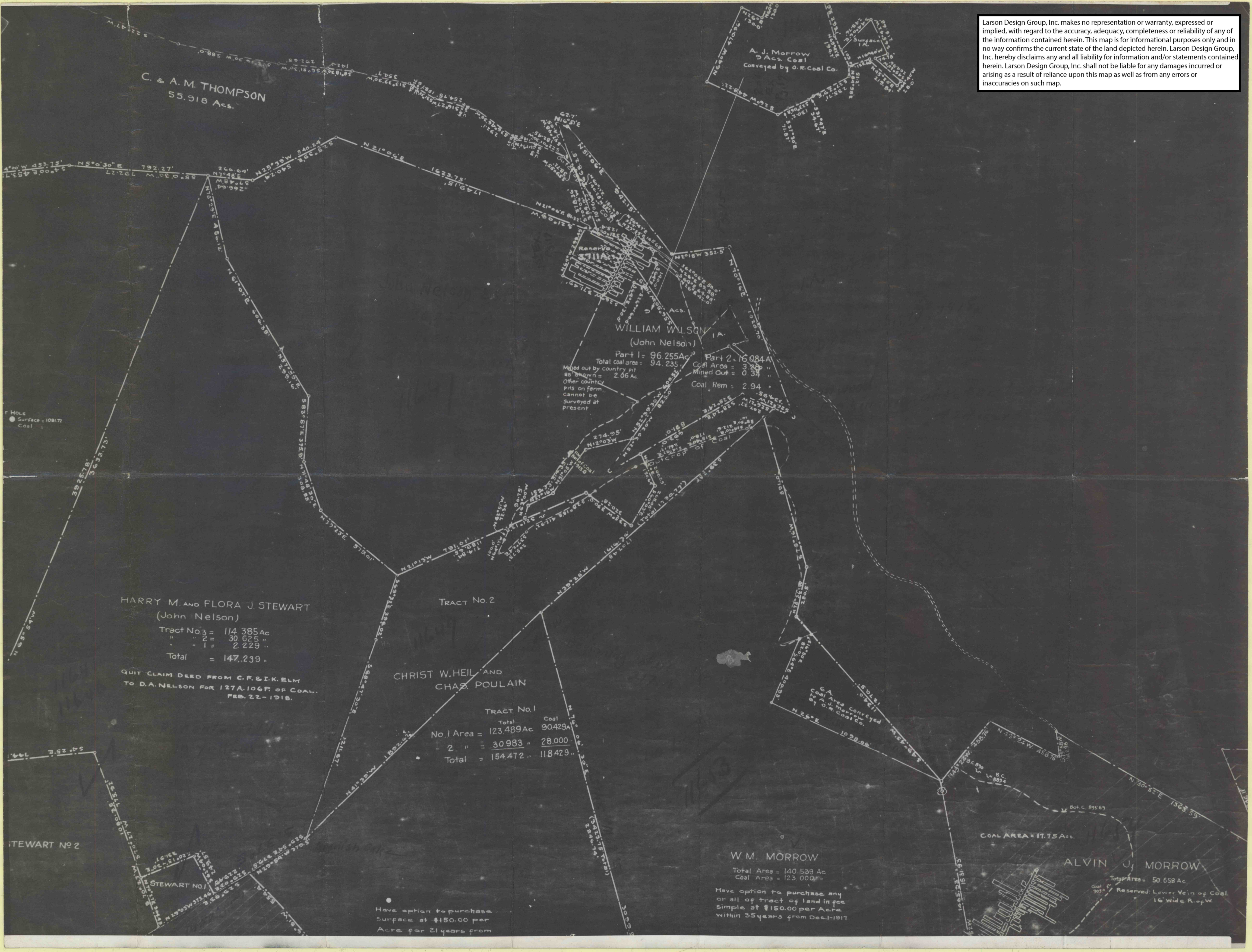


Larson Design Group, Inc. makes no representation or warranty, expressed or implied, with regard to the accuracy, adequacy, completeness or reliability of any of the information contained herein. This map is for informational purposes only and in no way confirms the current state of the land depicted herein. Larson Design Group, Inc. hereby disclaims any and all liability for information and/or statements contained herein. Larson Design Group, Inc. shall not be liable for any damages incurred or arising as a result of reliance upon this map as well as from any errors or inaccuracies on such map.



C. & A. M. THOMPSON  
55.918 Ac.

A. J. Morrow  
9 Ac. Coal  
Conveyed by O. R. Coal Co.

WILLIAM WILSON  
(John Nelson)

Part 1 = 96.255 Ac. Part 2 = 16.084 Ac.  
Total coal area = 94.235 Ac. Coal Area = 3.250 "  
Mined out by country pit as shown = 2.06 Ac. Mined Out = 0.34 "  
Other country pits on farm cannot be surveyed at present. Coal Rem = 2.94 "

HARRY M. AND FLORA J. STEWART  
(John Nelson)

Tract No. 3 = 114.385 Ac.  
" " 2 = 30.625 "  
" " 1 = 2.229 "  
Total = 147.239 "

QUIT CLAIM DEED FROM C. F. & I. K. ELM  
TO D. A. NELSON FOR 127 A. 106 P. OF COAL.  
FEB. 22 - 1918.

CHRIST W. HEIL AND  
CHAS. POULAIN

TRACT No. 1  
Total Coal  
No. 1 Area = 123.489 Ac. 90.429 Ac.  
" 2 " = 30.983 " 28.000 "  
Total = 154.472 " 118.429 "

W. M. MORROW

Total Area = 140.539 Ac.  
Coal Area = 123.000 "  
Have option to purchase any or all of tract of land in fee simple at \$150.00 per Acre within 35 years from Dec. 1 - 1917

ALVIN J. MORROW

Total Area = 50.658 Ac.  
Coal Area = 17.75 Ac.  
Reserved: Lower Vein of Coal 16' wide Rip W.

T. Hole  
● Surface = 1081.72  
○ Coal