

# Mine Map

North Sewickley Township, Beaver County, Pa.

Made at the instance of  
**Francis Coal Company.**  
 Scale: 1 inch = 200 feet.  
 Daniel C. Baker County Surveyor.

April 1, 1941.  
 Beaver, Pa.

Larson Design Group, Inc. makes no representation or warranty, expressed or implied, with regard to the accuracy, adequacy, completeness or reliability of any of the information contained herein. This map is for informational purposes only and in no way confirms the current state of the land depicted herein. Larson Design Group, Inc. hereby disclaims any and all liability for information and/or statements contained herein. Larson Design Group, Inc. shall not be liable for any damages incurred or arising as a result of reliance upon this map as well as from any errors or inaccuracies on such map.

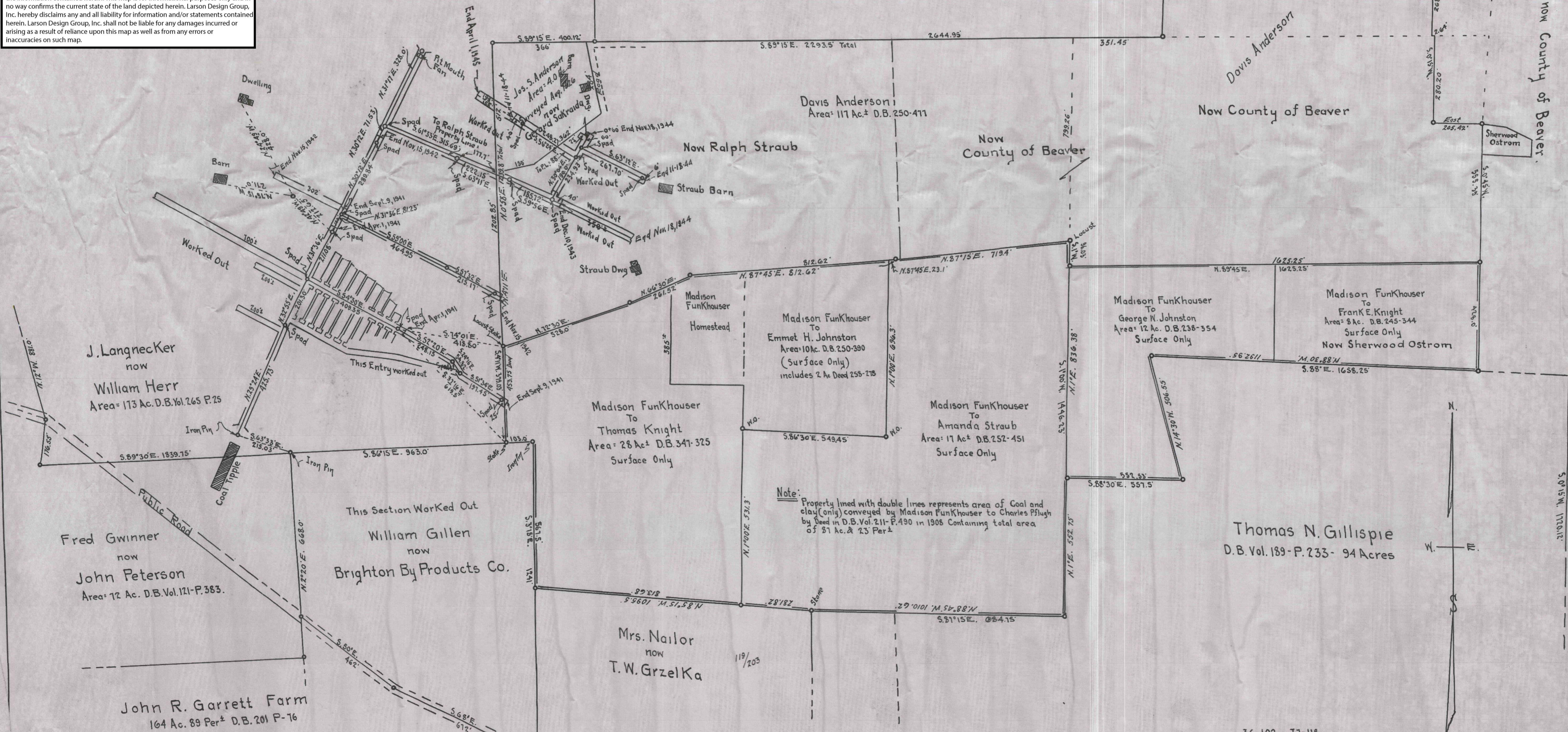
Funkhouser Heirs.

Douthett Heirs now County of Beaver.

J. Langnecker  
 now  
 William Herr.

Douthett Heirs  
 now  
 County of Beaver  
 190 Ac. 214/10  
 Now Piper and Fullerton.

Baker Coal Company now County of Beaver.



Note: Property lined with double lines represents area of Coal and clay (only) conveyed by Madison Funkhouser to Charles Pflugh by Deed in D.B. Vol. 211-P. 490 in 1908 Containing total area of 81 Ac. & 23 Per<sup>ts</sup>