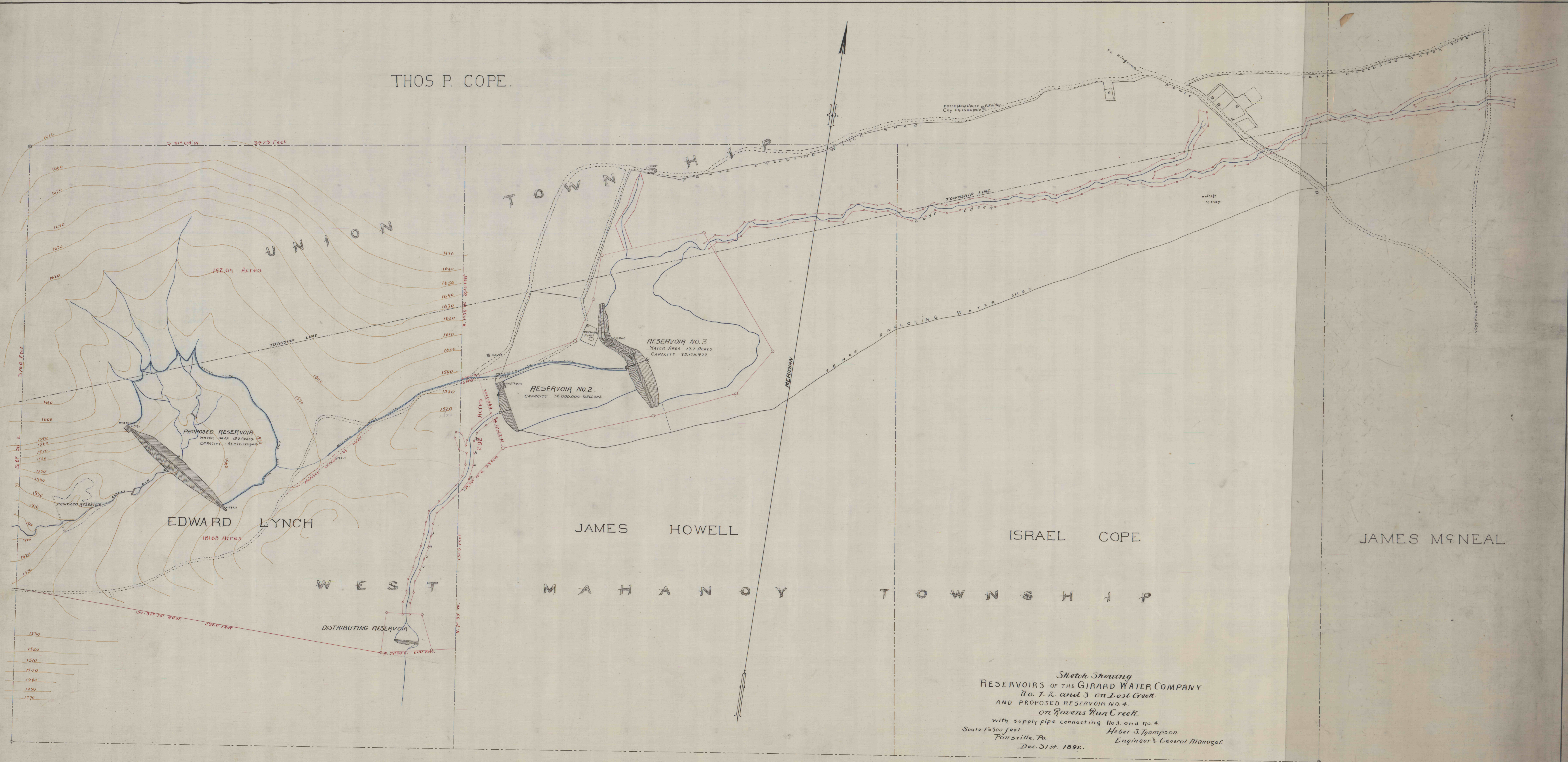


THOS P. COPE.



Sketch Showing  
 RESERVOIRS OF THE GIRARD WATER COMPANY  
 No. 1, 2, and 3 on Lost Creek  
 AND PROPOSED RESERVOIR NO. 4  
 on Ravens Run Creek  
 with supply pipe connecting No. 3 and No. 4.  
 Scale 1"=500 feet  
 Pottsville, Pa.  
 Dec. 31st, 1892.

Heber S. Thompson  
 Engineer & General Manager.