

SECOND GEOLOGICAL SURVEY OF PENNSYLVANIA
J. P. LESLEY, STATE GEOLOGIST.

TOPOGRAPHICAL MAP
OF THE
GAINES COAL BASIN

IN GAINES TOWNSHIP, TIOGA COUNTY,

FROM SURVEYS IN 1872 BY SANDERSON SMITH.

PUBLISHED BY PERMISSION.

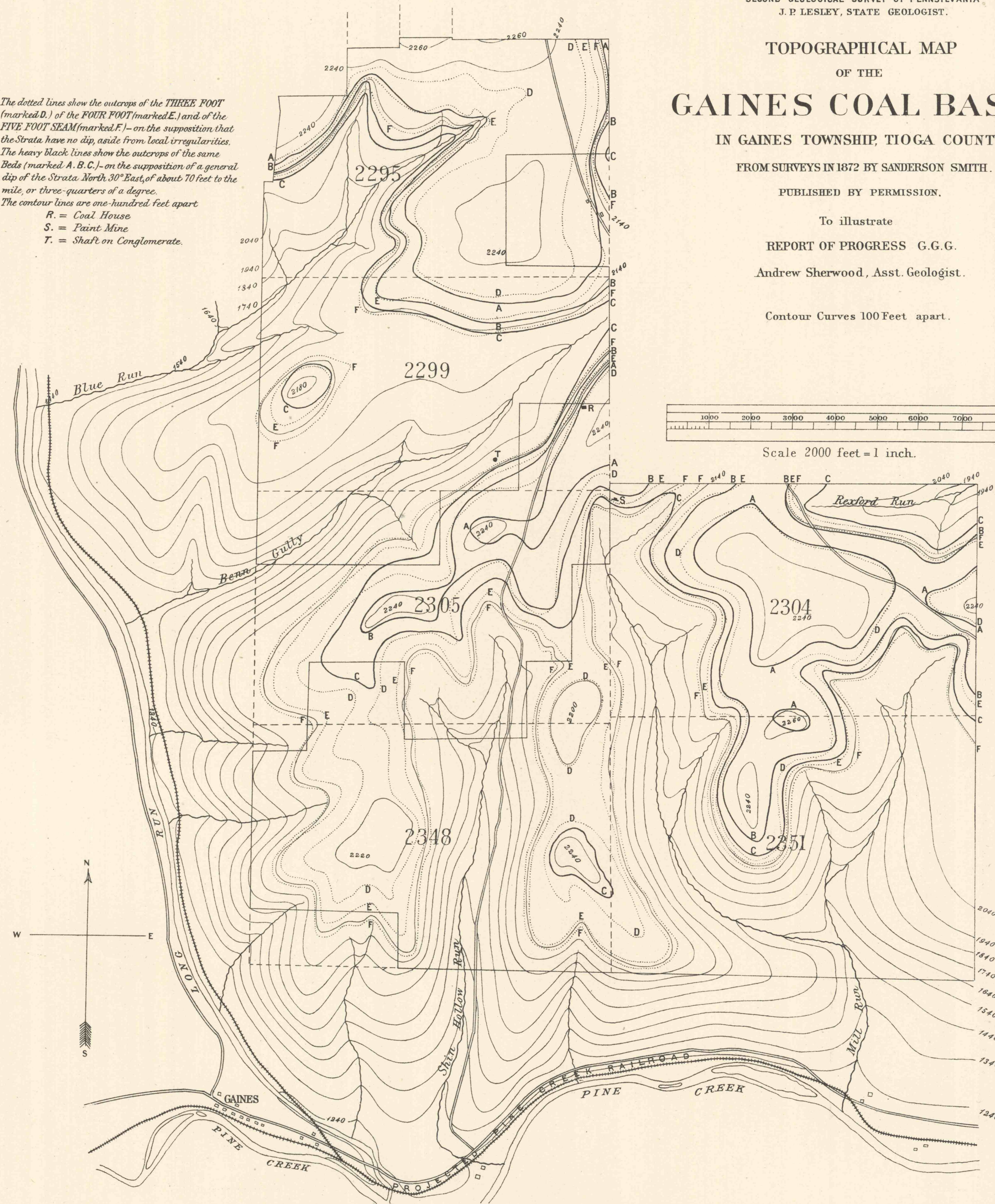
To illustrate

REPORT OF PROGRESS G. G. G.

Andrew Sherwood, Asst. Geologist.

Contour Curves 100 Feet apart.

The dotted lines show the outcrop of the THREE FOOT (marked D.) of the FOUR FOOT (marked E.) and of the FIVE FOOT SEAM (marked F.)—on the supposition that the strata have no dip, aside from local irregularities. The heavy black lines show the outcrop of the same beds (marked A, B, C.)—on the supposition of a general dip of the strata North 30° East, of about 70 feet to the mile, or three-quarters of a degree. The contour lines are one hundred feet apart.
R. = Coal House
S. = Paint Mine
T. = Shaft on Conglomerate.



JULIUS BIEN PHOTO-LITH. NEW YORK.

LANE S. HART, STATE PRINTER.