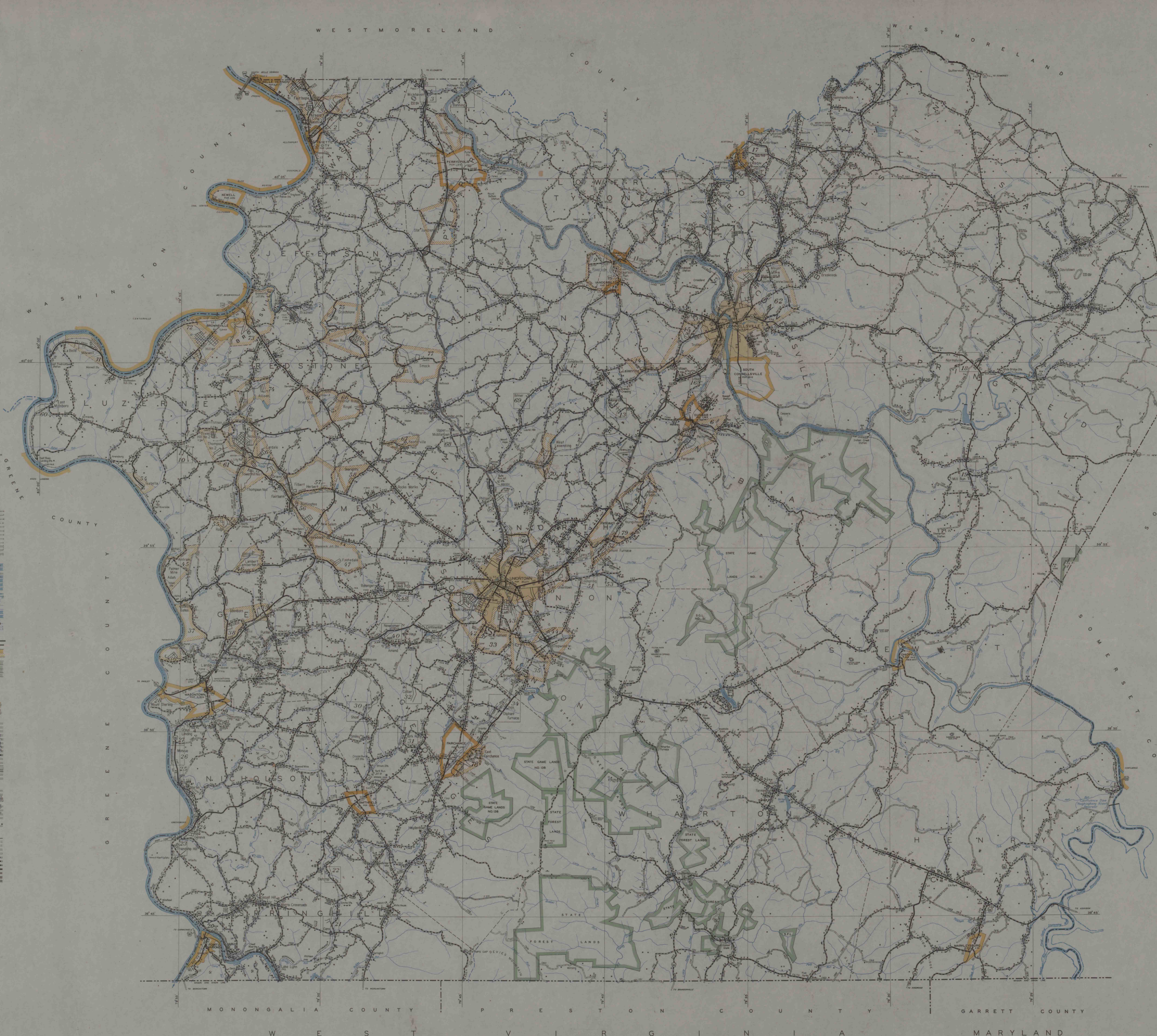


- LEGEND**
- FARM UNITS, DWELLINGS, ETC.**
- FARM UNIT (FROM SOURCE NUMBER BY UNIT)
 - DWELLING (FROM SOURCE NUMBER BY UNIT)
 - ROW OR GROUP OF DWELLINGS (FROM SOURCE NUMBER BY UNIT)
 - COMBINED DWELLING AND STORE
 - DWELLING AND POST OFFICE
 - DWELLING, BUSINESS AND POST OFFICE
 - DWELLING AND FILLING STATION
 - DWELLING, BUSINESS AND FILLING STATION
 - DWELLING, BUSINESS, FILLING STATION AND POST OFFICE
 - SEMI-DETACHED HOUSE
 - BARBARACKS OR DORMITORIES
 - SEASONAL OR SUMMER COUNTRY DWELLING
 - SEASONAL DWELLINGS CLOSELY SPACED
 - HOTEL OR INN
 - CHURCH OR OTHER RELIGIOUS INSTITUTION
 - CHURCH AND SCHOOL (FROM SOURCE NUMBER BY UNIT)
 - CEMETERY
 - CHURCH WITH CEMETERY ADJACENT
 - FRESH AIR FARM OR REST HOME
 - HOSPITAL
 - TRAIL HOUSE
 - WATER STORAGE FOR FIRE PROTECTION
 - GROUP OF MIXED CULTURAL FEATURES
- INDUSTRIAL**
- STORE OR SMALL BUSINESS ESTABLISHMENT
 - BUSINESS AND POST OFFICE
 - BUSINESS AND FILLING STATION
 - BUSINESS, FILLING STATION AND POST OFFICE
 - FACTORY OR INDUSTRIAL PLANT
 - SAW-MILL OR SAW-PIT
 - WATER POWER PLANT
 - WATER SUPPLY STAND PIPE
 - POWER PLANT
 - WATER SUBSTATION
 - WATER TOWER
 - WATER TOWER (WITH TALL TOWER)
 - ROAD RAMP STATION
- CONSERVATION AND RECREATION**
- FOREST
 - PLAYGROUND, ATHLETIC FIELD, ETC.
 - BATHING BEACH OR SWIMMING POOL
 - SCENIC SITE
 - CAMP SITE
 - COURT HOUSE OR MOTEL
 - CAMP OR LODGE
 - SMALL PARK (FROM SOURCE NUMBER BY UNIT)
 - RAILROAD STATION
 - GUIDE HOUSE OR GATE HOUSE
 - FOREST RANGER STATION
 - GUARD OR RANGER STATION
 - OBSERVATORY OR LOOKOUT TOWER
 - FISH HATCHERY
 - FISH CLUB
 - GOLF GROUND OR COUNTRY CLUB
 - POLO GROUND
 - RINGS ACADEMY
 - AMUSEMENT PARK OR HALL
 - FARNGROUND, RACE COURSE, SPEEDWAY
 - DRIVE-IN THEATRE
 - STATE PARK, RECREATION AREA, HISTORIC SITE
- MISCELLANEOUS MAP FEATURES-NATURAL FEATURES**
- AMOUNT
 - TRIANGULATION STATION
 - PORT, ARMY CAMP OR BARRACKS
 - BENCH MARK
 - LEVITING AND LONGITUDE LINE
 - PROMINENT ELEVATION WITH NAME
 - SNOW OR DEPRESSION
- AIRWAYS AND AIRPORTS**
- MILITARY FIELD
 - AIRPORT COMPLETE FACILITIES (FROM SOURCE NUMBER BY UNIT)
 - LANDING AREA OR STRIP (FROM SOURCE NUMBER BY UNIT)
 - AIRPORT LIGHT (FROM SOURCE NUMBER BY UNIT)
 - SEAPLANE BASE, MILITARY
 - SEAPLANE BASE, CIVIL
 - AIRPORT (GENERAL)
- RAILROADS**
- RAILROAD
 - RAILROAD NARROW GAUGE
 - ELECTRIC INTERURBAN OR SUBURBAN RAILROAD
 - RAILROAD STATION
 - RAILROAD TRACKS RETAINED
 - RAILROAD CROSSING
 - RAILROAD BRIDGE
 - RAILROAD TUNNEL
 - RAILROAD BRIDGE AND TUNNEL
 - STANDARD GAUGE RAILROAD (FROM SOURCE NUMBER BY UNIT)
 - NARROW GAUGE RAILROAD (FROM SOURCE NUMBER BY UNIT)
 - ELECTRIC RAILROAD
- NAVIGATION AND DRAINAGE**
- SHIP AND BARGE LINES ON NATURAL STREAMS
 - SHIP, PIER OR LANDING
 - FREE FERRY AND TOLL FERRY
 - NAVIGABLE STREAM (FROM SOURCE NUMBER BY UNIT)
 - NAVIGABLE STREAM (WITH NAME AND SOURCE)
 - HEAD OF NAVIGATION (FROM SOURCE NUMBER BY UNIT)
 - HEAD OF NAVIGATION (GENERAL)
 - CANAL
 - ABANDONED CANAL
 - DAM WITH LOCK
 - INTERMITTENT STREAM
 - NARROW STREAM
 - WIDE STREAM WITH DAM
 - LAKE, RESERVOIR OR POND
 - LAKE, RESERVOIR OR POND WITH DAM
 - WASH OR SWAMP LAND
- BOUNDARIES**
- STATE LINE
 - COUNTY LINE
 - TOWNSHIP LINE
 - CORPORATE LINE
 - UNINCORPORATED TOWNSHIP LINE
 - EXCHANGE INSET LINE
 - STATE GAME RESERVE LINE
 - STATE GAME LAND LINE
 - STATE FOREST LAND LINE
 - OTHER STATE OR FEDERAL PUBLIC LAND LINE
 - OTHER STATE OR FEDERAL PUBLIC LAND LINE
- CITY, BOROUGH OR VILLAGE CENTERS**
- STATE CAPITAL
 - COUNTY SEAT
 - OTHER CITIES AND VILLAGES
- UNINCORPORATED CITIES OR BOROUGHS**
- UNINCORPORATED URBAN CONCENTRATION
- STRUCTURES**
- HIGHWAY BRIDGE (FROM SOURCE NUMBER BY UNIT)
 - SMALL BRIDGE CLOSELY SPACED
 - COVERED BRIDGE
 - DRYBRIDGE (FROM SOURCE NUMBER BY UNIT)
 - SUSPENSION
 - ARCH
 - TRUSS OR GIRDER
 - CANTILEVER BRIDGE
 - HIGHWAY GRADE SEPARATION
 - DAM WITH ROAD
 - LEVEE OR DUNE
 - LEVEE OR DUNE WITH ROAD
 - FORD-ROAD ESTABLISHED
 - OVERHEAD INDUSTRIAL STRUCTURE
- ROADS AND ROADWAY FEATURES**
- FEDERAL AND PRIMARY HIGHWAY SYSTEM
 - FEDERAL AND SECONDARY HIGHWAY SYSTEM
 - INTERSTATE HIGHWAY SYSTEM
 - TRAFFIC CIRCLE
 - ILL-TRAFFIC ROUTE NUMBER
 - PENNSYLVANIA TRAFFIC ROUTE NUMBER
 - PENNSYLVANIA LEGISLATIVE ROUTE NUMBER
 - PENNSYLVANIA TOWNSHIP ROUTE NUMBER
 - POINTS BETWEEN WHICH DISTANCES ARE MEASURED INDICATED THERE
 - SEE ROAD AND STREETS IN UNINCORPORATED URBAN CONCENTRATIONS AND EXTENSIONS OF LOCAL ROADS WITHIN MANICULATED
 - IMPASSABLE ROAD
 - PRIMITIVE ROAD
 - UNIMPROVED ROAD
 - GRAVEL AND DRAINED ROAD
 - GRAVEL OR STONE ROAD
 - BITUMINOUS ROAD (FROM SOURCE NUMBER BY UNIT)
 - CONCRETE OR BRICK ROAD
 - DIVIDED HIGHWAY
 - HIGHWAY WITH FULL CONTROL OF ACCESS
 - HIGHWAY WITH PARTIAL CONTROL OF ACCESS



GENERAL HIGHWAY MAP
FAYETTE COUNTY
PENNSYLVANIA

PREPARED BY THE
PENNSYLVANIA DEPARTMENT OF HIGHWAYS
IN CO-OPERATION WITH THE
BUREAU OF PUBLIC ROADS
U.S. DEPARTMENT OF COMMERCE
DATA OBTAINED FROM
STATE-WIDE HIGHWAY PLANNING SURVEY

MAP SCALE
ENLARGEMENT SCALE
1958

CULTURE FEATURES AS OF 1954

POPULATION OF COUNTY - 1950 CENSUS 185,899
AREA OF COUNTY - 800 SQUARE MILES

IMAPS#20944

GENERAL HIGHWAY MAP FAYETTE COUNTY PENNSYLVANIA 26