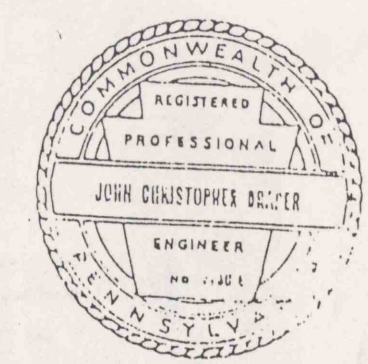


NO. 18
DUQUESNE LIGHT CO.
WARWICK MINE NO. 2
MONONGAHELA TWP., GREENE COUNTY, PA.

DUQUESNE LIGHT CO.
COAL DEPARTMENT
WARWICK MINE NO. 2
SCALE: 1"=100'
MONONGAHELA TWP., GREENE COUNTY, PA.

John D. Draper
RPS 2430'S

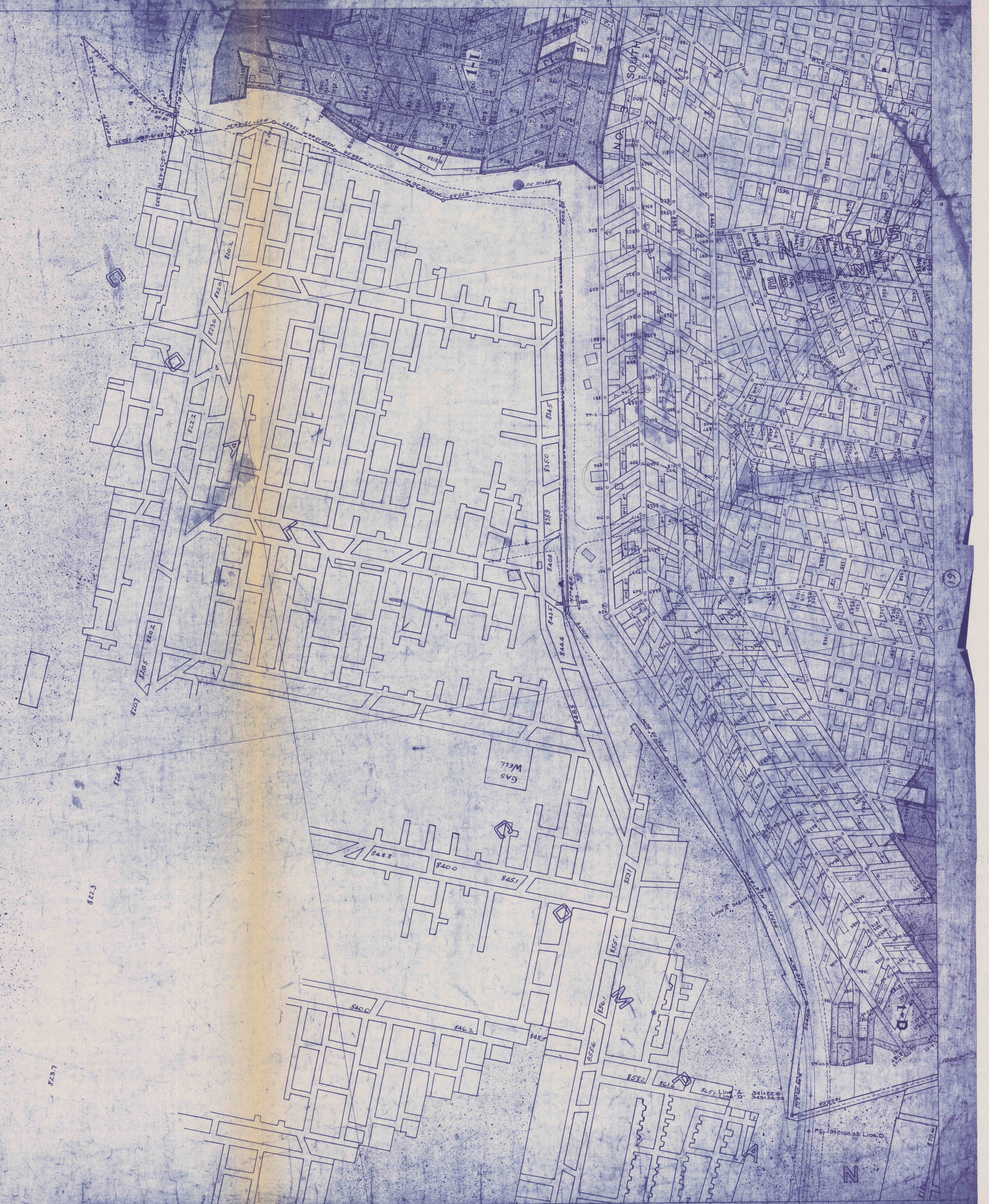


LEGEND
FINAL MAP. MINING WAS COMPLETED AT
THE END OF 6-22-79.

PROPERTY LINE
PROTECTED STRUCTURES
UNPROTECTED STRUCTURES (NEW, AFTER LAW)
STRUCTURES DEMOLISHED

RECEIVED
DIVISION OF MINE
SUBSIDENCE REGULATION
JUL 27 1979
McMURRAY
PENNSYLVANIA

18
N



DUQUESNE LIGHT CO.
WARWICK MINE NO. 2
MONONGAHELA TWP., GREENE COUNTY, PA.
NO. 18

FINAL