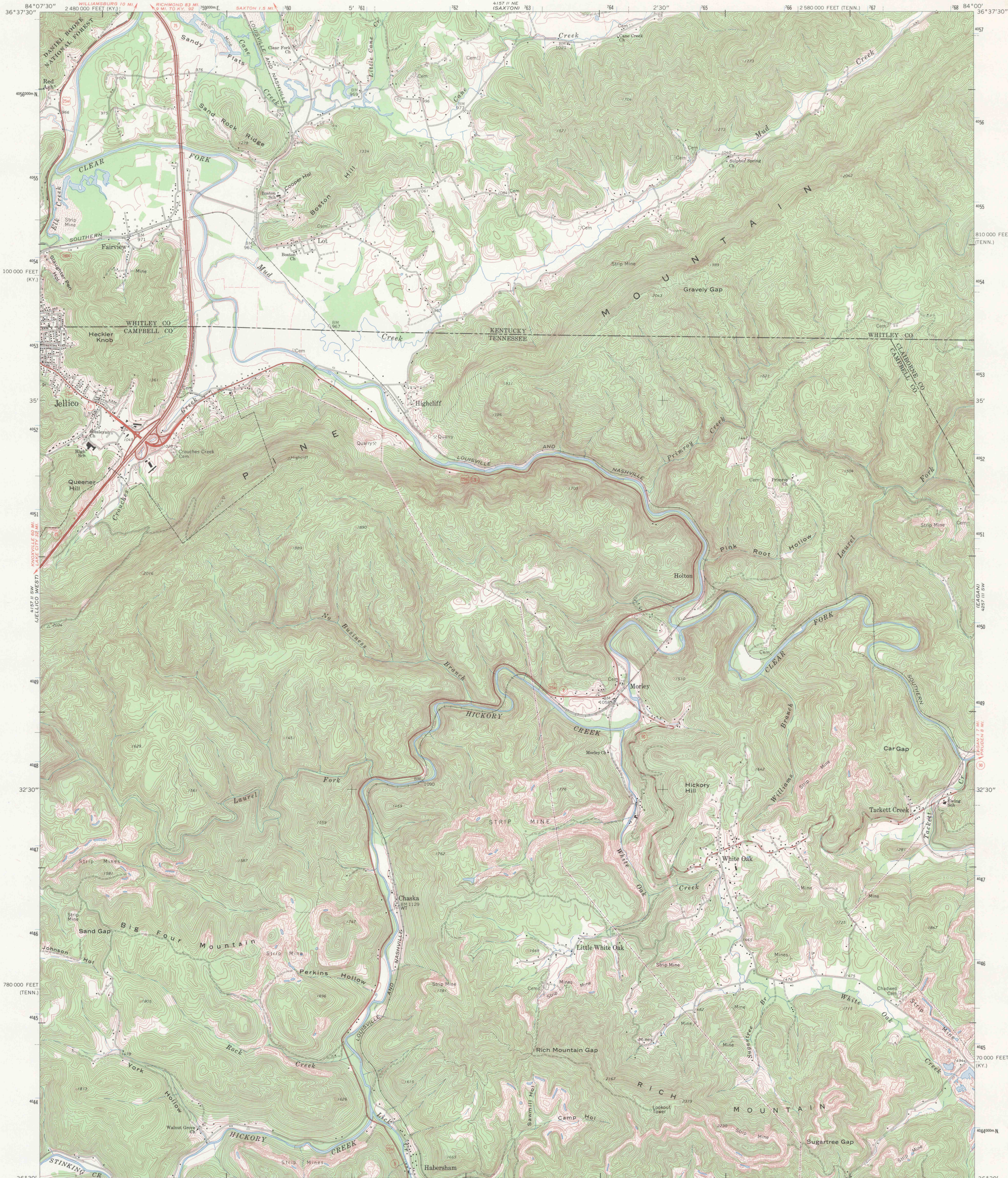


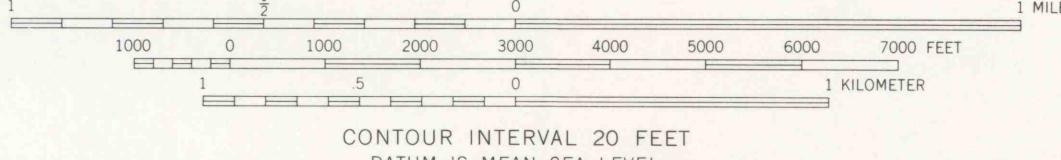
UNITED STATES
DEPARTMENT OF THE INTERIOR
GEOLOGICAL SURVEY

JELICO EAST QUADRANGLE
TENNESSEE-KENTUCKY
7.5 MINUTE SERIES (TOPOGRAPHIC)

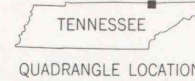


Mapped, edited, and published by the Geological Survey
in cooperation with State of Tennessee agencies and
Kentucky Geological Survey
Revised in cooperation with Kentucky Geological Survey
Control by USGS, USC&GS, and Tennessee Valley Authority
Topography by photogrammetric methods from aerial
photographs taken 1951. Field checked 1953.
Revised from aerial photographs taken 1969. Field checked 1970.
Polyconic projection. 1927 North American datum
10,000-foot grids based on Tennessee coordinate system,
and Kentucky coordinate system, south zone
1000-meter Universal Transverse Mercator grid ticks,
zone 16, shown in blue.
Fine red dashed lines indicate selected fence and field lines where
generally visible on aerial photographs. This information is unchecked.

UTM GRID AND 1970 MAGNETIC NORTH
DECLINATION AT CENTER OF SHEET.
MAPS 19067



THIS MAP COMPLIES WITH NATIONAL MAP ACCURACY STANDARDS
FOR SALE BY U.S. GEOLOGICAL SURVEY, WASHINGTON, D.C. 20242.
KENTUCKY GEOLOGICAL SURVEY, LEXINGTON, KENTUCKY 40506.
KENTUCKY DEPARTMENT OF COMMERCE, FRANKFORT, KENTUCKY 40601,
AND TENNESSEE DIVISION OF GEOLOGY, NASHVILLE, TENNESSEE 37219
A FOLDER DESCRIBING TOPOGRAPHIC MAPS AND SYMBOLS IS AVAILABLE ON REQUEST



ROAD CLASSIFICATION
Primary highway, hard surface
Secondary highway, hard surface
Light-duty road, hard or improved surface
Unimproved road
Interstate Route
U.S. Route
State Route

JELICO EAST, TENN.-KY.
SE/4 JELICO 15' QUADRANGLE
N3630-W8400/7.5
1970
AMS 4157 II SE-SERIES W841