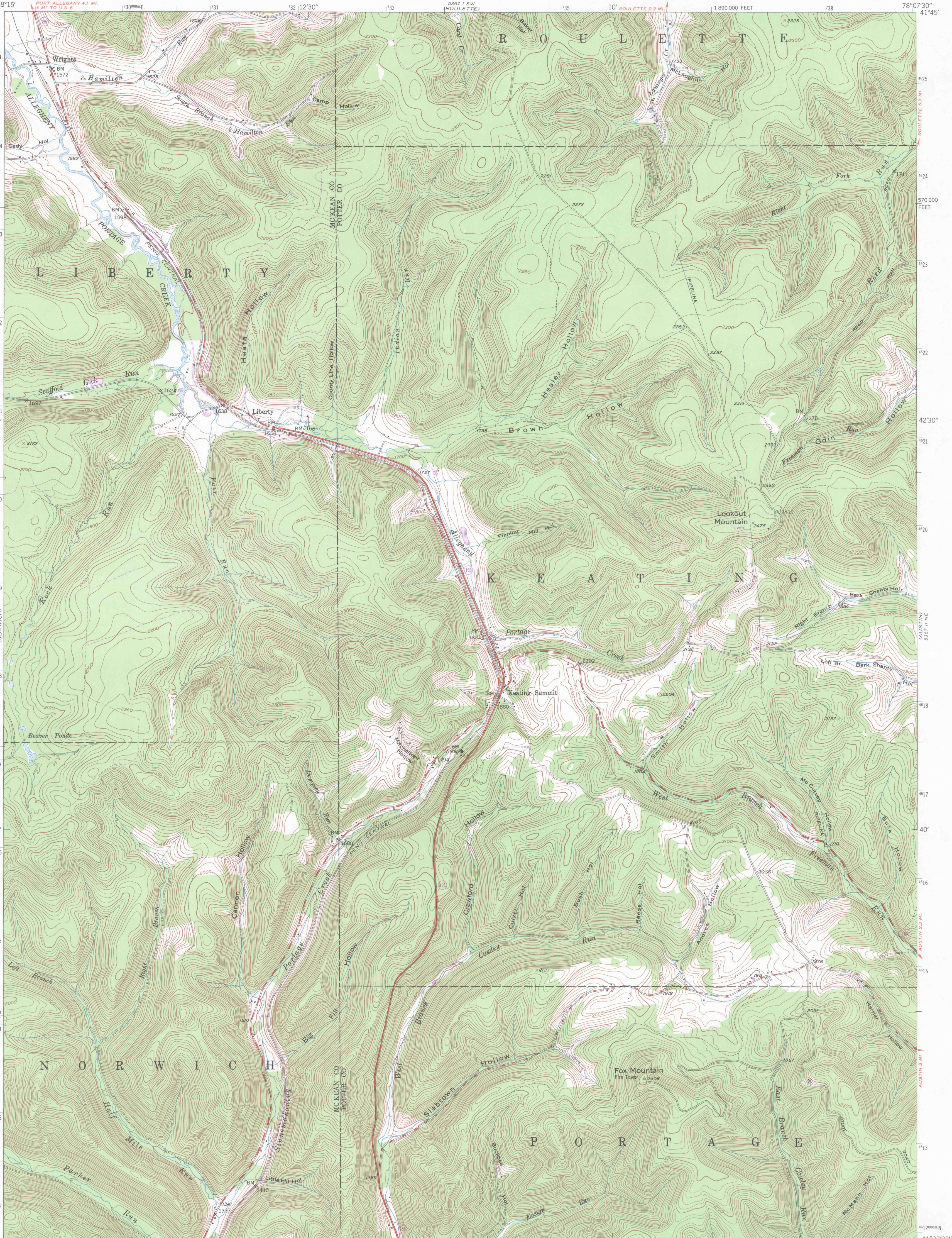


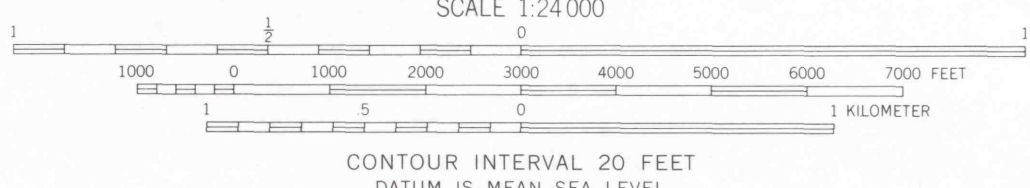
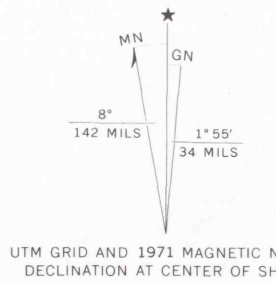
UNITED STATES
DEPARTMENT OF THE INTERIOR
GEOLOGICAL SURVEY

COMMONWEALTH OF PENNSYLVANIA
DEPARTMENT OF ENVIRONMENTAL RESOURCES
TOPOGRAPHIC AND GEOLOGIC SURVEY

KEATING SUMMIT QUADRANGLE
PENNSYLVANIA
7.5 MINUTE SERIES (TOPOGRAPHIC)
NW/4 EMPORIUM 15 QUADRANGLE

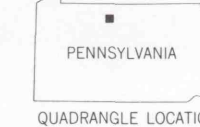


Mapped, edited, and published by the Geological Survey
Control by USGS, USC&GS, and Pa. Dept. of Highways
Topography from aerial photographs by multiplex methods
Aerial photographs taken 1945. Field check 1948
Polyconic projection. 1927 North American datum
10,000-foot grid based on Pennsylvania coordinate system,
north zone
1000-meter Universal Transverse Mercator grid ticks,
zone 17, shown in blue
Revisions shown in purple compiled in cooperation with State of
Pennsylvania agencies from aerial photographs taken 1971. This
information not field checked



A-21

THIS MAP COMPLIES WITH THE NATIONAL MAP ACTING STANDARDS
FOR SALE BY U.S. GEOLOGICAL SURVEY, WASHINGTON, D.C. 20242
A FOLDER DESCRIBING TOPOGRAPHIC MAPS AND SYMBOLS IS AVAILABLE ON REQUEST



ROAD CLASSIFICATION
HARD-SURFACE ALL WEATHER ROADS DRY WEATHER ROADS
Heavy-duty ———— Improved dirt ————
Medium-duty ———— Unimproved dirt ————
Loose-surface, graded, or narrow hard-surface ————
U. S. Route State Route

KEATING SUMMIT, PA.
NW/4 EMPORIUM 15 QUADRANGLE
N4137.5—W7807.5/7.5

1948
PHOTOREVISED 1971
AMS 5367 II NW—SERIES V831

IMAPS 18987