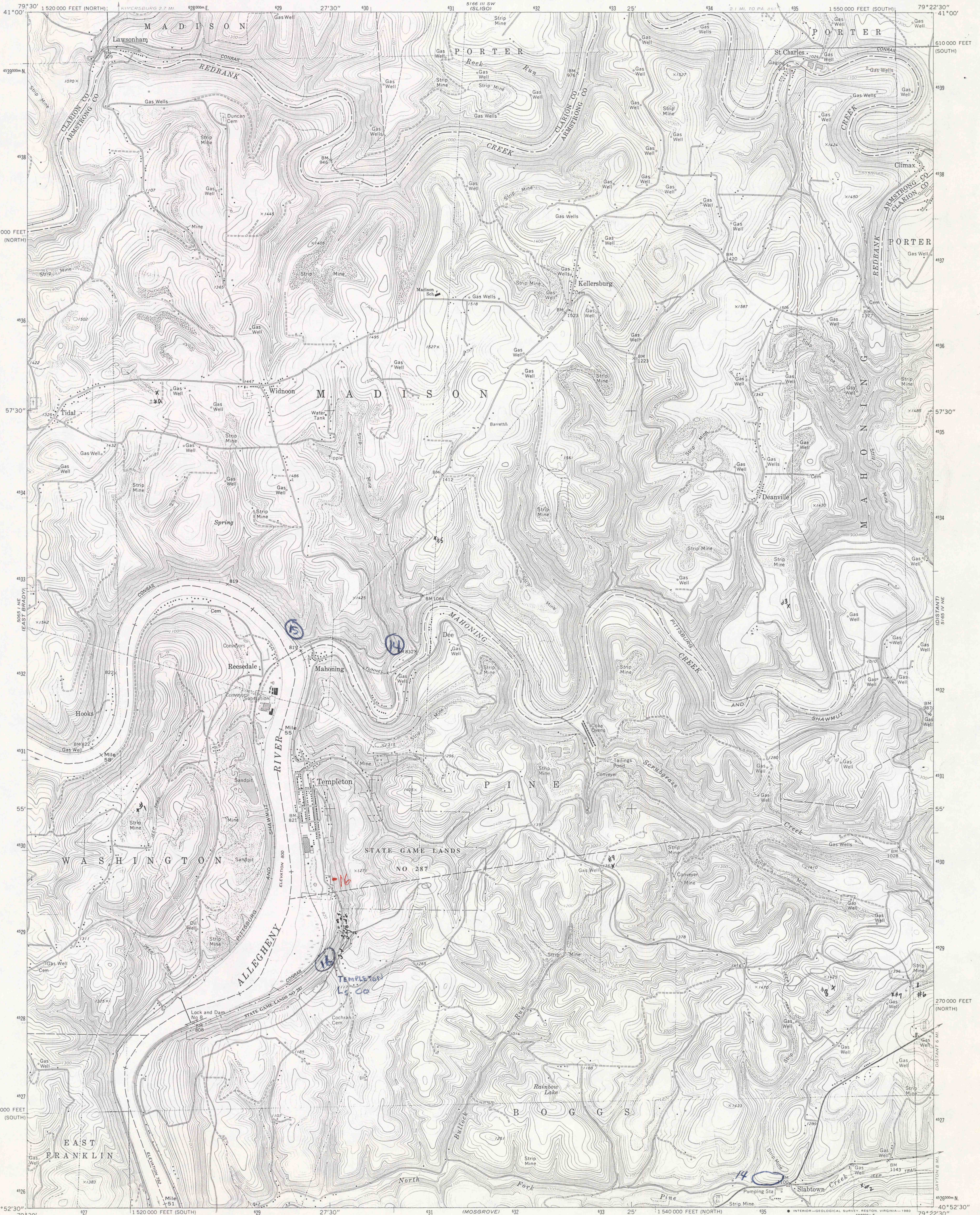


UNITED STATES
DEPARTMENT OF THE INTERIOR
GEOLOGICAL SURVEY

COMMONWEALTH OF PENNSYLVANIA
DEPARTMENT OF ENVIRONMENTAL RESOURCES
TOPOGRAPHIC AND GEOLOGIC SURVEY

TEMPLETON QUADRANGLE
PENNSYLVANIA
7.5 MINUTE SERIES (TOPOGRAPHIC)



Mapped, edited, and published by the Geological Survey

Control by USGS and USC&GS

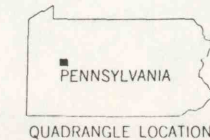
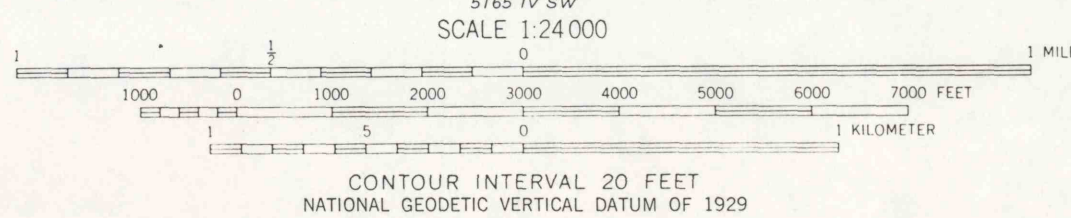
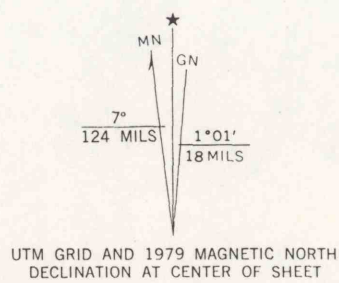
Topography by photogrammetric methods from aerial photographs taken 1967. Field checked 1969

Polyconic projection. 1927 North American datum
10,000-foot grids based on Pennsylvania coordinate system, south and north zones
1000-meter Universal Transverse Mercator grid ticks, zone 17, shown in blue

To place on the predicted North American Datum 1983
move the projection lines 3 meters south and
19 meters west as shown by dashed corner ticks

There may be private inholdings within the boundaries of the National or State reservations shown on this map

Fine red dashed lines indicate selected fence and field lines where



| ROAD CLASSIFICATION | |
|---------------------------------|---|
| Primary highway, hard surface | Light-duty road, hard or improved surface |
| Secondary highway, hard surface | Unimproved road |
| Interstate Route | U. S. Route |
| | State Route |

TEMPLETON, PA.

N4052.5-W7922.5/7.5

1969

PHOTOREVISED 1979

DMA 5165 IV NW-SERIES V831

THIS MAP COMPLIES WITH NATIONAL MAP ACCURACY STANDARDS
FOR SALE BY U. S. GEOLOGICAL SURVEY, RESTON, VIRGINIA 22092
A FOLDER DESCRIBING TOPOGRAPHIC MAPS AND SYMBOLS IS AVAILABLE ON REQUEST

Revisions shown in purple compiled in cooperation with State of Pennsylvania agencies from aerial photographs taken 1977 and other source data. This information not field checked. Map edited 1979
Boundary lines shown in purple compiled from latest information available from the controlling authority

IMAPS#18938