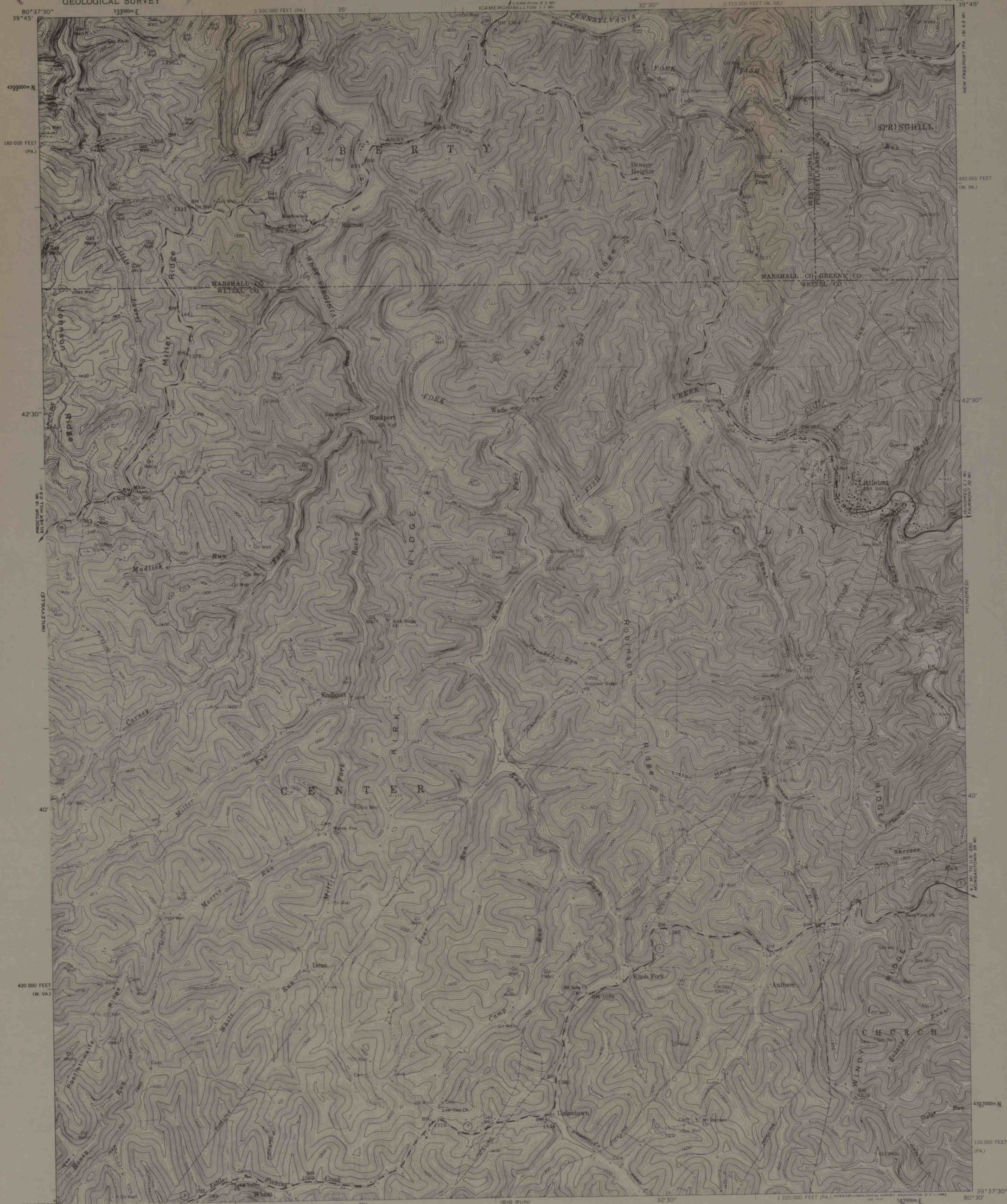


UNITED STATES
DEPARTMENT OF THE INTERIOR
GEOLOGICAL SURVEY

STATE OF WEST VIRGINIA
REPRESENTED BY THE
STATE OF WEST VIRGINIA GEOLOGICAL SURVEY
AND OTHER STATE AGENCIES

LITTLETON QUADRANGLE
WEST VIRGINIA-PENNSYLVANIA
7.5 MINUTE SERIES (TOPOGRAPHIC)
NE 4 LITTLETON 15 QUADRANGLE



Mapped, edited, and published by the Geological Survey
Control by USGS and USCGS
Topography by photogrammetric methods from aerial
photographs taken 1956, 1957, and 1958. Field checked 1960
Polyconic projection. 1927 North American datum
10,000-foot grids based on West Virginia coordinate system,
north zone, and Pennsylvania coordinate system, south zone
1000-meter Universal Transverse Mercator grid ticks,
zone 17, shown in blue
Fine red dashed lines indicate selected fence and field lines where
generally visible on aerial photographs. This information is unchecked

APPROXIMATE MEAN
DECLINATION, 1960

THIS MAP COMPLIES WITH NATIONAL MAP ACCURACY STANDARDS
FOR SALE BY U. S. GEOLOGICAL SURVEY, WASHINGTON 25, D. C.
A FOLDER DESCRIBING TOPOGRAPHIC MAPS AND SYMBOLS IS AVAILABLE ON REQUEST

ROAD CLASSIFICATION
Heavy-duty ——— Light-duty ———
Medium-duty ——— Unimproved dirt ———
U. S. Route —○— State Route —○—

LITTLETON, W. VA.—PA.
NE 4 LITTLETON 15 QUADRANGLE
N3937.5—W8030.7.5

1960

Images # 1851