

5000 FEET
COWANVILLE

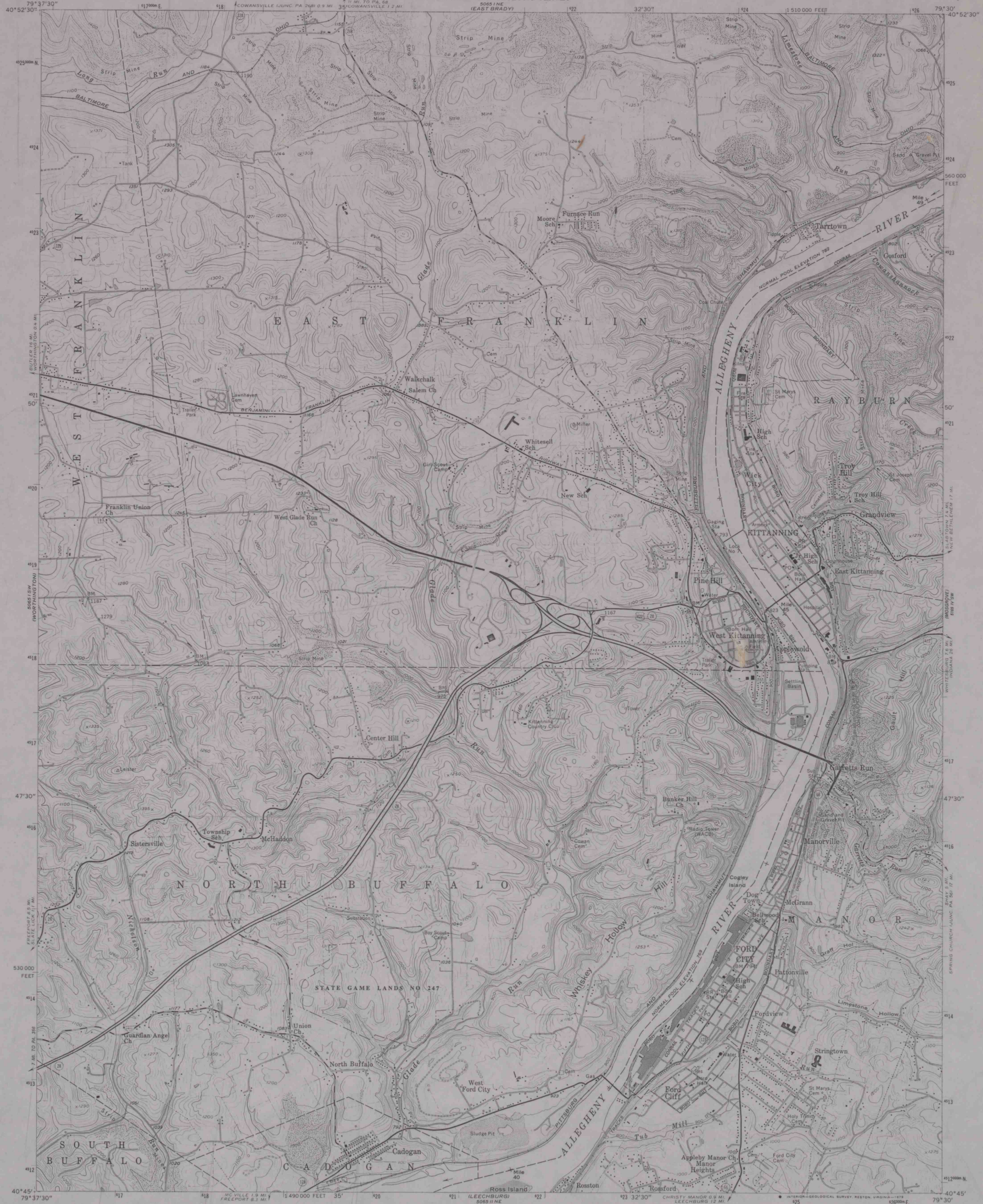
UNITED STATES
DEPARTMENT OF THE INTERIOR
GEOLOGICAL SURVEY



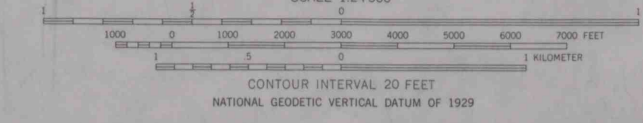
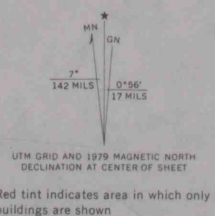
STATE OF PENNSYLVANIA
DEPARTMENT OF INTERNAL AFFAIRS
TOPOGRAPHIC AND GEOLOGIC SURVEY

KITTANNING QUADRANGLE
PENNSYLVANIA-ARMSTRONG CO.
7.5 MINUTE SERIES (TOPOGRAPHIC)

5000 FEET
TOWNSHIP



Mapped, edited, and published by the Geological Survey
Control by USGS and USC&GS
Topography from aerial photographs by photogrammetric methods
Aerial photographs taken 1952. Field check 1958
Polyconic projection. 1927 North American datum
10,000-foot grid based on Pennsylvania coordinate system,
south zone
1000-meter Universal Transverse Mercator grid ticks,
zone 17, shown in blue
To place on the predicted North American Datum 1983
move the projection lines 3 meters south and
19 meters west as shown by dashed corner ticks
There may be private inholdings within the boundaries of
the National or State reservations shown on this map
Fine red dashed lines indicate selected fence and field lines where
generally visible on aerial photographs. This information is un-checked



ROAD CLASSIFICATION
Heavy-duty ——— Light-duty ———
Medium-duty ——— Unimproved dirt ———
U.S. Route ——— State Route ———
D. Stadtmiller VF
KITTANNING, PA.
N4045-W7930/7.5
1958
PHOTOREVISED 1979
AMS 5085 1 SE-SERIES V831

IMAPS # 18488