

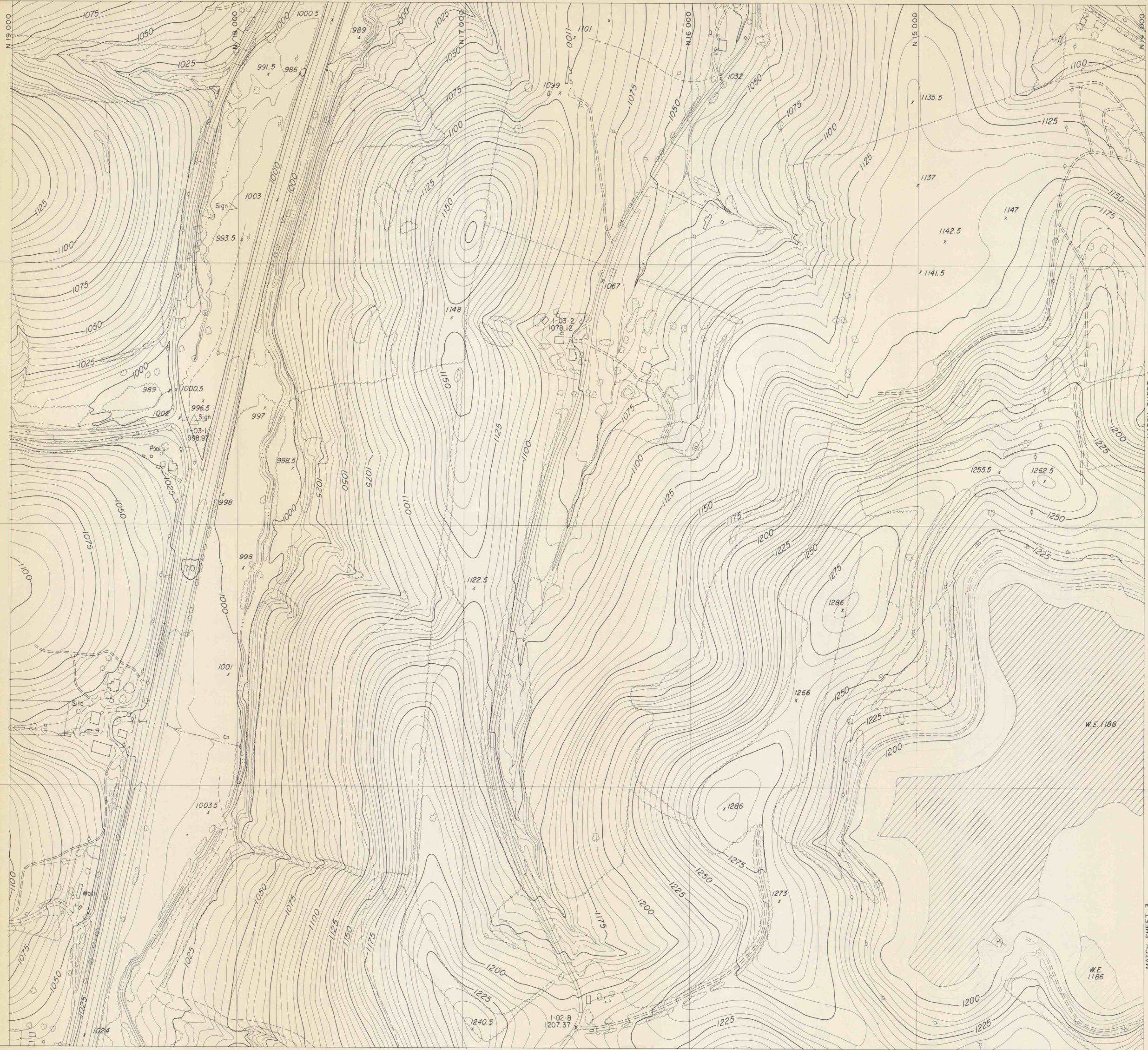
N 20 000  
W 8 000

N 19 000  
W 9 000

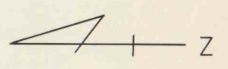
N 18 000  
W 10 000

N 17 000  
W 11 000

N 16 000  
W 12 000



THIS MAP PREPARED BY PHOTOGRAMMETRIC METHODS USING AERIAL  
PHOTOGRAPHY DATED JANUARY 27, 1990 BY L. ROBERT KIMBALL,  
CONSULTING ENGINEERS, EBENSBURG, PENNSYLVANIA  
THIS MAP UPDATED FROM AERIAL PHOTOGRAPHY DATED DECEMBER 14, 1990, JUNE 9, 1992.



INDEX MAP	
1	2
3	4

TOPOGRAPHIC MAP  
OF  
MINE 60 YARD AND REFUSE AREA  
FOR  
BETHLEHEM MINES CORPORATION  
PENNSYLVANIA DIVISION  
SCALE: 1" = 200'  
CONTOUR INTERVAL: 5'

SHEET 1 OF 1

IMAPS # 15996