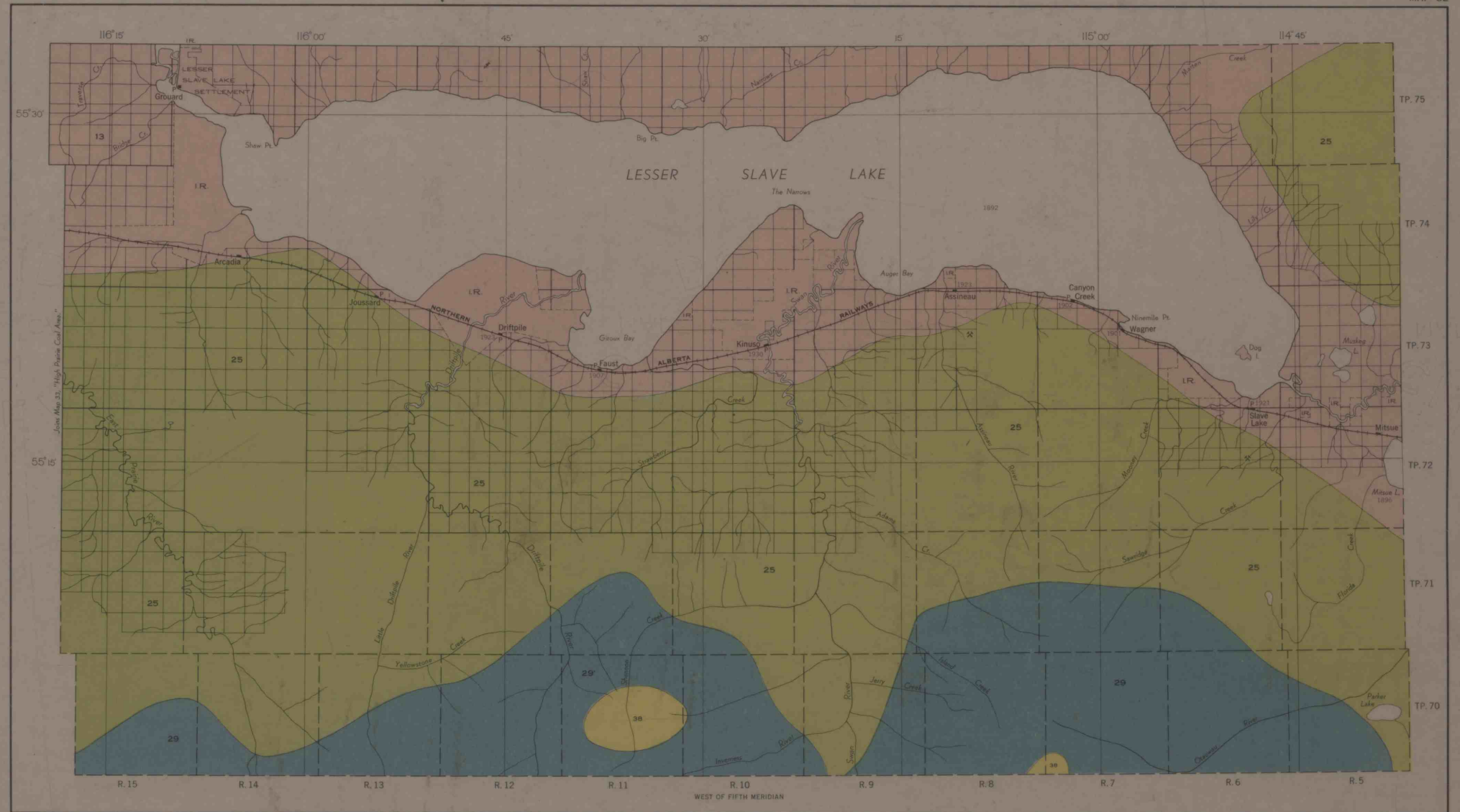


Cartography by the Geological Mapping Division, 1948

- GEOLOGICAL REFERENCE MAPS**
1. G.S.C. Preliminary Map "Sassnitz - Bison Lake"
Scale, 1 inch to 4 miles. Lat. 55°18' 57"22", Long. 116°00' 119°00'.
 2. Research Council of Alberta Map 16,
"Geological Map Alberta." Scale, 1 inch to 16 miles.
Lat. 49°00' 60°00', Long. 110°00' 120°00'.

**DIAGRAM OF TOWNSHIP
SHOWING NUMBERING OF SECTIONS**

31	32	33	34	35	36
26	27	28	29	30	31
21	22	23	24	25	26
16	17	18	19	20	21
11	12	13	14	15	16
6	7	8	9	10	11
1	2	3	4	5	6



Published, 1949.
Lithographed and printed by the
Army Survey Establishment R.C.E.
Department of National Defence.

To accompany Report by B.R. MacKay, 1949.

SLAVE COAL AREA, ALBERTA
ALBERTA PLAINS, BELLY RIVER SERIES

Scale: 1 Inch to 4 Miles = 1:253,440

