

FIG. 41.—RELIEF MAP OF THE NORTHERN APPALACHIAN MOUNTAINS.
The Latrobe quadrangle is situated on the plateau lying west of the belt of valley ridges, in the southwestern part of Pennsylvania.

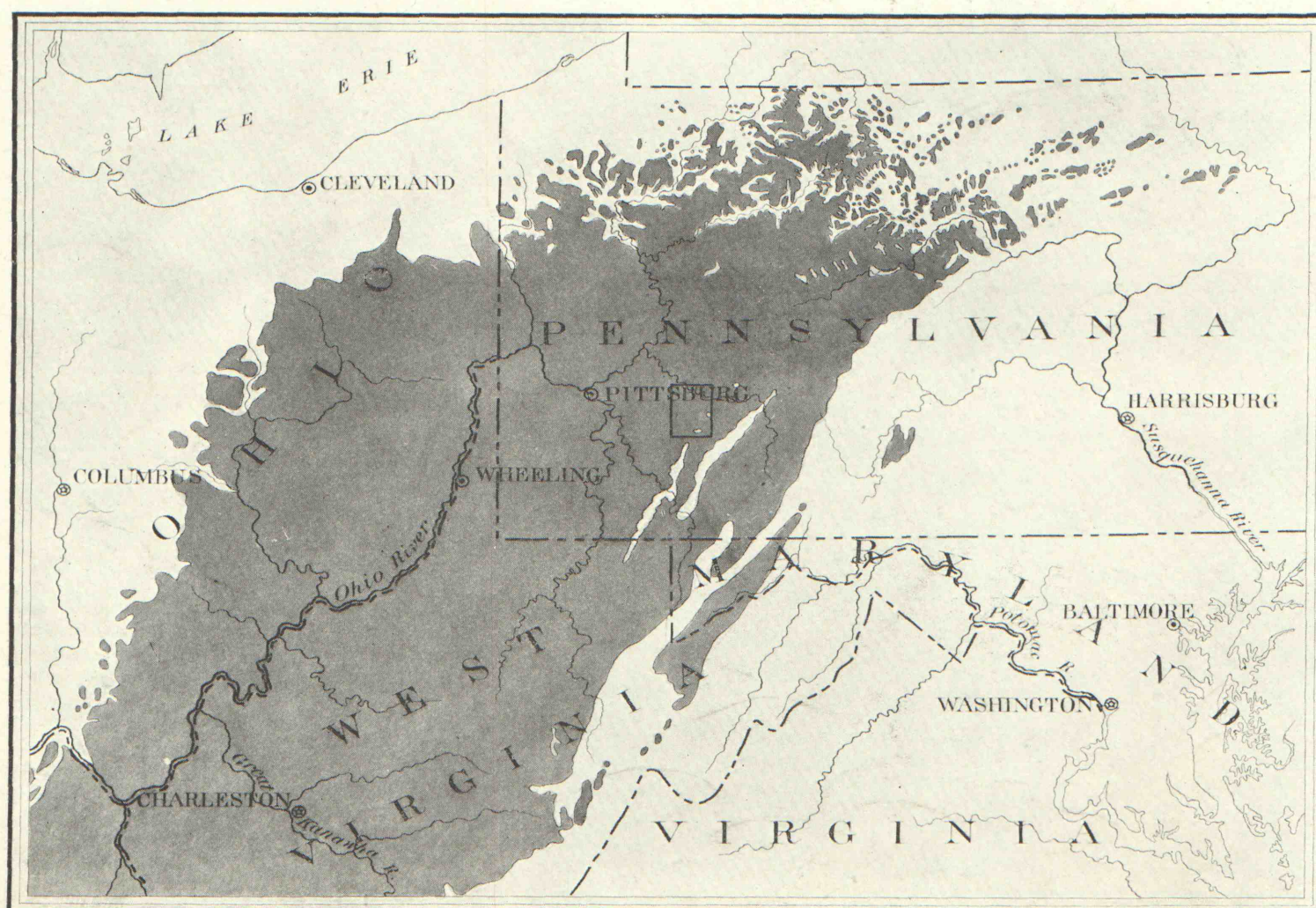


FIG. 42.—MAP SHOWING THE EXTENT OF THE NORTHERN PART OF THE APPALACHIAN COAL FIELD.
The position of the Latrobe quadrangle within the coal field is shown by the rectangle.

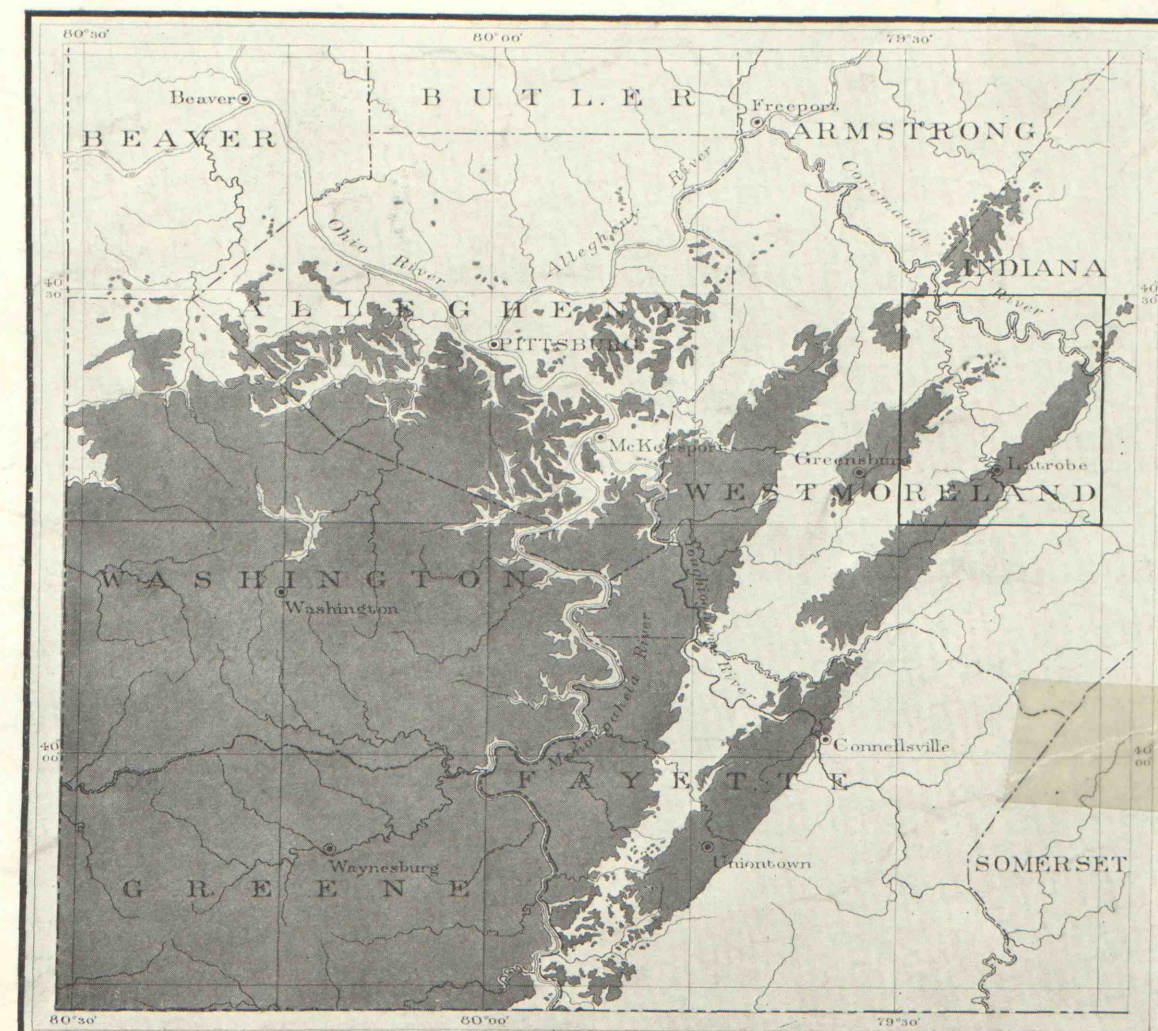


FIG. 43.—MAP SHOWING THE AREA OF THE PITTSBURGH COAL IN PENNSYLVANIA.
The Latrobe quadrangle is situated on its eastern border.