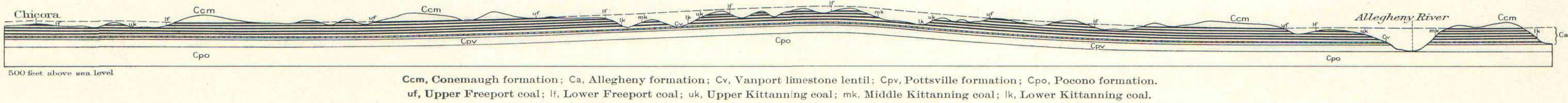


COLUMNAR SECTION

GENERALIZED SECTION FOR THE KITTANNING QUADRANGLE.							
SCALE: 1 INCH = 100 FEET.							
SYSTEM.	SERIES.	FORMATION NAME.	SYMBOL.	COLUMNAR SECTION.	THICKNESS IN FEET.	NAMES OF MEMBERS.	CHARACTER AND DISTRIBUTION OF MEMBERS.
CARBONIFEROUS	PENNSYLVANIAN	Conemaugh formation.	(Cam)		400+	Ames ("Crinoidal") limestone.	Grayish-green, fossiliferous limestone, 2 feet thick. Hills north of Slate Lick.
			Ccm				Red shale. Hills northeast of Slate Lick.
			(Csb)			Saltsburg sandstone.	Coarse, thick-bedded sandstone. Excellent quarry rock. Hills in southwest corner of quadrangle.
						Bakerstown coal.	Thin and worthless. Southwest corner of quadrangle.
						Brush Creek coals.	Red shale.
CARBONIFEROUS	PENNSYLVANIAN	Allegheny formation.	Ca		340-360	Upper Freeport coal.	Generally present and of minable thickness. Thin and poor occasionally.
						Fire clay.	Usually plaster, rarely flint; probably always present under coal.
						Upper Freeport limestone.	Hard blue limestone.
						Upper Freeport sandstone.	Coarse, heavy-bedded sandstone, rarely present.
						Lower Freeport coal.	Generally thin. Valuable seam along Glade Run.
CARBONIFEROUS	PENNSYLVANIAN	Allegheny formation.	Ca		340-360	Lower Freeport limestone.	Thin and rarely present.
						Lower Freeport sandstone.	Generally flaggy and coarse, and heavy-bedded near Fosters Mills.
						Upper Kittanning coal.	Generally thin and worthless; locally thick and valuable.
						Middle Kittanning coal.	Not known to be of minable thickness in the quadrangle.
						Lower Kittanning coal.	Present throughout quadrangle so far as known. The most valuable coal in the area. Underlain by thick, valuable fire clay.
CARBONIFEROUS	PENNSYLVANIAN	Allegheny formation.	Ca		340-360	Kittanning sandstone.	Coarse and heavy bedded.
						Vanport limestone.	Gray fossiliferous limestone, often cut by Kittanning sandstone. Thin seam of iron ore at top.
						Clarion coal.	Generally thin and of little value. Underlain by valuable fire clay.
						Clarion sandstone.	Coarse, massive sandstone, rarely present.
						Craigsville coal.	Local, 3 feet thick or less.
CARBONIFEROUS	PENNSYLVANIAN	Pottsville formation.	Cpv		120-140	Brookville coal.	Thin and worthless.
						Brookville fire clay.	
						Homewood sandstone.	Variable. Often partly replaced by shale; rarely coarse and massive.
						Mercer coals?	Thin and worthless.
						Connoquenessing sandstone.	Coarse, heavy-bedded sandstone with beds of shale. Exposed along Allegheny River and in vicinity of Craigsville.
CARBONIFEROUS	MISSISSIPPIAN	Pocono formation.	Cpo		200+		Heavy-bedded gray sandstone, found along the gorge of the Allegheny River and along Red Bank Creek.

STRUCTURE SECTION ALONG THE LINE A-A ON THE GEOLOGIC MAPS.
HORIZONTAL SCALE: 1 INCH = 1 MILE. VERTICAL SCALE: 1 INCH = 1500 FEET.



CHARLES BUTTS,
Geologist.