



FIG. 3.—RELIEF MAP OF THE NORTHERN APPALACHIAN MOUNTAINS.
The Elders Ridge quadrangle is situated on the plateau west of the belt of valley ridges, in the west-central part of Pennsylvania.

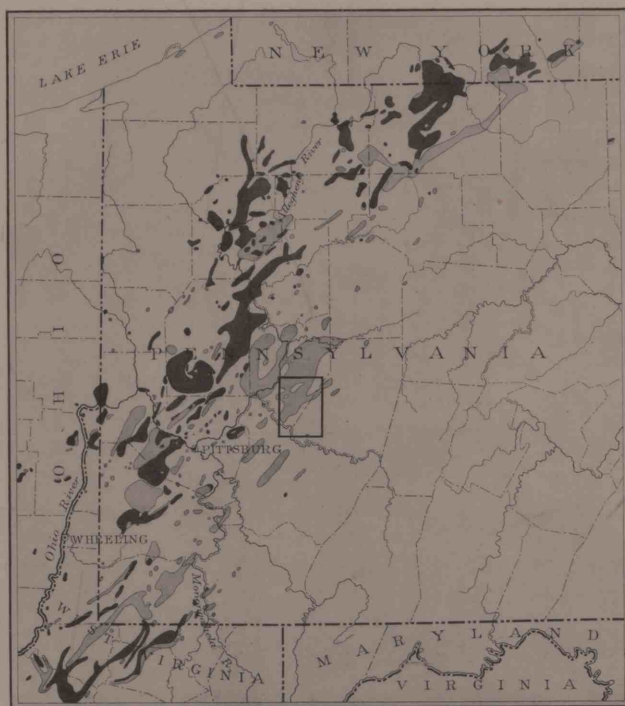


FIG. 4.—MAP SHOWING THE DISTRIBUTION OF THE GAS AND OIL POOLS IN WESTERN PENNSYLVANIA.
Compiled from map by the Second Geological Survey of Pennsylvania, and from maps by the United States Geological Survey. Dark areas, oil; lighter areas, gas. The location of the Elders Ridge quadrangle is shown by the rectangle.

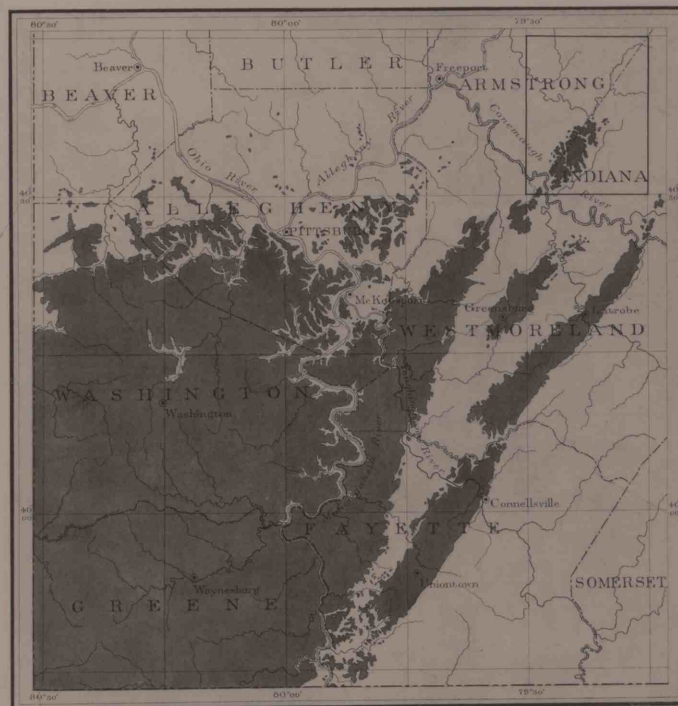


FIG. 5.—MAP SHOWING THE AREA OF THE PITTSBURGH COAL IN PENNSYLVANIA.
The Elders Ridge quadrangle is at the northeastern extremity of the field, as indicated by the rectangle.